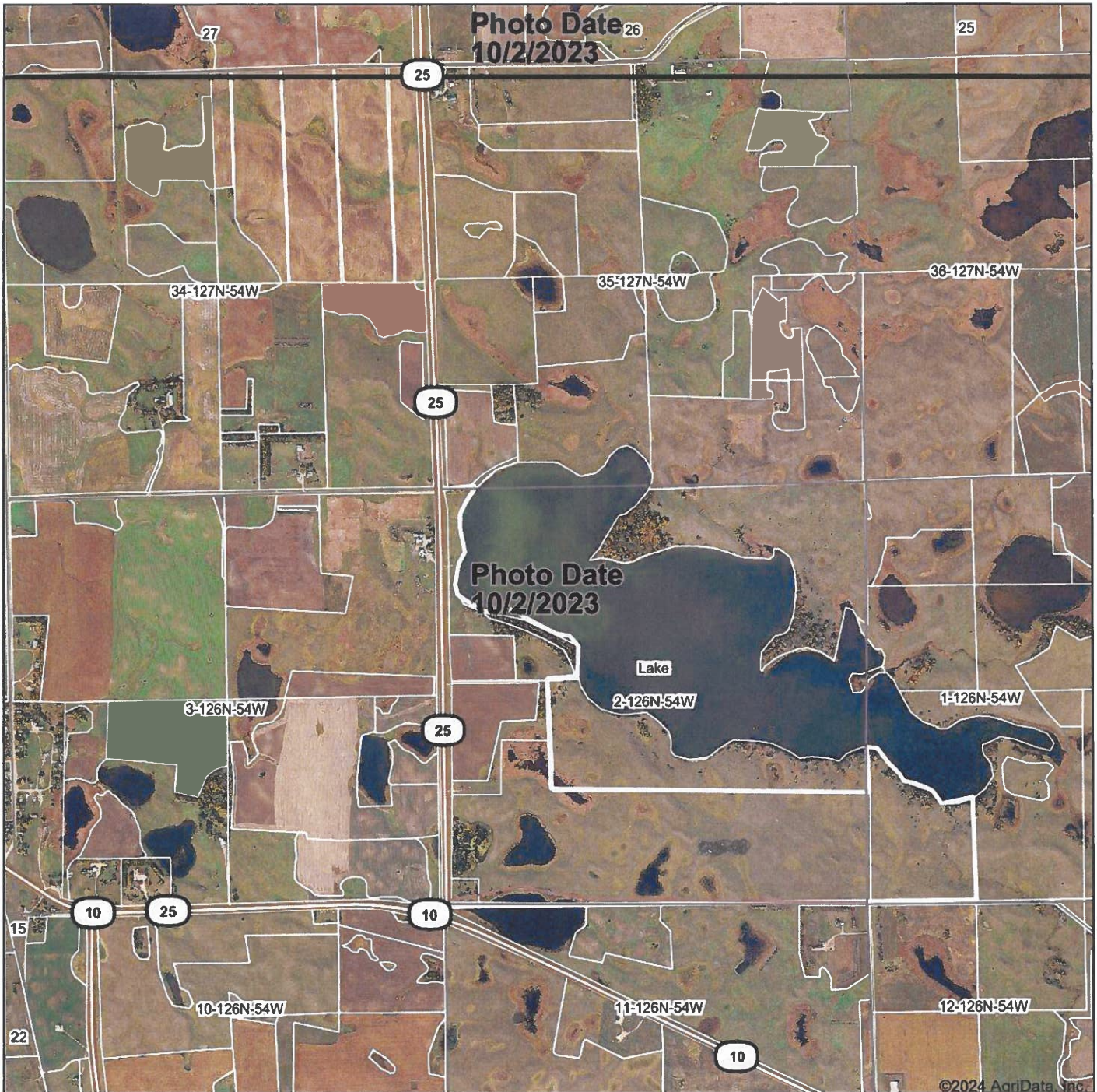


Aerial Map



©2024 AgriData, Inc.

Boundary Center: 45° 43' 33.84, -97° 22' 46.14



2-126N-54W
Marshall County
South Dakota

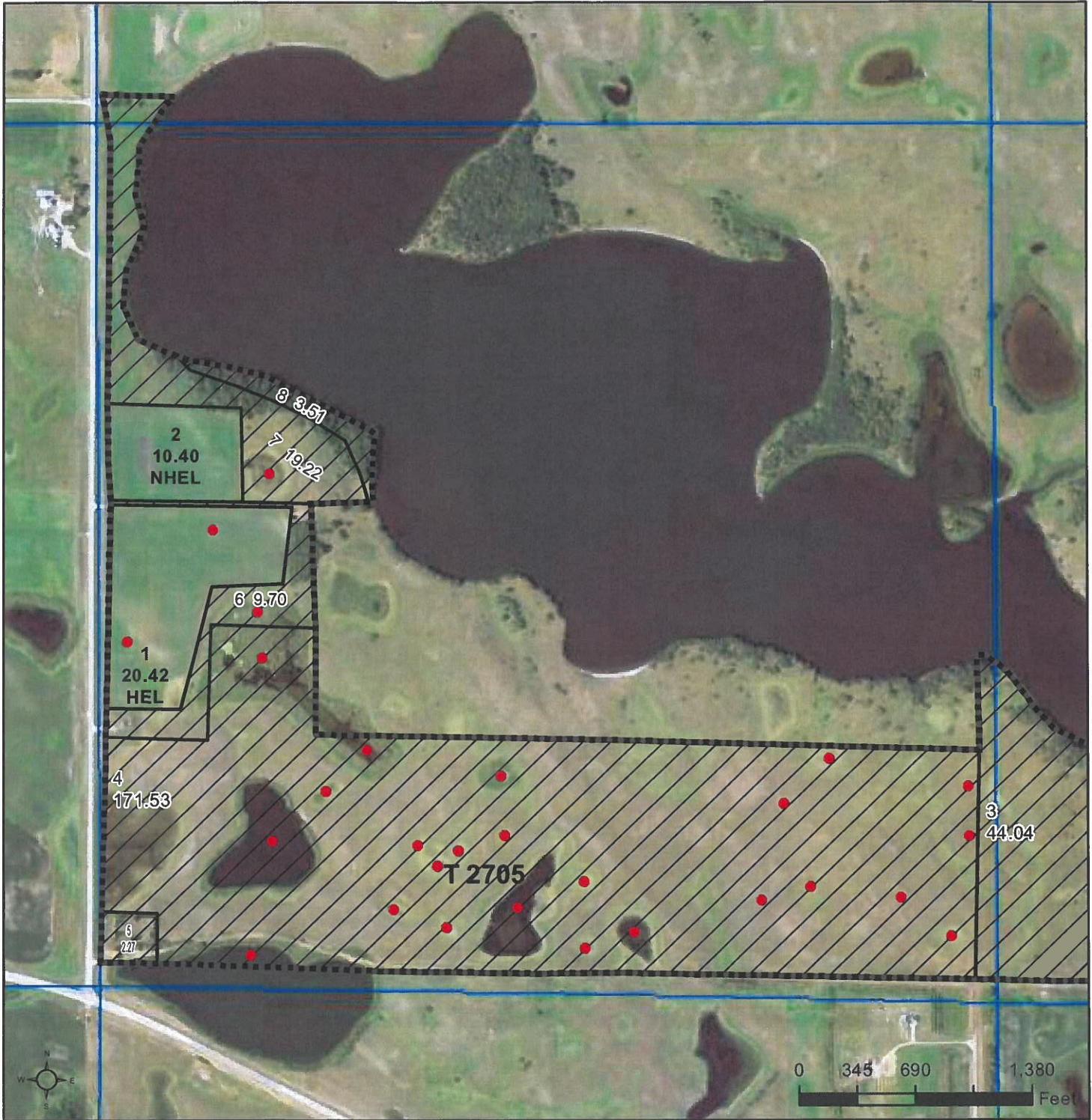


1/29/2024

Maps Provided By:

 CUSTOMIZED ONLINE MAPPING
 © AgriData, Inc. 2023 www.AgriDataInc.com

Field borders provided by Farm Service Agency as of 5/21/2008.



Common Land Unit

- Non-Cropland
- Cropland
- Tract Boundary
- PLSS

Wetland Determination Identifiers

- Restricted Use
- Limited Restrictions
- Exempt from Conservation
- Compliance Provisions

2024 Program Year

Map Created October 05, 2023

Farm 402

2-126N-54W-Marshall

United States Department of Agriculture (USDA) Farm Service Agency (FSA) maps are for FSA Program administration only. This map does not represent a legal survey or reflect actual ownership; rather it depicts the information provided directly from the producer and/or National Agricultural Imagery Program (NAIP) imagery. The producer accepts the data 'as is' and assumes all risks associated with its use. USDA-FSA assumes no responsibility for actual or consequential damage incurred as a result of any user's reliance on this data outside FSA Programs. Wetland identifiers do not represent the size, shape, or specific determination of the area. Refer to your original determination (CPA-026 and attached maps) for exact boundaries and determinations or contact USDA Natural Resources Conservation Service (NRCS).





United States
Department of
Agriculture




Marshall County, South Dakota



Common Land Unit  PLSS

-  Non-Cropland
-  Tract Boundary

Wetland Determination Identifiers

-  Restricted Use
-  Limited Restrictions
-  Exempt from Conservation Compliance Provisions

2024 Program Year

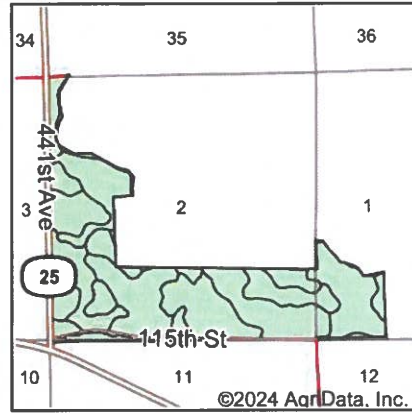
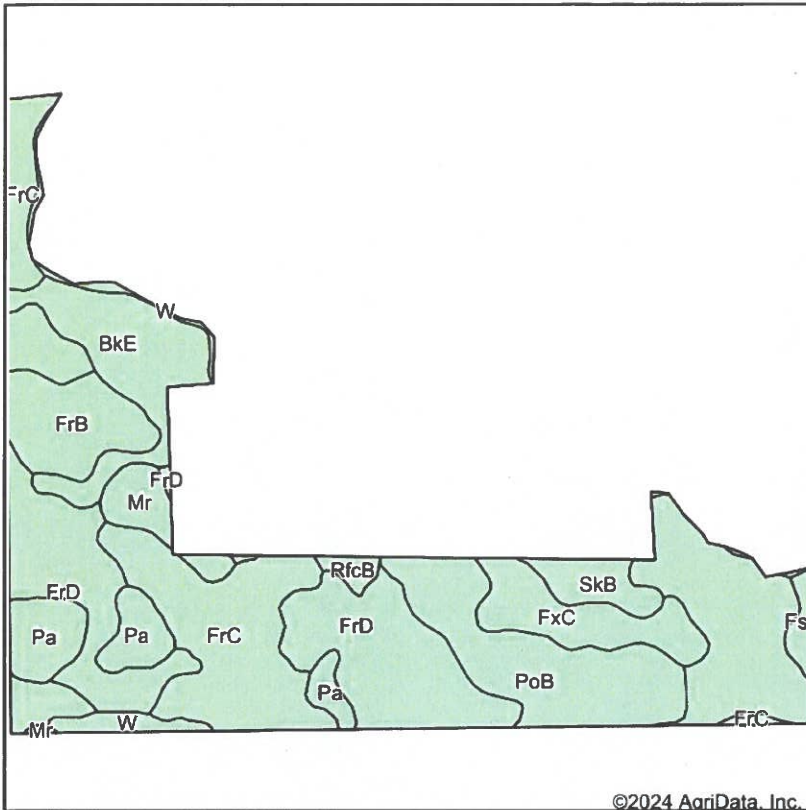
Map Created October 05, 2023

Farm 402

1-126N-54W-Marshall

United States Department of Agriculture (USDA) Farm Service Agency (FSA) maps are for FSA Program administration only. This map does not represent a legal survey or reflect actual ownership; rather it depicts the information provided directly from the producer and/or National Agricultural Imagery Program (NAIP) imagery. The producer accepts the data 'as is' and assumes all risks associated with its use. USDA-FSA assumes no responsibility for actual or consequential damage incurred as a result of any user's reliance on this data outside FSA Programs. Wetland identifiers do not represent the size, shape, or specific determination of the area. Refer to your original determination (CPA-026 and attached maps) for exact boundaries and determinations or contact USDA Natural Resources Conservation Service (NRCS).

Soils Map



State: **South Dakota**
 County: **Marshall**
 Location: **2-126N-54W**
 Township: **Lake**
 Acres:
 Date:



Soils data provided by USDA and NRCS.

©2024 AgriData, Inc.

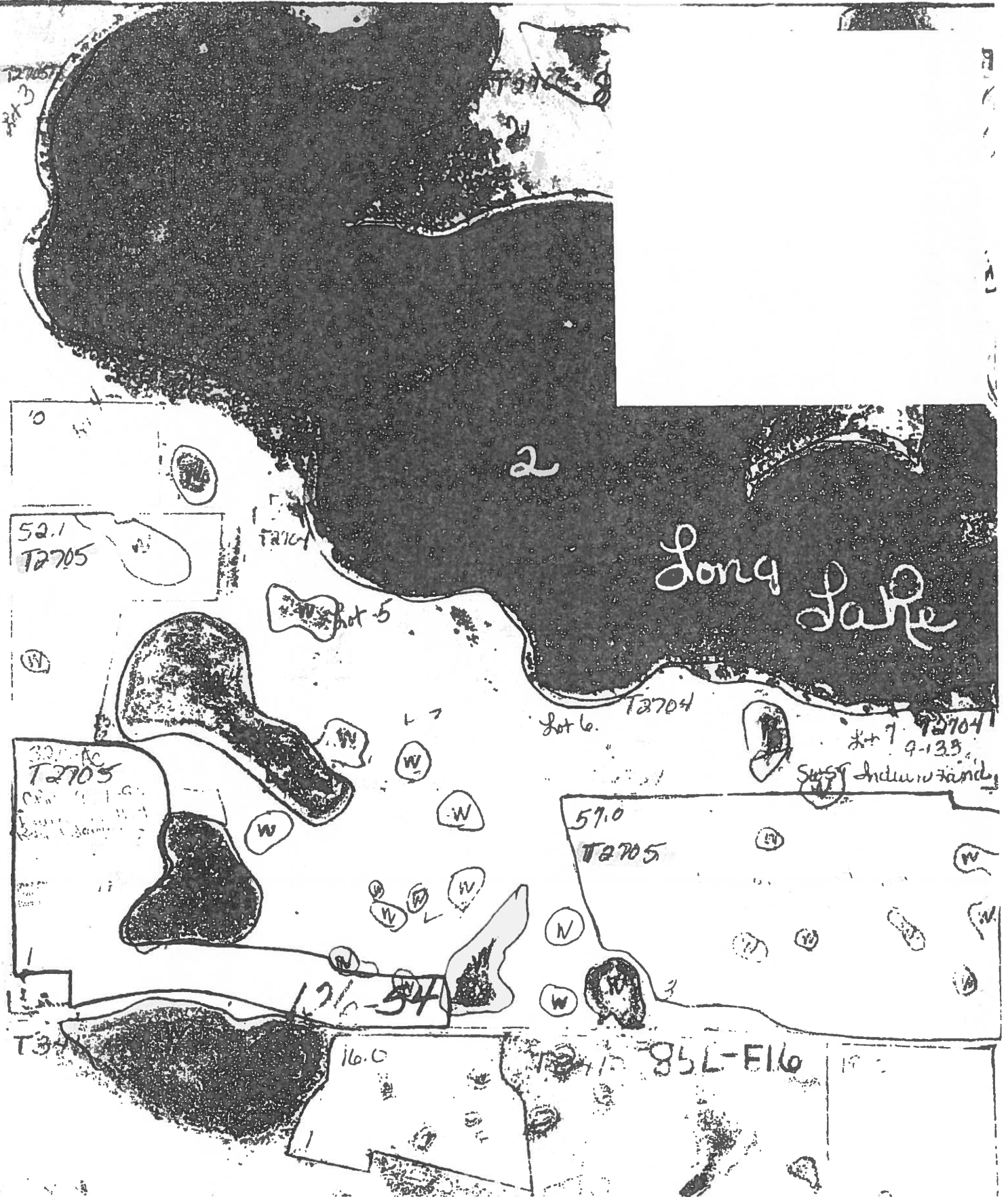
Area Symbol: SD091, Soil Area Version: 24

Code	Soil Description	Acres	Percent of field	Non-Irr Class *c	Productivity Index	Corn Bu	Soybeans Bu	*n NCCPI Soybeans
FrD	Forman-Aastad loams, 9 to 15 percent slopes	93.72	31.5%	IVe	53	49	19	50
FrC	Forman-Aastad loams, 6 to 9 percent slopes	60.49	20.4%	IIIe	67	58	22	54
PoB	Poinsett-Forman complex, 2 to 6 percent slopes	35.26	11.9%	Ile	84	69	26	55
BkE	Buse-Forman loams, 9 to 21 percent slopes	26.21	8.8%	VIe	27	17	6	42
FrB	Forman-Aastad loams, 2 to 6 percent slopes	18.04	6.1%	Ile	81	67	26	54
Pa	Parnell silty clay loam	18.02	6.1%	Vw	30	24	9	6
FxC	Forman-Poinsett complex, 6 to 9 percent slopes	17.40	5.9%	IIIe	64	57	22	51
Mr	Southam silty clay loam, 0 to 1 percent slopes	8.08	2.7%	VIIIw	10			9
SkB	Sinai silty clay, 3 to 6 percent slopes	7.50	2.5%	IIIe	73	60	23	45
W	Water	6.44	2.2%	VIII	0			
FsE	Forman-Buse loams, 15 to 25 percent slopes	3.66	1.2%	VIe	24	19	7	39
RfcB	Renshaw-Fordville loams, coteau, 2 to 6 percent slopes	2.29	0.8%	IVs	43			35
Weighted Average				3.81	55.9	47.6	18.2	*n 45.8

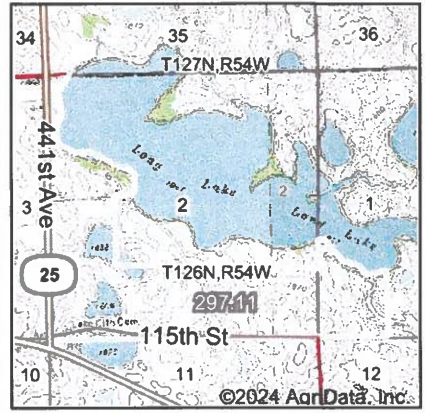
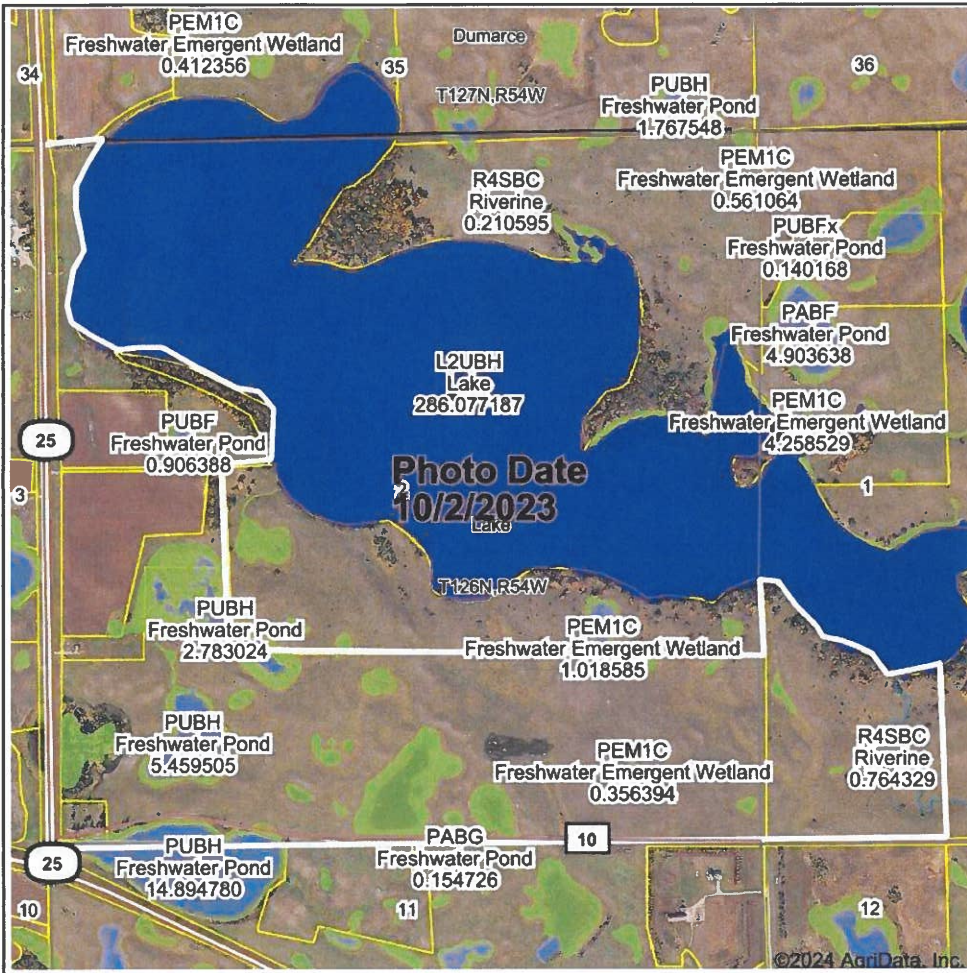
*n: The aggregation method is "Weighted Average using all components"
 *c: Using Capabilities Class Dominant Condition Aggregation Method

Soils data provided by USDA and NRCS.

NOT TO SCALE



Wetlands Map



State: **South Dakota**
 Location: **2-126N-54W**
 County: **Marshall**
 Township: **Lake**
 Date:

Maps Provided By:

 CUSTOMIZED ONLINE MAPPING
 © AgriData, Inc. 2023 www.AgriDataInc.com

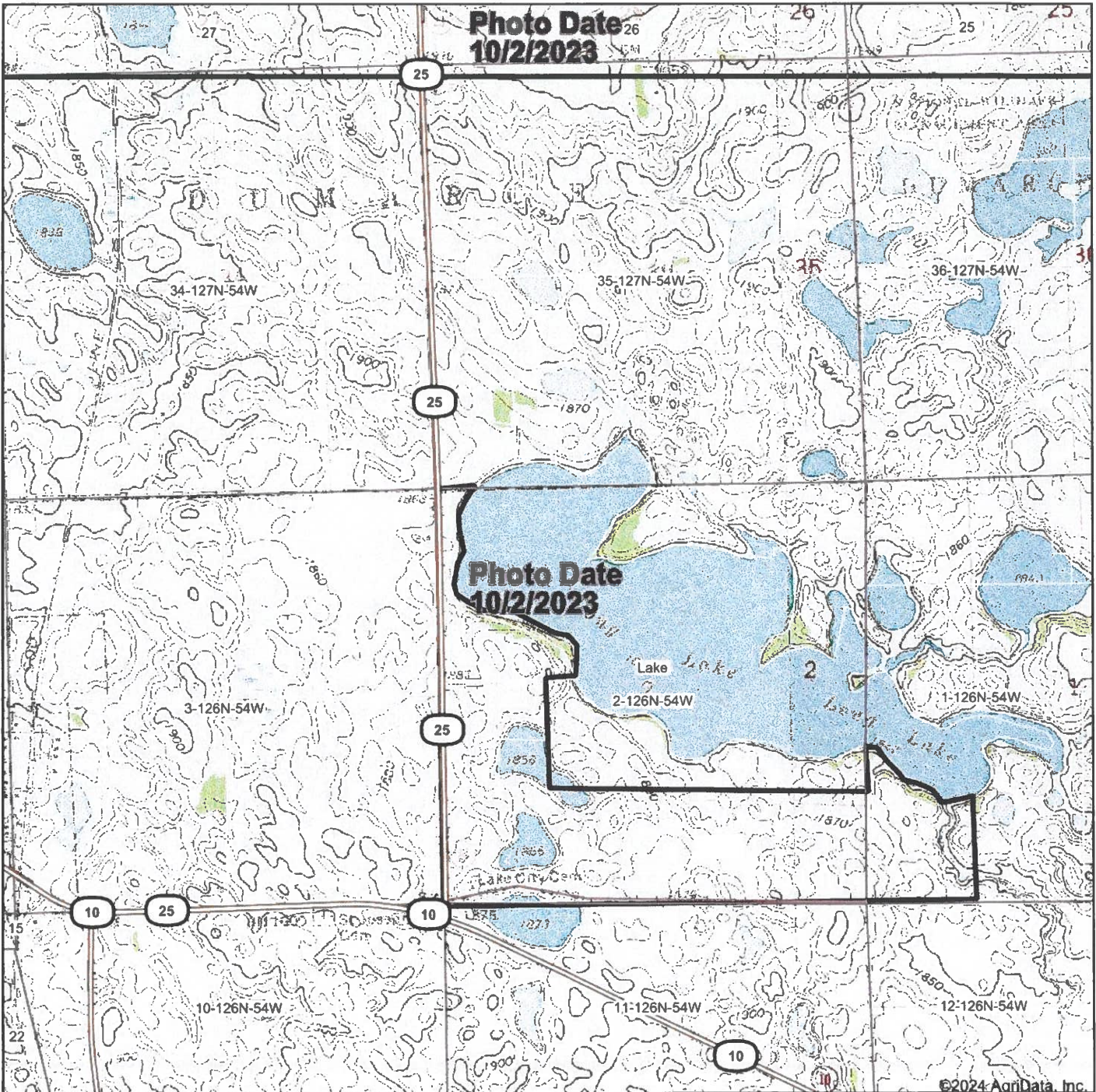


Classification Code	Type	Acres
PEM1F	Freshwater Emergent Wetland	20.30
PUBH	Freshwater Pond	11.10
PEM1C	Freshwater Emergent Wetland	9.33
PEM1A	Freshwater Emergent Wetland	4.73
L2UBH	Lake	2.12
PUBF	Freshwater Pond	0.91
R4SBC	Riverine	0.48
Total Acres		48.97

Data Source: National Wetlands Inventory website. U.S. DoI, Fish and Wildlife Service, Washington, D.C. <http://www.fws.gov/wetlands/>

Field borders provided by Farm Service Agency as of 5/21/2008.

Topography Map



©2024 AgriData, Inc.

Map Center: 45° 43' 51.95, -97° 23' 13.38



2-126N-54W
Marshall County
South Dakota



Maps Provided By:

 CUSTOMIZED ONLINE MAPPING
 © AgriData, Inc. 2023 www.AgriDataInc.com

Field borders provided by Farm Service Agency as of 5/21/2008.