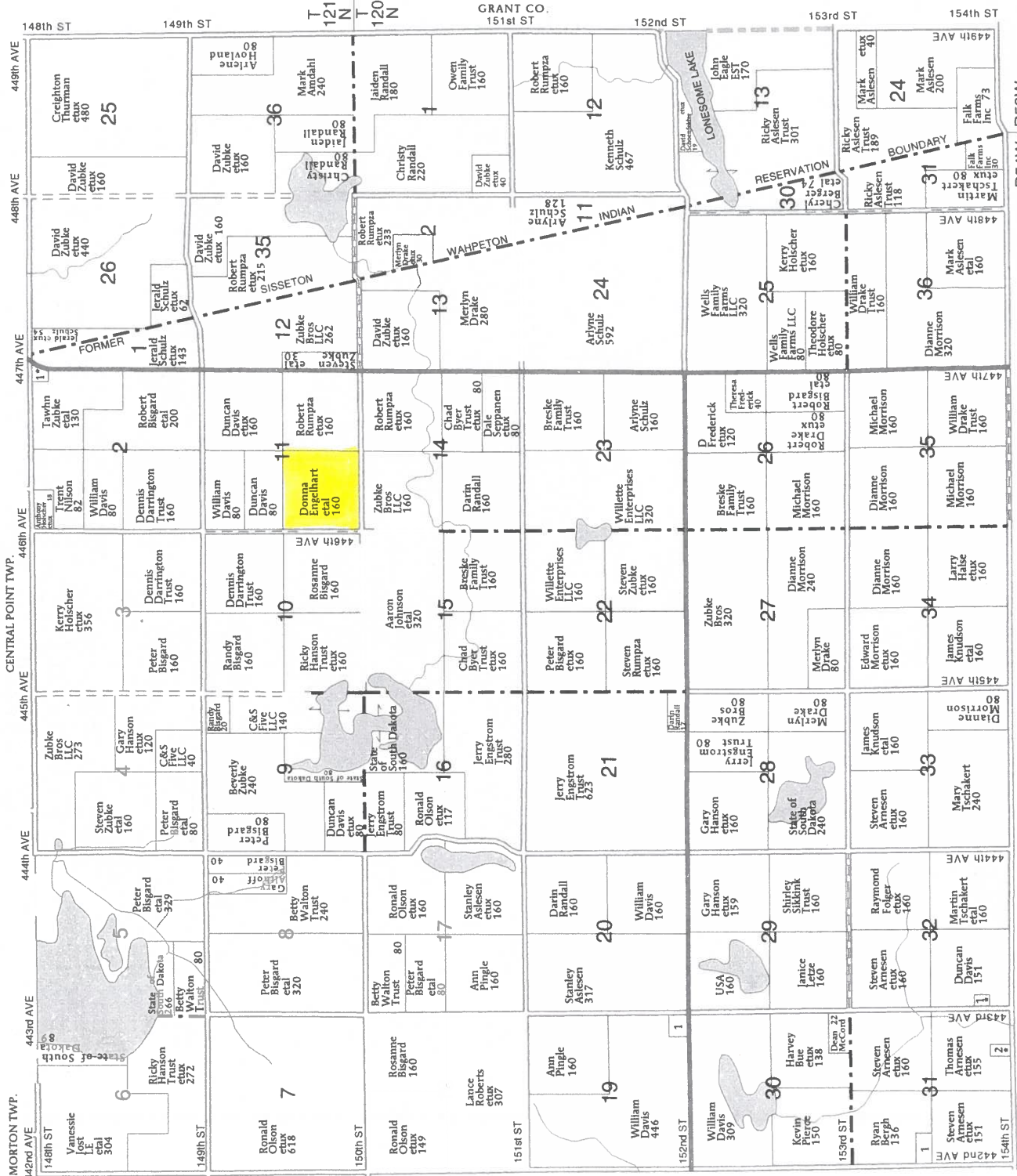


GRANT CO.  
151st ST.

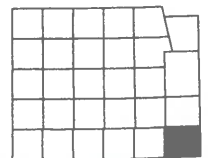


WHEATLAND TWP.

CODINGTON CO.

R54W R53W

SECTION 10	10
SECTION 19	12
SECTION 31W	14
SECTION 5	5
SECTION 32	9



# TRACT 1



**Common Land Unit** Tract Boundary  
 Non-Cropland  
 Cropland

**Wetland Determination Identifiers**

- Restricted Use
- Limited Restrictions
- Exempt from Conservation Compliance Provisions

Unless otherwise noted, crops listed below are:  
 Non-irrigated Intended for Grain  
 Corn = Yellow  
 Soybeans = Common  
 Wheat - HRS or HRW  
 Sunflowers = Oil or Non-oil

Producer initial \_\_\_\_\_  
 Date \_\_\_\_\_

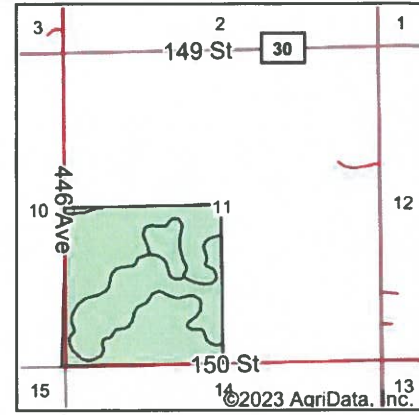
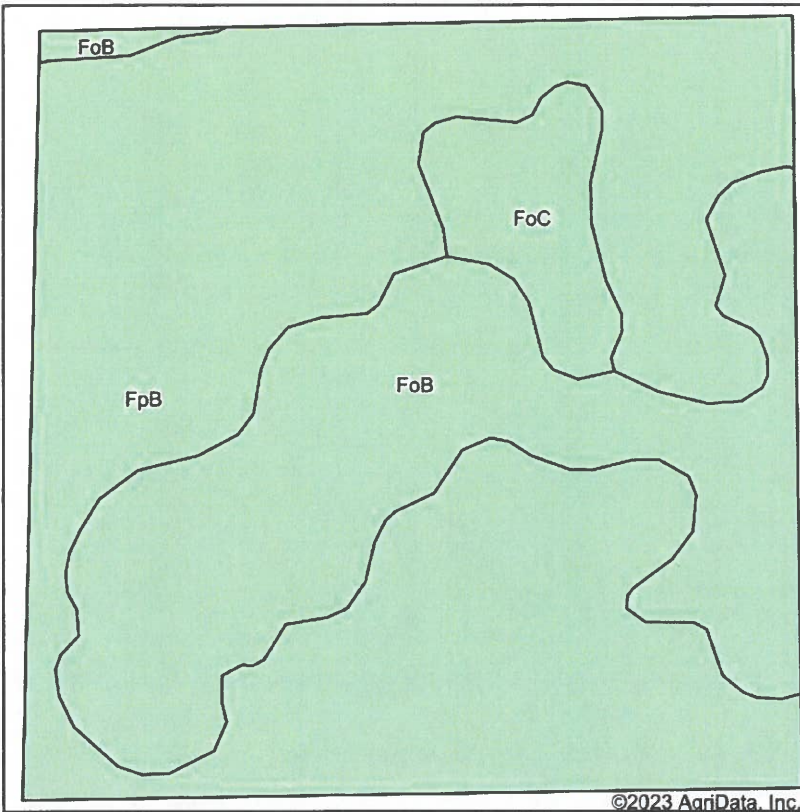
**2023 Program Year**  
 Map Created August 23, 2022  
**Farm 126**

**11-120N-54W-Day**

United States Department of Agriculture (USDA) Farm Service Agency (FSA) maps are for FSA Program administration only. This map does not represent a legal survey or reflect actual ownership; rather it depicts the information provided directly from the producer and/or National Agricultural Imagery Program (NAIP) imagery. The producer accepts the data 'as is' and assumes all risks associated with its use. USDA-FSA assumes Programs. Wetland identifiers do not represent the size, shape, boundaries and determinations or contact USDA Natural Resou

**TRACT 1**

### Soils Map



State: **South Dakota**  
 County: **Day**  
 Location: **11-120N-54W**  
 Township: **Egeland**



Soils data provided by USDA and NRCS.

Area Symbol: SD037, Soil Area Version: 28								
Code	Soil Description	Acres	Percent of field	Non-Irr Class *c	Productivity Index	Corn Bu	Soybeans Bu	*n NCCPI Soybeans
FpB	Forman-Buse-Parnell complex, 0 to 6 percent slopes	102.78	63.1%	Ile	66	52	19	44
FoB	Forman-Buse-Aastad loams, 1 to 6 percent slopes	50.48	31.0%	Ile	79	64	23	54
FoC	Forman-Buse-Aastad loams, 2 to 9 percent slopes	9.54	5.9%	IIle	65	54	20	53
<b>Weighted Average</b>				<b>2.06</b>	<b>70</b>	<b>55.8</b>	<b>20.3</b>	<b>*n 47.6</b>

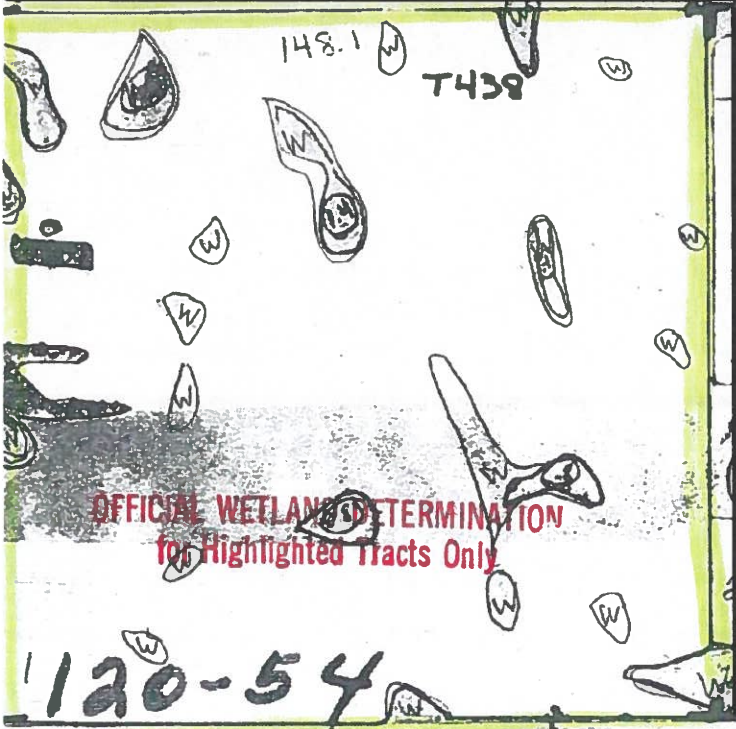
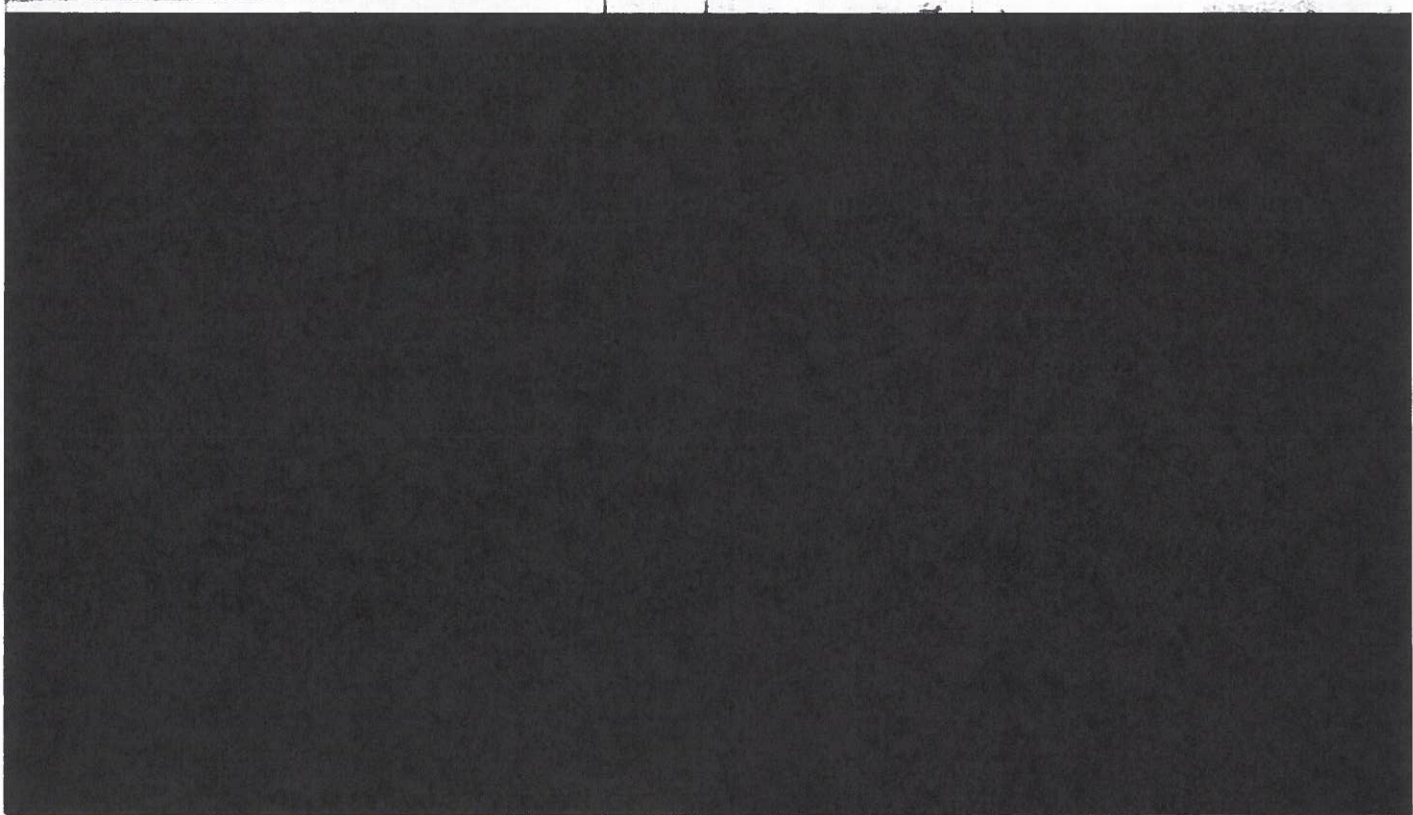
\*n: The aggregation method is "Weighted Average using all components"  
 \*c: Using Capabilities Class Dominant Condition Aggregation Method

Soils data provided by USDA and NRCS.

# TRACT 1

E  
↑

# NOT TO SCALE



TRACT 1

# Aerial Map



Map Center: 45° 13' 0.25, -97° 16' 45.52

0ft 838ft 1676ft

**11-120N-54W**  
**Day County**  
**South Dakota**



Field borders provided by Farm Service Agency as of 5/21/2008.

# TRACT 1

# Topography Contours



©2023 AgriData, Inc.

Source: USGS 3 meter dem  
 Interval(ft): 3.0  
 Min: 1,833.3  
 Max: 1,863.6  
 Range: 30.3  
 Average: 1,849.6  
 Standard Deviation: 6.73 ft



11-120N-54W  
 Day County  
 South Dakota

1/13/2023

Map Center: 45° 13' 0.25, -97° 16' 45.52

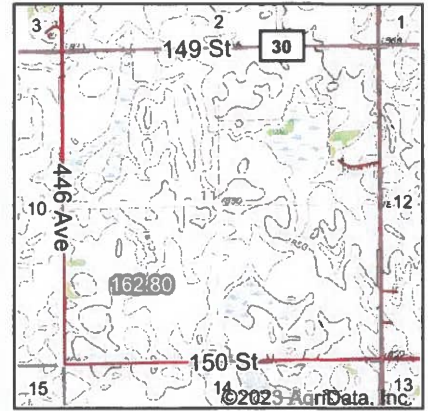


© AgriData, Inc. 2021 www.AgriDataInc.com

Field borders provided by Farm Service Agency as of 5/21/2008.

# TRACT 1

# Wetlands Map



State: **South Dakota**  
 Location: **11-120N-54W**  
 County: **Day**  
 Township: **Egeland**  
 Date: **1/13/2023**

Maps Provided By



© AgnData, Inc. 2021



Classification Code	Type	Acres
PEM1C	Freshwater Emergent Wetland	8.73
PEM1A	Freshwater Emergent Wetland	0.43
<b>Total Acres</b>		<b>9.16</b>

Data Source: National Wetlands Inventory website. U.S. DoI, Fish and Wildlife Service, Washington, D.C. <http://www.fws.gov/wetlands/>

Field borders provided by Farm Service Agency as of 5/21/2008.

# TRACT 1