





United States  
Department of  
Agriculture

# Day County, South Dakota



**Common Land Unit** Tract Boundary  
 Non-Cropland  
 Cropland  
 PLSS

**Wetland Determination Identifiers**

- Restricted Use
- Limited Restrictions
- Exempt from Conservation
- Compliance Provisions

Unless otherwise noted, crops listed below are:  
 Non-irrigated Intended for Grain  
 Corn = Yellow  
 Soybeans = Common  
 Wheat - HRS or HRW  
 Sunflowers = Oil or Non-oil

Producer initial \_\_\_\_\_  
 Date \_\_\_\_\_

2023 Program Year

Map Created August 23, 2022

**Farm 4207**

**5-121N-54W-Day**

United States Department of Agriculture (USDA) Farm Service Agency (FSA) maps are for FSA Program administration only. This map does not represent a legal survey or reflect actual ownership; rather it depicts the information provided directly from the producer and/or National Agricultural Imagery Program (NAIP) imagery. The producer accepts the data 'as is' and assumes all risks associated with its use. USDA-FSA assumes no responsibility for any errors or omissions on this data outside FSA Programs. Wetland identifiers do not represent the size, shape, or location of wetlands or boundaries and determinations or contact USDA Natural Resources Service for more information.

# TRACT 2



**Common Land Unit** Tract Boundary  
 Non-Cropland  
 Cropland  
 PLSS

**Wetland Determination Identifiers**

- Restricted Use
- Limited Restrictions
- Exempt from Conservation
- Compliance Provisions

Unless otherwise noted, crops listed below are:  
 Non-irrigated Intended for Grain  
 Corn = Yellow  
 Soybeans = Common  
 Wheat - HRS or HRW  
 Sunflowers = Oil or Non-oil

Producer initial \_\_\_\_\_  
 Date \_\_\_\_\_

2023 Program Year

Map Created August 23, 2022

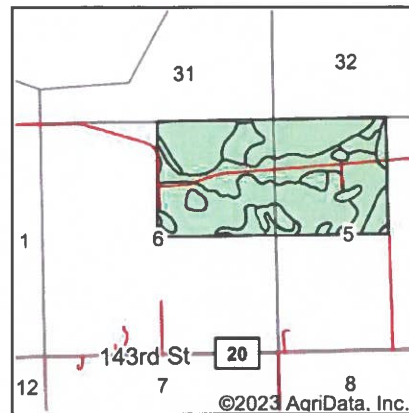
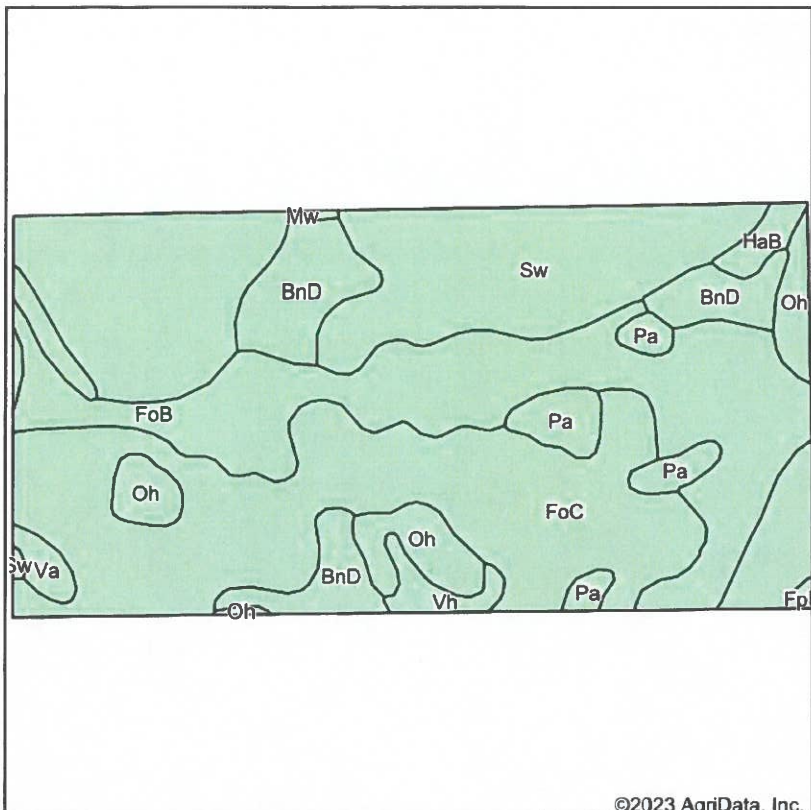
Farm 4207

6-121N-54W-Day

United States Department of Agriculture (USDA) Farm Service Agency (FSA) maps are for FSA Program administration only. This map does not represent a legal survey or reflect actual ownership; rather it depicts the information provided directly from the producer and/or National Agricultural Imagery Program (NAIP) imagery. The producer accepts the data 'as is' and assumes all risks associated with its use. USDA-FSA assumes no liability for any reliance on this data outside FSA Programs. Wetland identifiers do not represent the size, shape, or boundaries and determinations or contact USDA Natural Resources (attached maps) for exact

TRACT 2

### Soils Map



State: **South Dakota**  
 County: **Day**  
 Location: **5-121N-54W**  
 Township: **Central Point**

Maps Provided By



Soils data provided by USDA and NRCS.

©2023 AgriData, Inc.

Area Symbol: SD037, Soil Area Version: 28

Code	Soil Description	Acres	Percent of field	Non-Irr Class *c	Productivity Index	Corn Bu	Soybeans Bu	*n NCCPI Soybeans
FoC	Forman-Buse-Aastad loams, 2 to 9 percent slopes	97.10	30.9%	IIIe	65	54	20	53
Sw	Southam silty clay loam, 0 to 1 percent slopes	81.19	25.8%	VIIIw	10			9
FoB	Forman-Buse-Aastad loams, 1 to 6 percent slopes	70.26	22.3%	Ile	79	64	23	54
BnD	Buse-Barnes loams, 9 to 20 percent slopes	25.86	8.2%	VIe	34	33	12	48
Oh	Oldham silty clay loam	15.63	5.0%	Vw	30	25	8	21
Pa	Parnell silty clay loam	10.50	3.3%	Vw	34	25	9	8
Va	Vallers loam, saline	6.09	1.9%	IVw	30	23	6	26
Vh	Vallers-Hamerly loams	3.82	1.2%	IVw	57	50	16	55
HaB	Hamerly loam, 2 to 6 percent slopes	3.13	1.0%	IIIs	65	60	19	50
FpB	Forman-Buse-Parnell complex, 0 to 6 percent slopes	0.63	0.2%	Ile	66	52	19	44
Mw	Minnewaukan loamy sand	0.42	0.1%	IVw	40	36	14	6
<b>Weighted Average</b>				<b>4.50</b>	<b>47.8</b>	<b>37.5</b>	<b>13.5</b>	<b>*n 37.8</b>

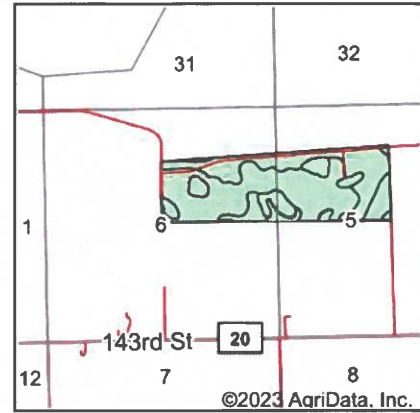
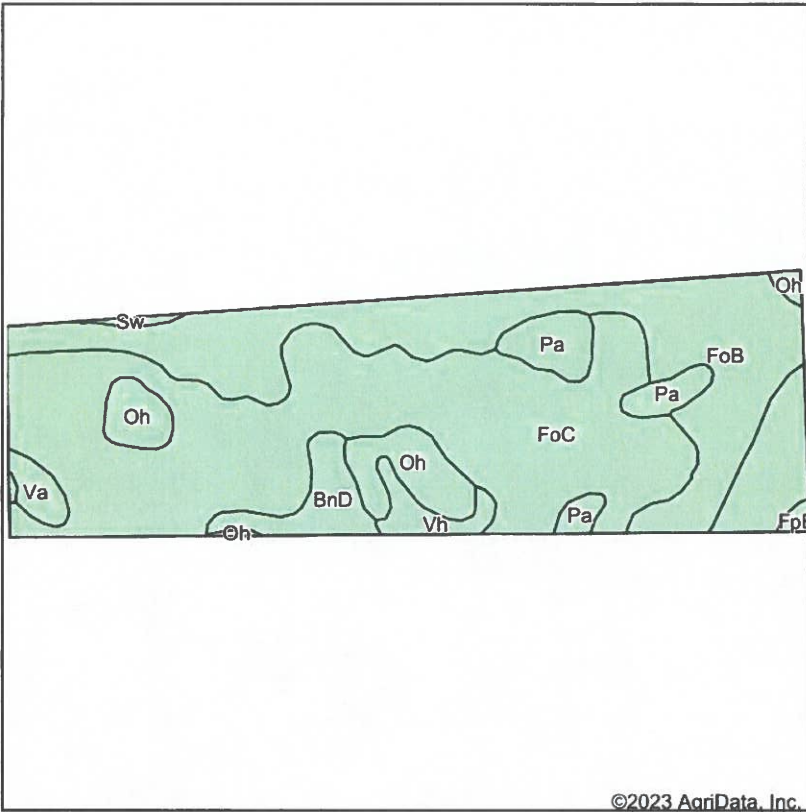
\*n: The aggregation method is "Weighted Average using all components"

\*c: Using Capabilities Class Dominant Condition Aggregation Method

Soils data provided by USDA and NRCS.

# TRACT 2

### Soils Map



State: **South Dakota**  
 County: **Day**  
 Location: **5-121N-54W**  
 Township: **Central Point**



Soils data provided by USDA and NRCS.

©2023 AgriData, Inc.

Area Symbol: SD037, Soil Area Version: 28

Code	Soil Description	Acres	Percent of field	Non-Irr Class *c	Productivity Index	Corn Bu	Soybeans Bu	*n NCCPI Soybeans
FoC	Forman-Buse-Aastad loams, 2 to 9 percent slopes	96.25	52.2%	IIIe	65	54	20	53
FoB	Forman-Buse-Aastad loams, 1 to 6 percent slopes	52.62	28.5%	Ile	79	64	23	54
Oh	Oldham silty clay loam	12.07	6.5%	Vw	30	25	8	21
Pa	Parnell silty clay loam	8.73	4.7%	Vw	34	25	9	8
BnD	Buse-Barnes loams, 9 to 20 percent slopes	6.89	3.7%	VIe	34	33	12	48
Vh	Vallers-Hamerly loams	3.69	2.0%	IVw	57	50	16	55
Va	Vallers loam, saline	2.68	1.5%	IVw	30	23	6	26
Sw	Southam silty clay loam, 0 to 1 percent slopes	0.82	0.4%	VIIIw	10			9
FpB	Forman-Buse-Parnell complex, 0 to 6 percent slopes	0.72	0.4%	Ile	66	52	19	44
<b>Weighted Average</b>				<b>3.11</b>	<b>63.2</b>	<b>52</b>	<b>18.9</b>	<b>*n 48.3</b>

\*n: The aggregation method is "Weighted Average using all components"  
 \*c: Using Capabilities Class Dominant Condition Aggregation Method

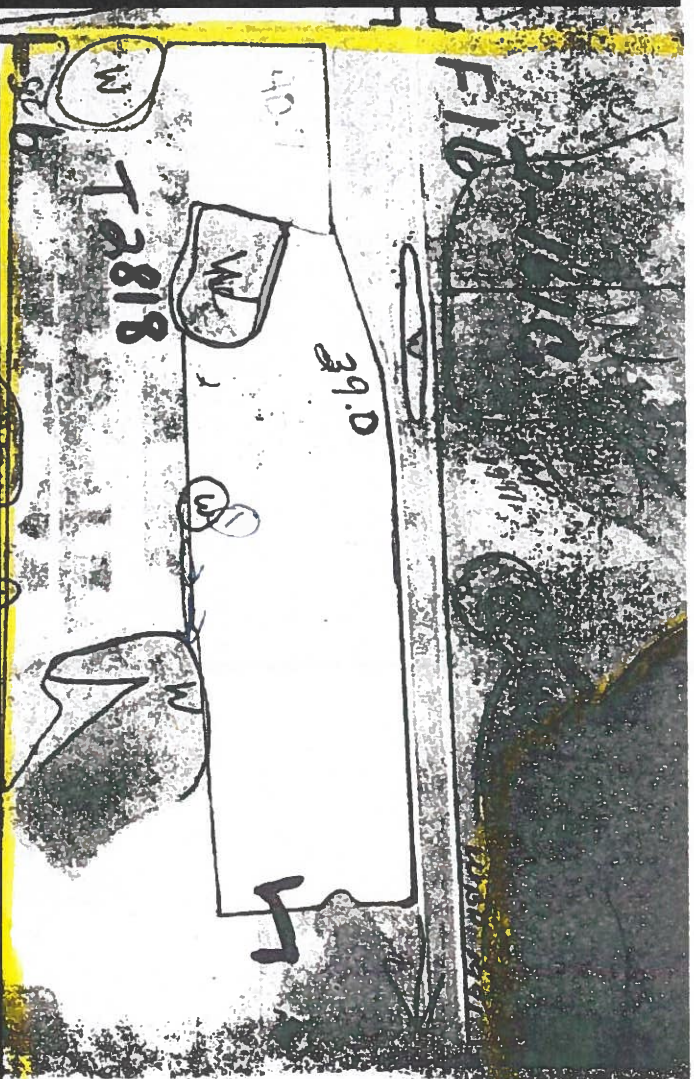
Soils data provided by USDA and NRCS.

# TRACT 2

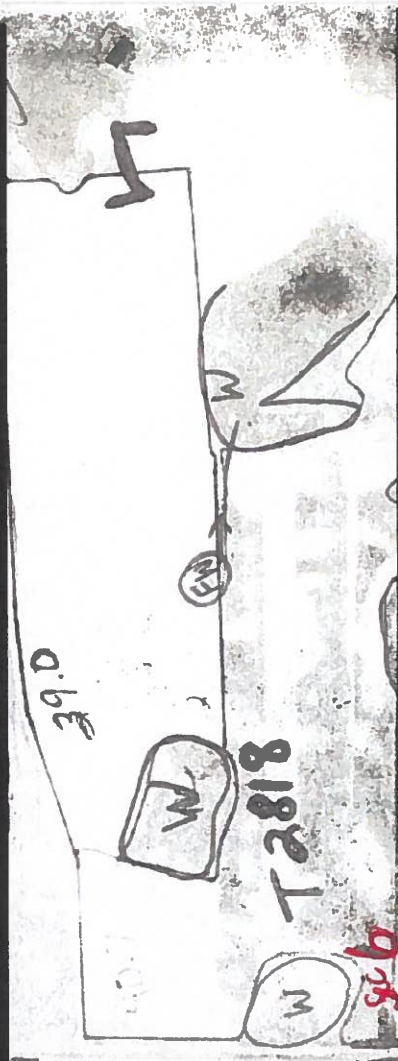
NOT TO SCALE



TRACT 2



TRACT 2



8 ← ↓

TRACT 2

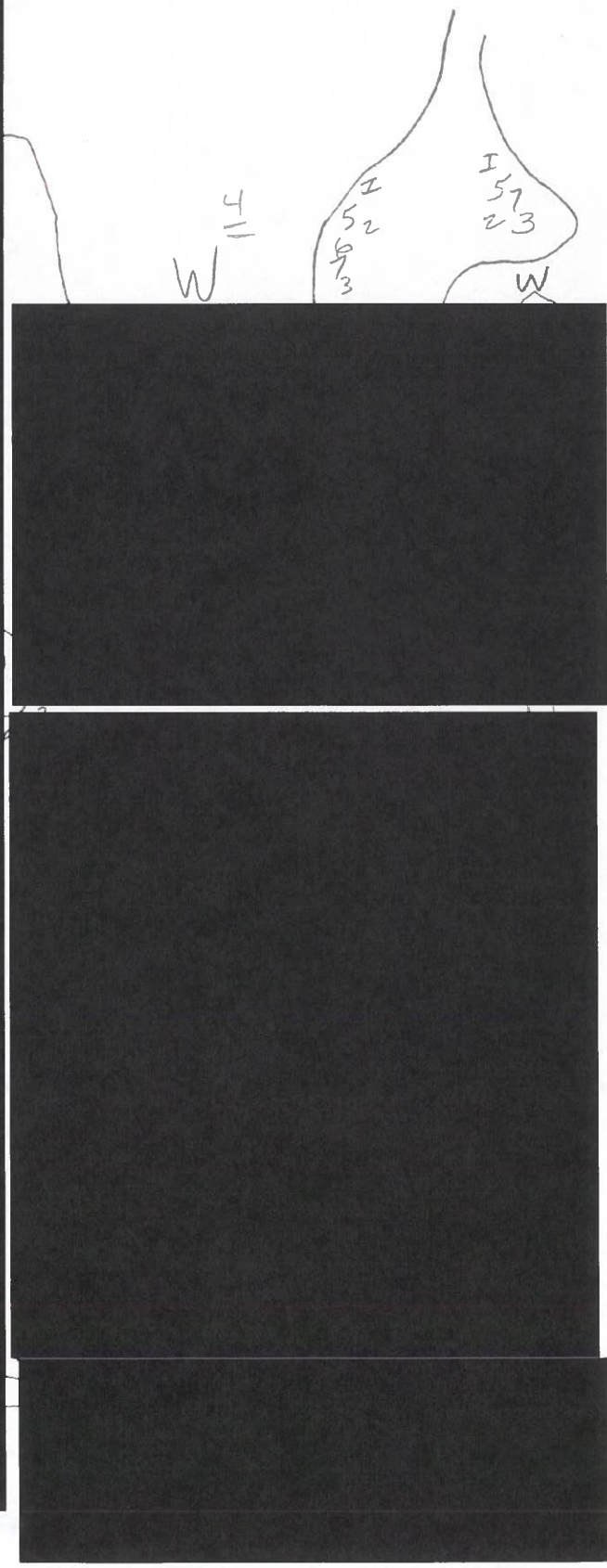
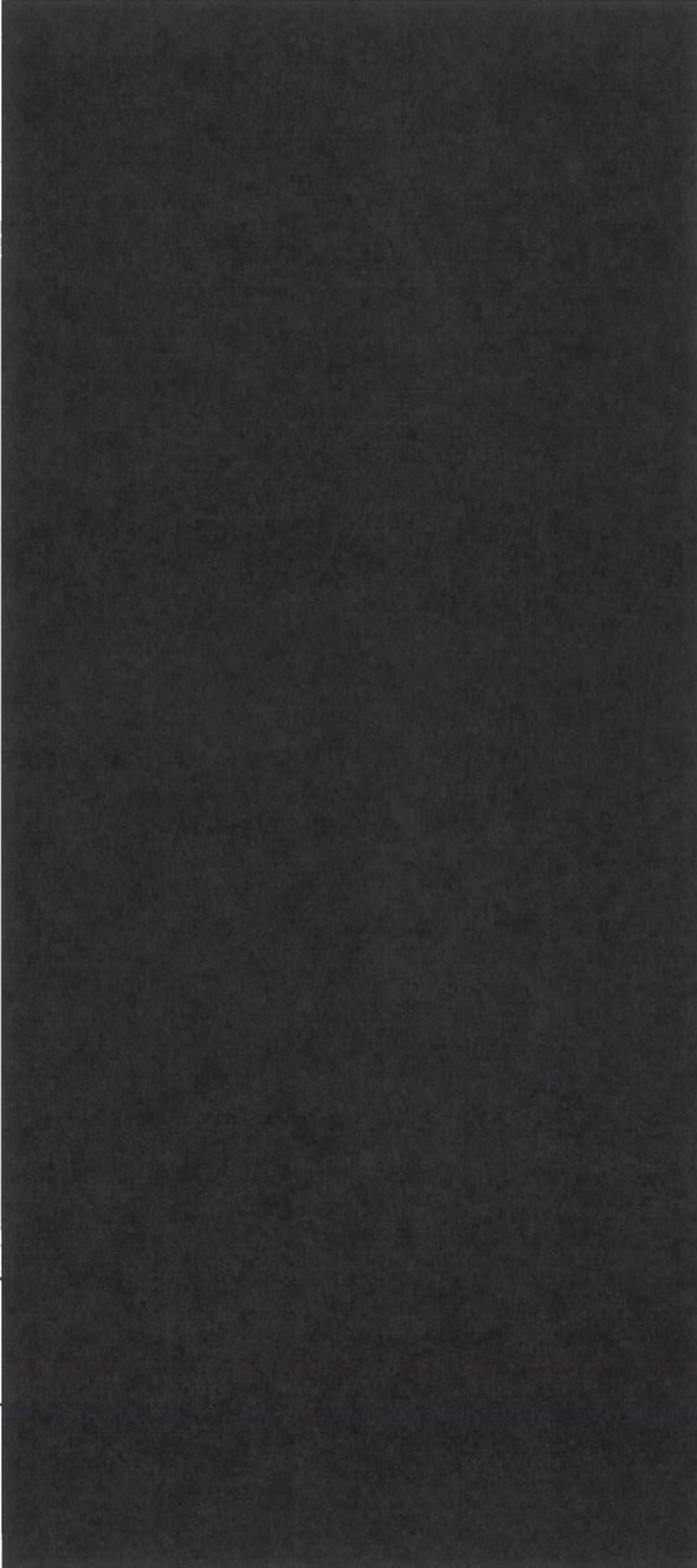
CP



WETLAND INVENTORY WORKSHEET

Section 6 Twp 121 Range 54  
County, South Dakota  
Date DAY  
Base Year 1984

Name Dee Watson  
Leader: Office ck \_\_\_\_\_ Field ck \_\_\_\_\_  
SpCk \_\_\_\_\_ Date \_\_\_\_\_  
Office check \_\_\_\_\_ Field check \_\_\_\_\_



# Aerial Map



Map Center: 45° 19' 25.3, -97° 20' 43.59



**5-121N-54W**  
**Day County**  
**South Dakota**

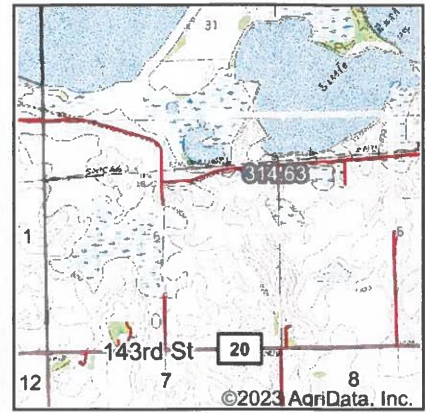


Maps Provided By:  
  
 CUSTOMIZED ONLINE MAPPING  
 © AgriData, Inc. 2021 www.AgriDataInc.com

Field borders provided by Farm Service Agency as of 5/21/2008.

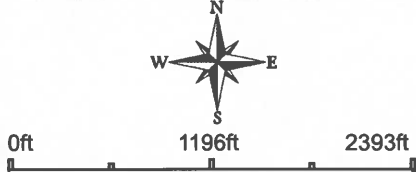
# TRACT 2

# Wetlands Map



State: **South Dakota**  
 Location: **5-121N-54W**  
 County: **Day**  
 Township: **Central Point**  
 Date: **1/13/2023**

Maps Provided By  
  
 CUSTOMIZED ONLINE MAPPING  
 © AgriData, Inc. 2021 www.AgrDataInc.com



Classification Code	Type	Acres
L2UBH	Lake	104.48
PUBH	Freshwater Pond	24.84
PEM1C	Freshwater Emergent Wetland	22.56
PEM1F	Freshwater Emergent Wetland	15.50
PEM1A	Freshwater Emergent Wetland	0.82
PUBF	Freshwater Pond	0.60
<b>Total Acres</b>		<b>168.80</b>

Data Source: National Wetlands Inventory website. U.S. DoI, Fish and Wildlife Service, Washington, D.C. <http://www.fws.gov/wetlands/>

Field borders provided by Farm Service Agency as of 5/21/2008.

## TRACT 2

# Topography Contours



©2023 AgriData, Inc.

Source: USGS 3 meter dem  
 Interval(ft): 4.0  
 Min: 1,799.1  
 Max: 1,836.3  
 Range: 37.2  
 Average: 1,807.3  
 Standard Deviation: 6.1 ft



5-121N-54W  
 Day County  
 South Dakota

Map Center: 45° 19' 25.3, -97° 20' 43.59

Maps Provided By  
  
 CUSTOMIZED ONLINE MAPPING  
 © AgriData, Inc. 2021 www.AgridataInc.com  
 Field borders provided by Farm Service Agency as of 5/21/2008.

## TRACT 2