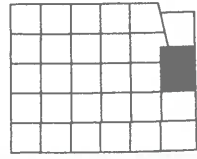


WAUBAY TOWNSHIP	
SECTION 5S	
1 ZUBKE, GARY ETAL	15
SECTION 9N	
1 DARGATZ, BRIAN	10
SECTION 9W	
1 ZUBKE, DONALD ETUX	11

SECTION 10N	
1 IYAYURMANIWIN	30
SECTION 16S	
1 ZUBKE, GARY	12
SECTION 21S	
1 NILSON, TRACY ETAL	8

SECTION 22S	
1 ENEMY SWIM DISTRICT SISSETON WAHPETON OYATE	10
SECTION 32S	
1 LAKEWOOD CEMETERY	6
SECTION 33S	
1 WE	

# TRACT 3







**Common Land Unit** Tract Boundary  
 PLSS  
 Non-Cropland  
 Cropland

**Wetland Determination Identifiers**  
 Restricted Use  
 Limited Restrictions  
 Exempt from Conservation Compliance Provisions

Unless otherwise noted, crops listed below are:  
 Non-irrigated Intended for Grain  
 Corn = Yellow  
 Soybeans = Common  
 Wheat - HRS or HRW  
 Sunflowers = Oil or Non-oil

Producer initial \_\_\_\_\_  
 Date \_\_\_\_\_

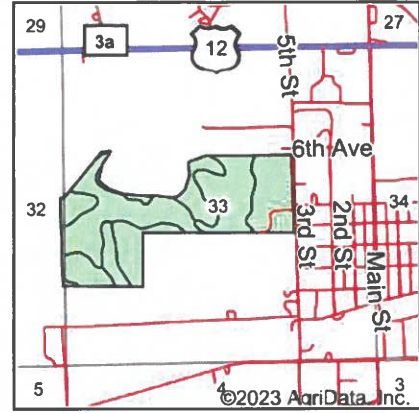
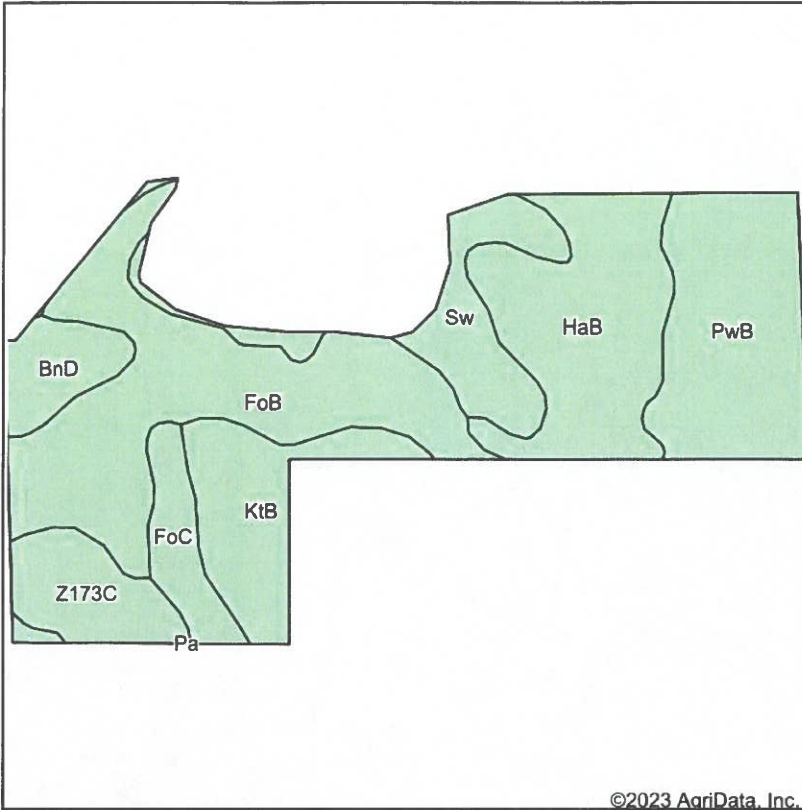
**2023 Program Year**  
 Map Created August 23, 2022  
**Farm 4207**

**33-122N-54W-Day**

United States Department of Agriculture (USDA) Farm Service Agency (FSA) maps are for FSA Program administration only. This map does not represent a legal survey or reflect actual ownership; rather it depicts the information provided directly from the producer and/or National Agricultural Imagery Program (NAIP) imagery. The producer accepts the data 'as is' and assumes all risks associated with its use. USDA-FSA assumes no responsibility for actual or consequential damage incurred as a result of any user's reliance on this data outside FSA Programs. Wetland identifiers do not represent the size, shape, or boundaries and determinations or contact USDA Natural Resource:

**TRACT 3**

### Soils Map



State: **South Dakota**  
 County: **Day**  
 Location: **33-122N-54W**  
 Township: **Waubay**



Soils data provided by USDA and NRCS.

©2023 AgriData, Inc.

Area Symbol: SD037, Soil Area Version: 28								
Code	Soil Description	Acres	Percent of field	Non-Irr Class *c	Productivity Index	Corn Bu	Soybeans Bu	*n NCCPI Soybeans
FoB	Forman-Buse-Aastad loams, 1 to 6 percent slopes	32.84	27.9%	Ile	79	64	23	54
HaB	Hamerly loam, 2 to 6 percent slopes	21.84	18.6%	IIs	65	60	19	50
PwB	Poinsett-Waubay silty clay loams, 1 to 6 percent slopes	20.71	17.6%	Ile	89			73
KtB	Kranzburg-Forman complex, 2 to 6 percent slopes	12.05	10.2%	Ile	83	68	26	59
Sw	Southam silty clay loam, 0 to 1 percent slopes	11.26	9.6%	VIIIw	10			9
Z173C	Renshaw-Sioux complex, coteau, 6 to 9 percent slopes	7.90	6.7%	IVe	28			27
FoC	Forman-Buse-Aastad loams, 2 to 9 percent slopes	5.61	4.8%	IIIe	65	54	20	53
BnD	Buse-Barnes loams, 9 to 20 percent slopes	5.45	4.6%	VIe	34	33	12	48
<b>Weighted Average</b>				<b>2.94</b>	<b>65.8</b>	<b>40.1</b>	<b>14.1</b>	<b>*n 50.7</b>

\*n: The aggregation method is "Weighted Average using all components"

\*c: Using Capabilities Class Dominant Condition Aggregation Method

Soils data provided by USDA and NRCS.

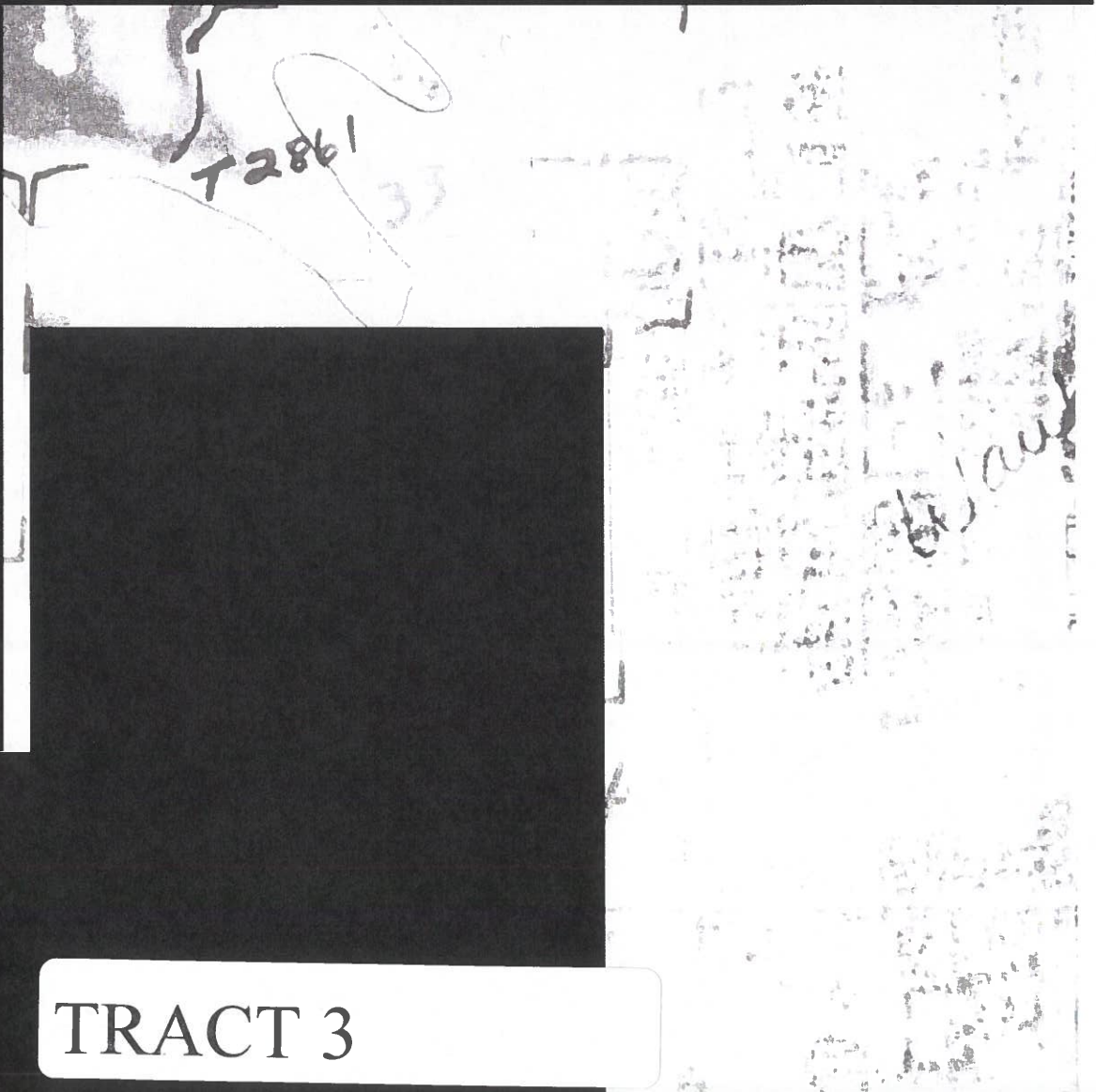
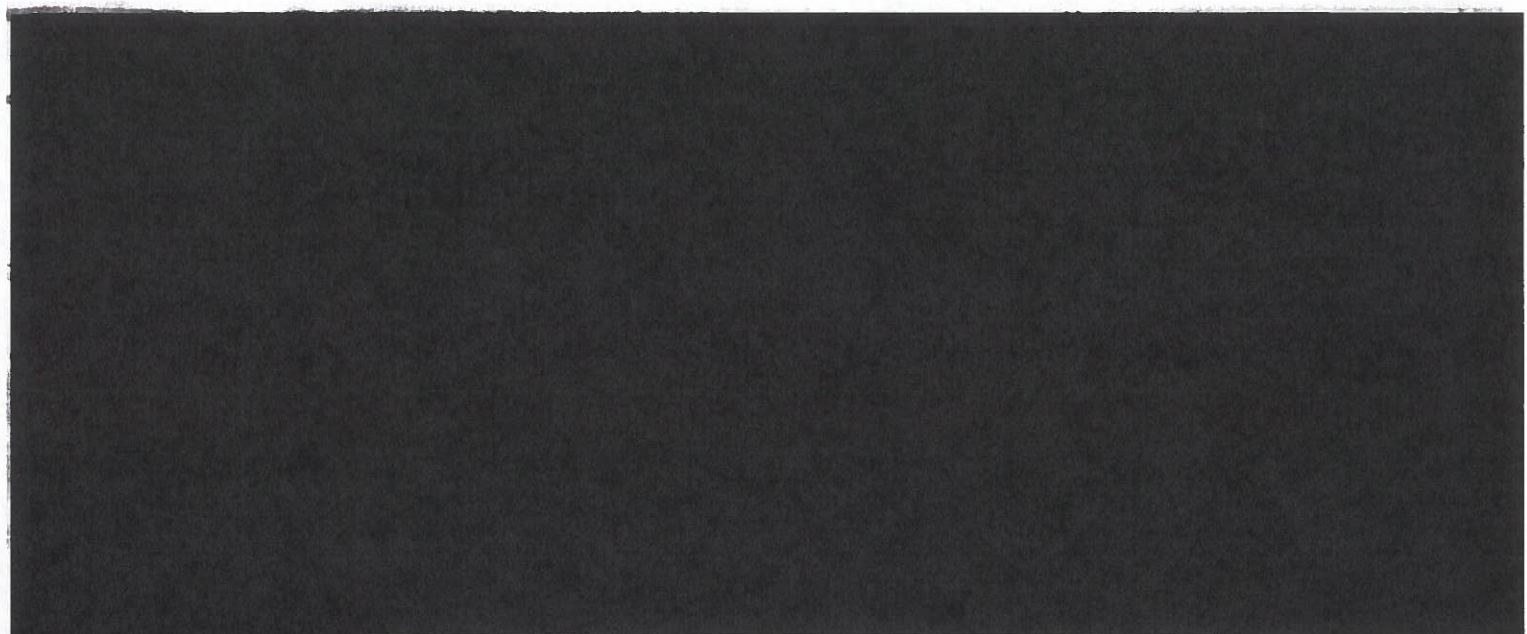
# TRACT 3



Waubay

59

# NOT TO SCALE

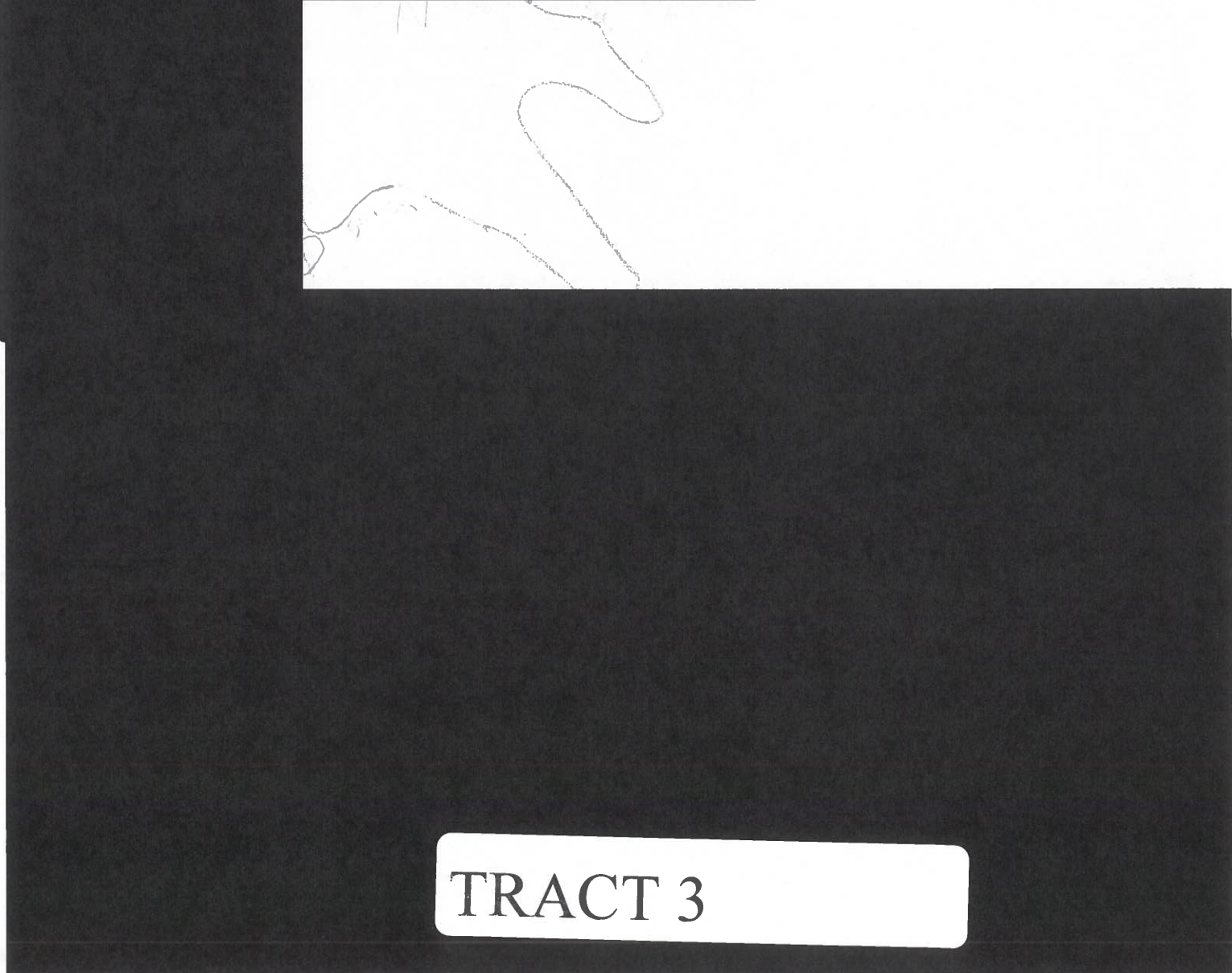
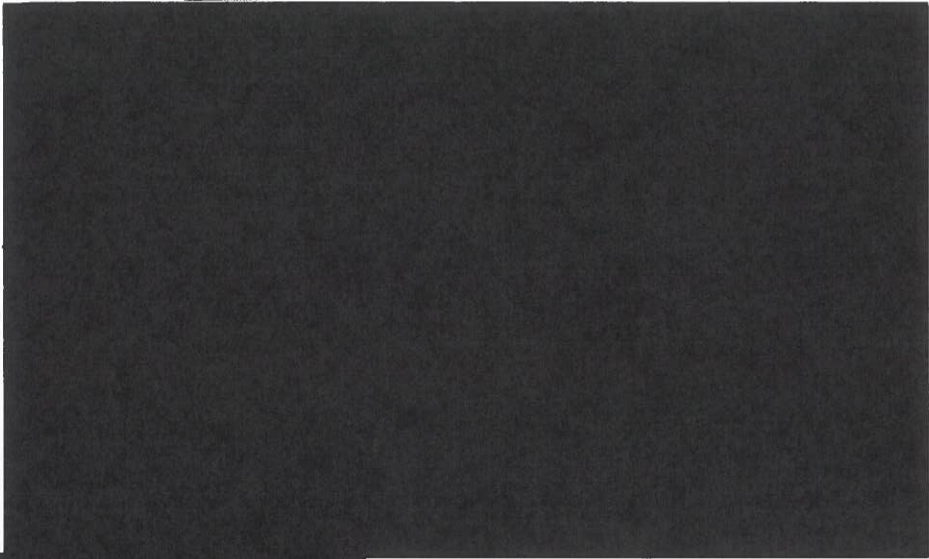


TRACT 3

WETLAND INVENTORY WORKSHEET

Section 36 Twp 122 Rge 54  
Dak County, South Dakota  
Date 11/16/05  
Base Year 04-5-05-06

Name Jennie Hanson  
Leader: Office ck \_\_\_\_\_ Field ck \_\_\_\_\_  
SpCk \_\_\_\_\_ Date \_\_\_\_\_  
Office check \_\_\_\_\_ Field check \_\_\_\_\_



TRACT 3



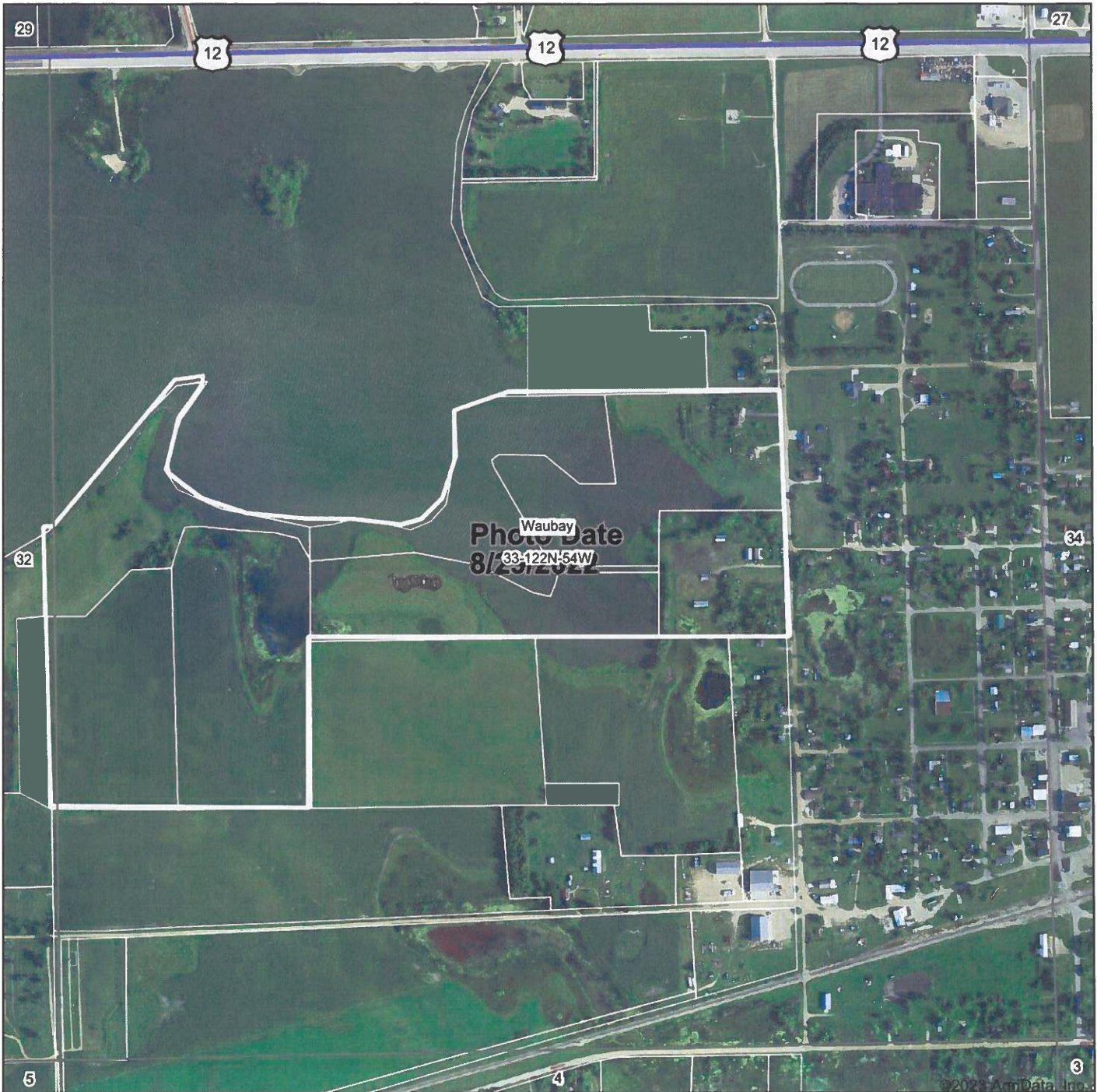
NOT TO SCALE



TRACT 3



# Aerial Map



Map Center: 45° 20' 1.45, -97° 18' 54.21



**33-122N-54W**  
**Day County**  
**South Dakota**

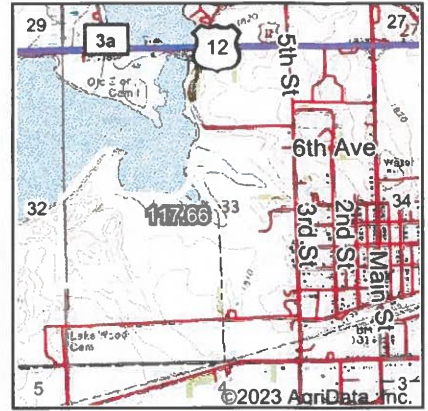


Maps Provided By  
  
 CUSTOMIZED ONLINE MAPPING  
 © AgnData, Inc. 2021 www.AgnDataInc.com

Field borders provided by Farm Service Agency as of 5/21/2008.



# Wetlands Map



State: **South Dakota**  
 Location: **33-122N-54W**  
 County: **Day**  
 Township: **Waubay**  
 Date: **2/24/2023**

Maps Provided By



Classification Code	Type	Acres
L2UBH	Lake	40.17
PEM1F	Freshwater Emergent Wetland	7.23
PEM1C	Freshwater Emergent Wetland	0.28
Total Acres		47.68

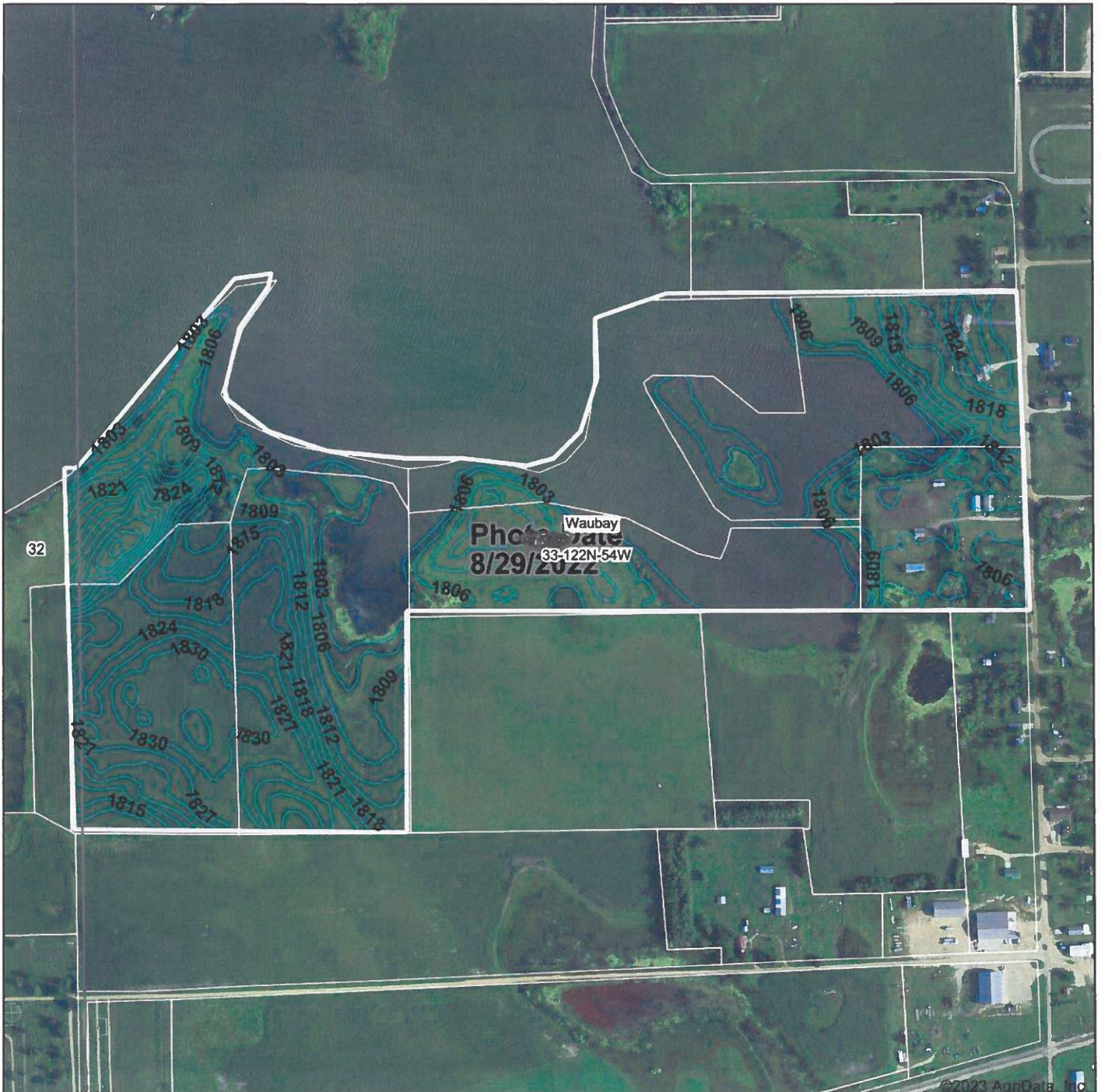
Data Source: National Wetlands Inventory website. U.S. DoI, Fish and Wildlife Service, Washington, D.C. <http://www.fws.gov/wetlands/>

Field borders provided by Farm Service Agency as of 5/21/2008.

# TRACT 3



# Topography Contours



©2023 AgriData, Inc

Source: USGS 3 meter dem  
 Interval(ft): 3.0  
 Min: 1,801.9  
 Max: 1,844.3  
 Range: 42.4  
 Average: 1,811.3  
 Standard Deviation: 9.78 ft



33-122N-54W  
 Day County  
 South Dakota

Map Center: 45° 20' 1.45, -97° 18' 54.21

Maps Provided By:  
  
 CUSTOMIZED ONLINE MAPPING  
 © AgriData, Inc. 2021 www.AgriDataInc.com

Field borders provided by Farm Service Agency as of 5/21/2008.

## TRACT 3