

# Aerial Map



map center: 45° 29' 35.02, 96° 59' 21.96  
scale: 10057

Maps provided by:



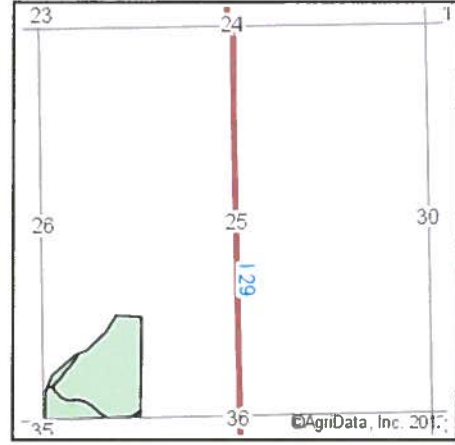
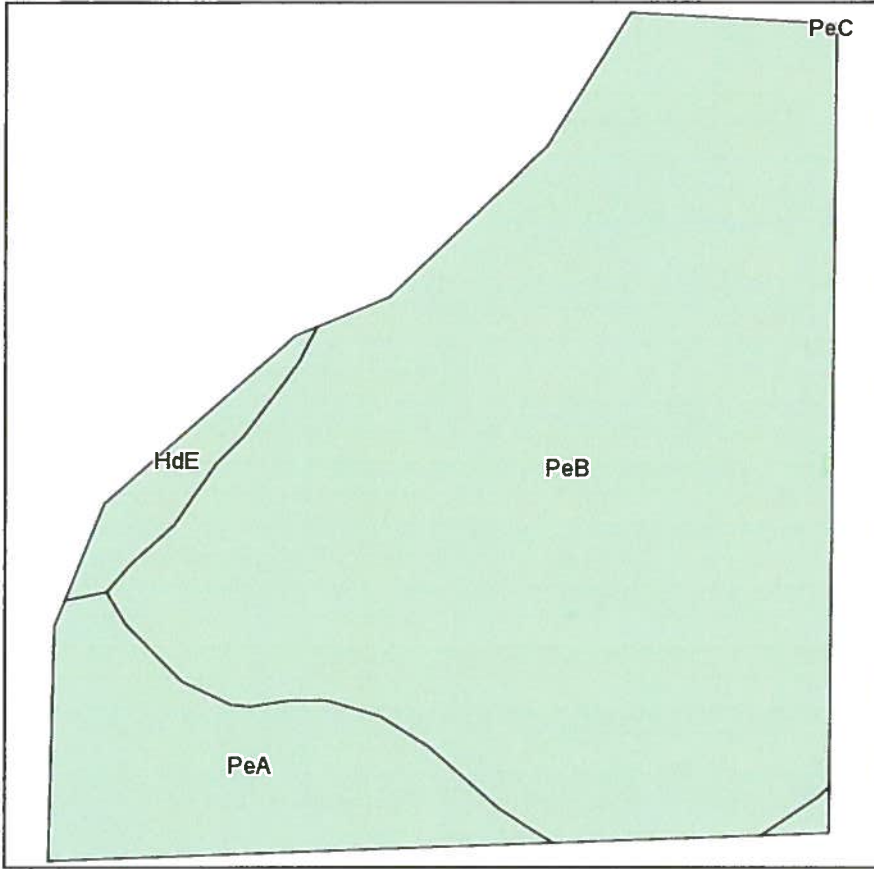
©AgriData, Inc. 2013  
www.AgriDataInc.com

**25-124N-51W**  
**Roberts County**  
**South Dakota**



4/16/2013

# Soils Map



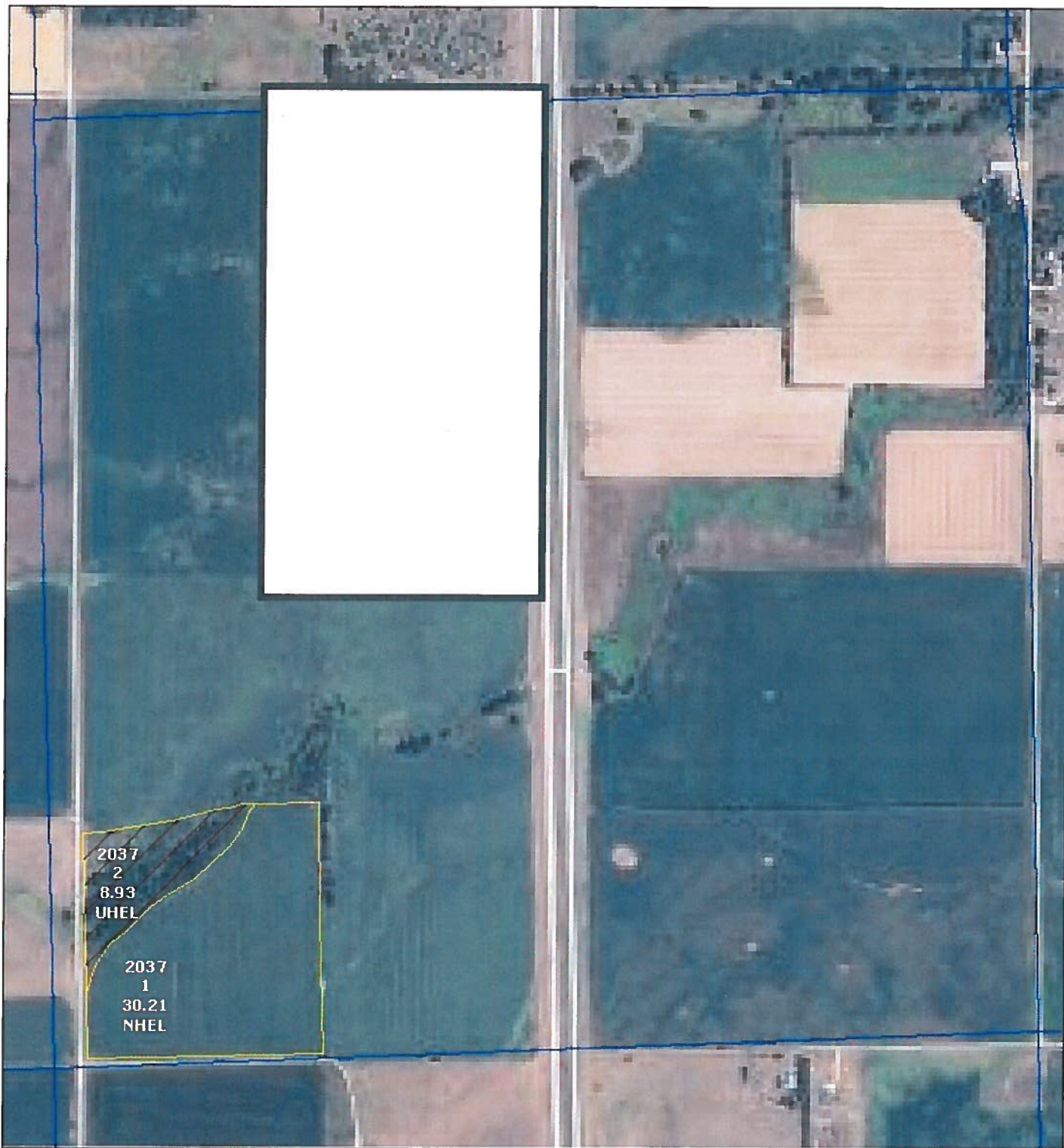
State: **South Dakota**  
 County: **Roberts**  
 Location: **25-124N-51W**  
 Township: **Agency**  
 Acres: **30.2**  
 Date: **4/16/2013**

Field borders provided by Farm Service Agency as of 5/21/2008.  
 Soils data provided by USDA and NRCS.



Code	Soil Description	Acres	Percent of field	Non-Irr Class	Productivity Index	Corn	Soybeans
PeB	Peever clay loam, 2 to 6 percent slopes	24.6	81.5%	IIIe	66	67	25
PeA	Peever clay loam, 0 to 2 percent slopes	4.6	15.4%	IIIs	71	76	28
HdE	Hattie clay loam, 15 to 40 percent slopes	0.9	3.1%	VIIe	27	14	5
<b>Weighted Average</b>					<b>65.6</b>	<b>66.7</b>	<b>24.8</b>





United States Department of Agriculture  
Farm Service Agency

December 27, 2012

PLSS: 25\_124N\_51W  
Farm: 9163

**Roberts County**

1:8,991 **2013 Maps**



Disclaimer: Wetland identifiers do not represent the size, shape or specific determination of the area. Refer to your original determination (CPA-026 and attached maps) for exact wetland boundaries and determinations, or contact NRCS.

**2012 Ortho-Photography - Not To Scale**