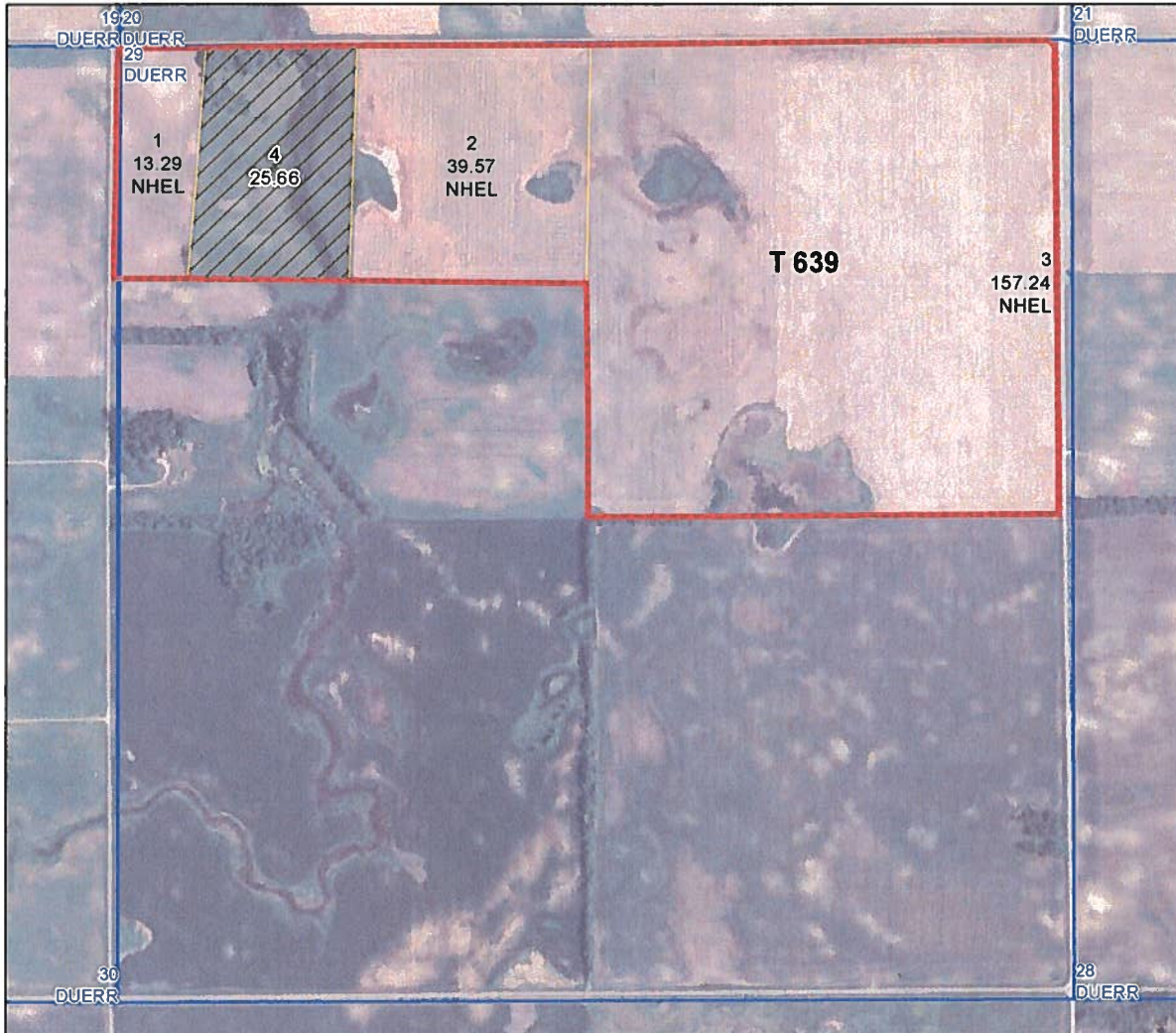




United States  
Department of  
Agriculture

## Richland County, North Dakota



### Farm 827

**S29 T129N R52LW**  
**2018 Program Year**

Map Created May 14, 2018



0 330 660 1,320  
Feet

#### Unless Otherwise Noted:

- Barley = Spring for Grain
- Canola = Spring for Processing
- Corn = Yellow for Grain
- Flax = Common for Grain
- Oats = Spring for Grain
- Soybeans = Common for Grain
- Sunflowers = Oil for Grain
- Wheat = Spring for Grain
- All fields are non-irrigated
- Shares are 100% to operator

### Common Land Unit

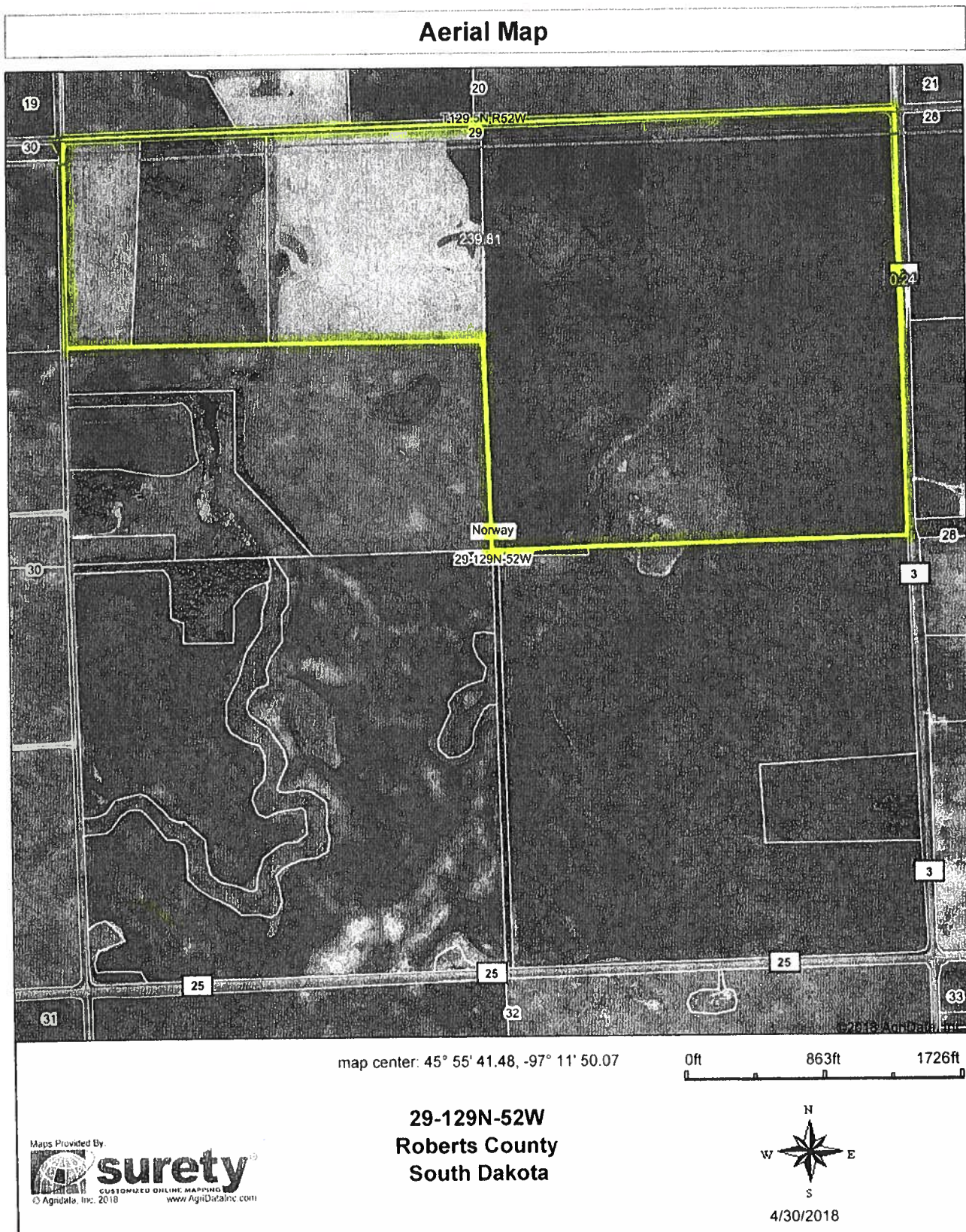
- Tract Boundary
- Non-Cropland
- Cropland
- PLSS

### Wetland Determination Identifiers

- Restricted Use
- Limited Restrictions
- Exempt from Conservation
- Compliance Provisions

United States Department of Agriculture (USDA) Farm Service Agency (FSA) maps are for FSA Program administration only. This map does not represent a legal survey or reflect actual ownership; rather it depicts the information provided directly from the producer and/or National Agricultural Imagery Program (NAIP) imagery. The producer accepts the data 'as is' and assumes all risks associated with its use. USDA-FSA assumes no responsibility for actual or consequential damage incurred as a result of any user's reliance on this data outside FSA Programs. Wetland identifiers do not represent the size, shape, or specific determination of the area. Refer to your original determination (CPA-026 and attached maps) for exact boundaries and determinations or contact USDA Natural Resources Conservation Service (NRCS). The imagery displayed on this map was collected in calendar year 2017.

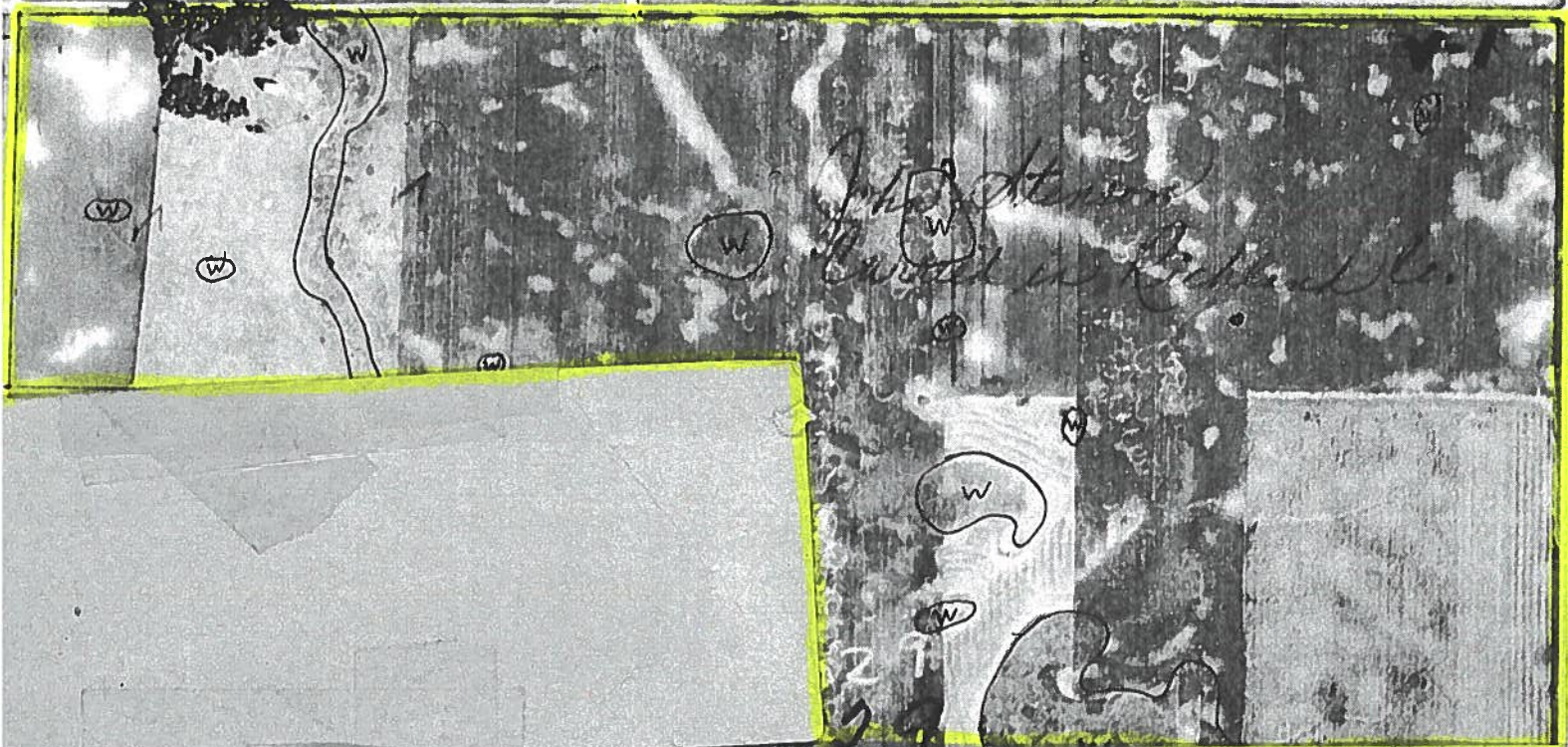




Field borders provided by Farm Service Agency as of 5/21/2008

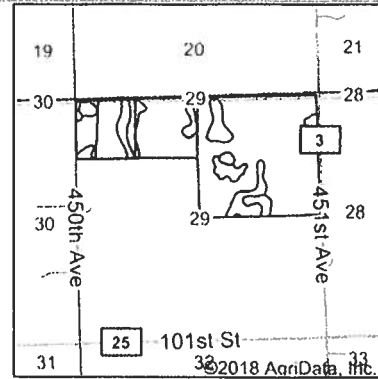
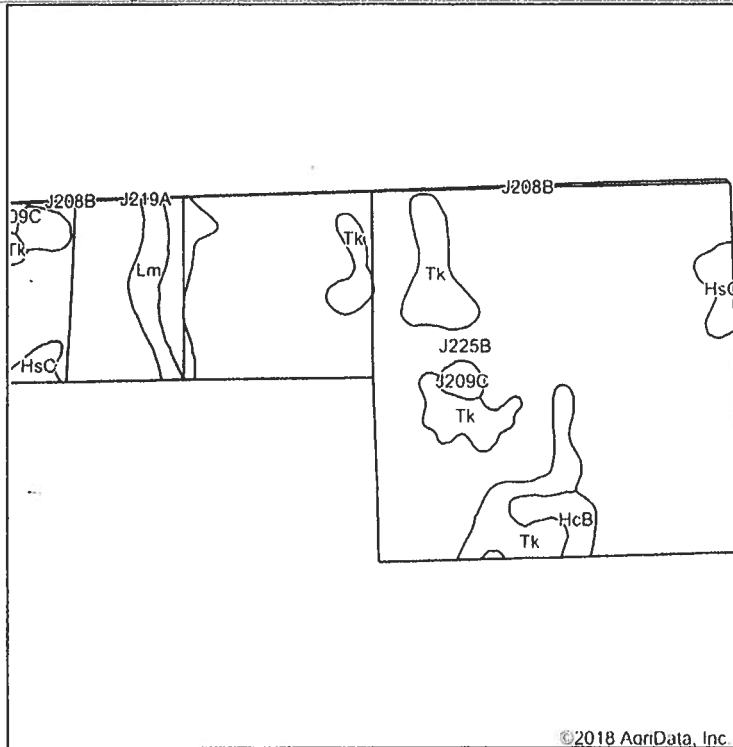


NOT TO SCALE





## Soils Map



State: **South Dakota**  
 County: **Roberts**  
 Location: **29-129N-52W**  
 Township: **Norway**  
 Acres: **235.69**  
 Date: **4/30/2018**

Maps Provided By



**surety**  
 CUSTOMIZED ONLINE MAPPING  
 © AgriData, Inc. 2018 www.AgridataInc.com



Area Symbol: ND077, Soil Area Version: 27

Area Symbol: SD109, Soil Area Version: 18

Code	Soil Description	Acres	Percent of field	Non-Irr Class *c	Productivity Index	Corn	Soybeans
J225B	Forman-Aastad complex, 1 to 4 percent slopes	186.63	79.2%	Ile	88		
Tk	Tonka silty clay loam, 0 to 1 percent slopes	23.26	9.9%	IVw	58		
J209C	Forman-Buse complex, 6 to 12 percent slopes, moderately eroded	8.04	3.4%	IIIe	65		
HsC	Esmond-Sisseton-Heimdal, complex, 2 to 12 percent slopes, moderately eroded	7.09	3.0%	IVe	58		
Lm	Lamoure silty clay loam, 0 to 2 percent slopes, occasionally flooded	5.27	2.2%	IIIw	68		
HcB	Hamerly-Vallers loams, 2 to 4 percent slopes	3.90	1.7%	IIs	64	64	21
J208B	Forman-Buse complex, 2 to 6 percent slopes	1.44	0.6%	Ile	77		
J209C	Forman-Buse complex, 6 to 12 percent slopes, moderately eroded	0.06	0.0%	IIIe	65		
Weighted Average					82.4	1.1	0.3

\*c: Using Capabilities Class Dominant Condition Aggregation Method

Soils data provided by USDA and NRCS.