

**Common Land Unit**  
 Non-Cropland  
 Cropland  
 Tract Boundary  
 PLSS

**Wetland Determination Identifiers**  
 Restricted Use  
 Limited Restrictions  
 Exempt from Conservation Compliance Provisions

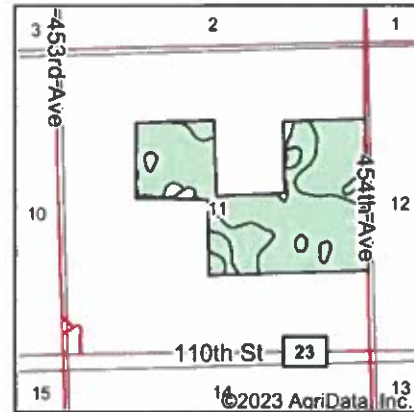
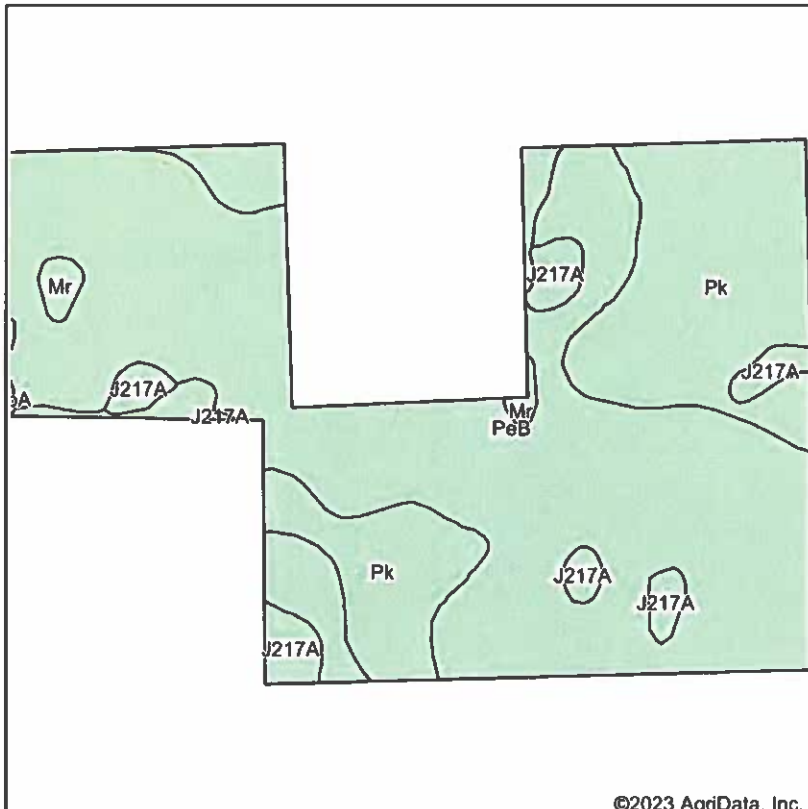
2023 Program Year  
 Map Created April 14, 2023

**Farm 5787**

**11-127N-52LW**

United States Department of Agriculture (USDA) Farm Service Agency (FSA) maps are for FSA Program administration only. This map does not represent a legal survey or reflect actual ownership; rather it depicts the information provided directly from the producer and/or National Agricultural Imagery Program (NAIP) imagery. The producer accepts the data 'as is' and assumes all risks associated with its use. USDA-FSA assumes no responsibility for actual or consequential damage incurred as a result of any user's reliance on this data outside FSA Programs. Wetland identifiers do not represent the size, shape, or specific determination of the area. Refer to your original determination (CPA-026 and attached maps) for exact boundaries and determinations as per USDA National Wetland Inventory (NWI).

# Soils Map



State: **South Dakota**  
 County: **Roberts**  
 Location: **11-127N-52W**  
 Township: **Bosko**  
 Acres:  
 Date:

©2023 AgriData, Inc.

Maps Provided By:



Soils data provided by USDA and NRCS.

Area Symbol: SD109, Soil Area Version: 23

Code	Soil Description	Acres	Percent of field	Non-Irr Class *c	Productivity Index	Corn Bu	Soybeans Bu	*n NCCPI Soybeans
PeB	Peever clay loam, 2 to 6 percent slopes	109.33	65.0%	IIIe	68			55
Pk	Peever-Tonka complex	46.59	27.7%	IIIs	70	70	26	38
J217A	Parnell silty clay loam, occasionally ponded, 0 to 1 percent slopes	8.84	5.3%	IIIw	71			45
Mr	Southam silty clay loam, 0 to 1 percent slopes	1.71	1.0%	VIIIw	10			9
J225B	Forman-Aastad complex, 1 to 4 percent slopes	1.69	1.0%	IIe	88			63
HbA	Hamerly-Tonka complex, 0 to 3 percent slopes	0.10	0.1%	IIIs	69	70	23	44
<b>Weighted Average</b>				<b>2.76</b>	<b>68.3</b>	<b>19.4</b>	<b>7.2</b>	<b>*n 49.4</b>

\*n: The aggregation method is "Weighted Average using all components"

\*c: Using Capabilities Class Dominant Condition Aggregation Method

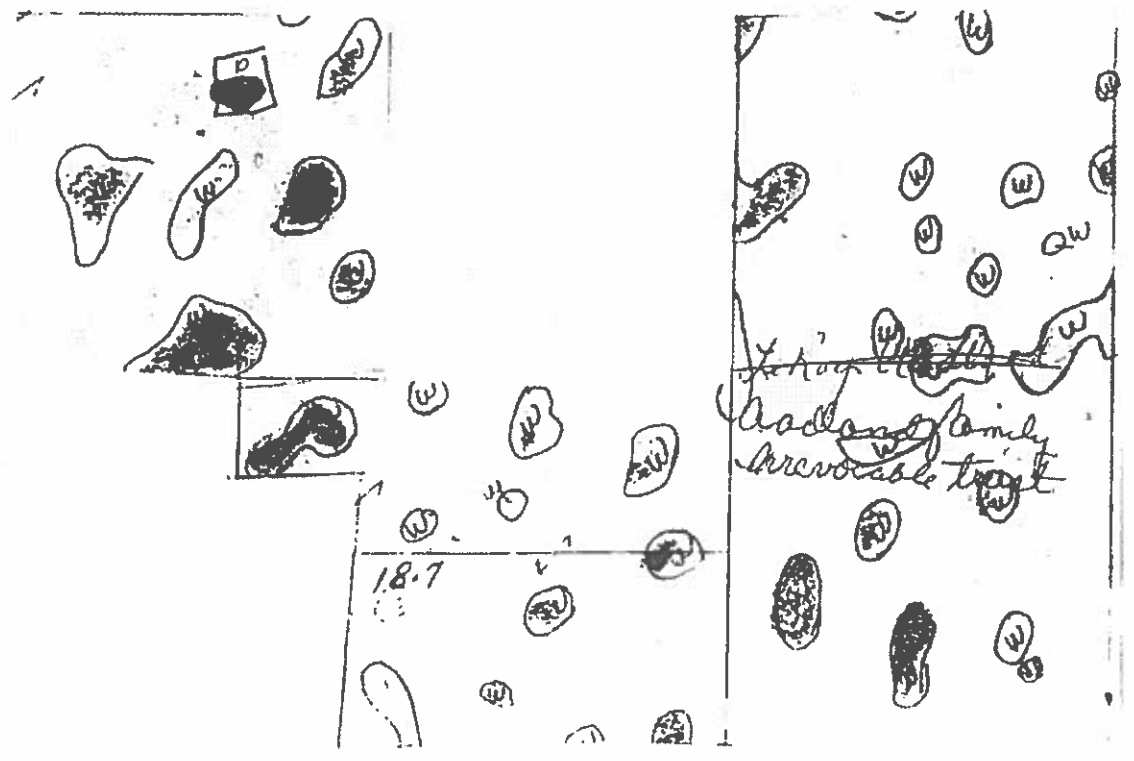
Soils data provided by USDA and NRCS.

OFFICIAL WETLAND  
 DETERMINATION FOR T...S  
 TRACT ONLY.

SYMBOL KEY

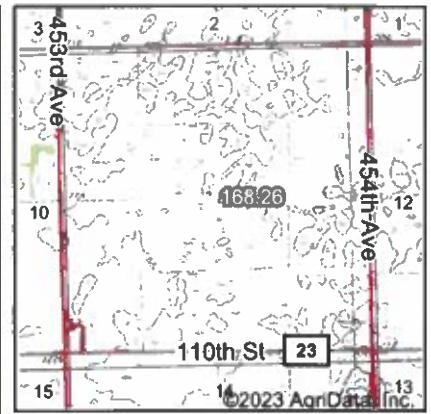
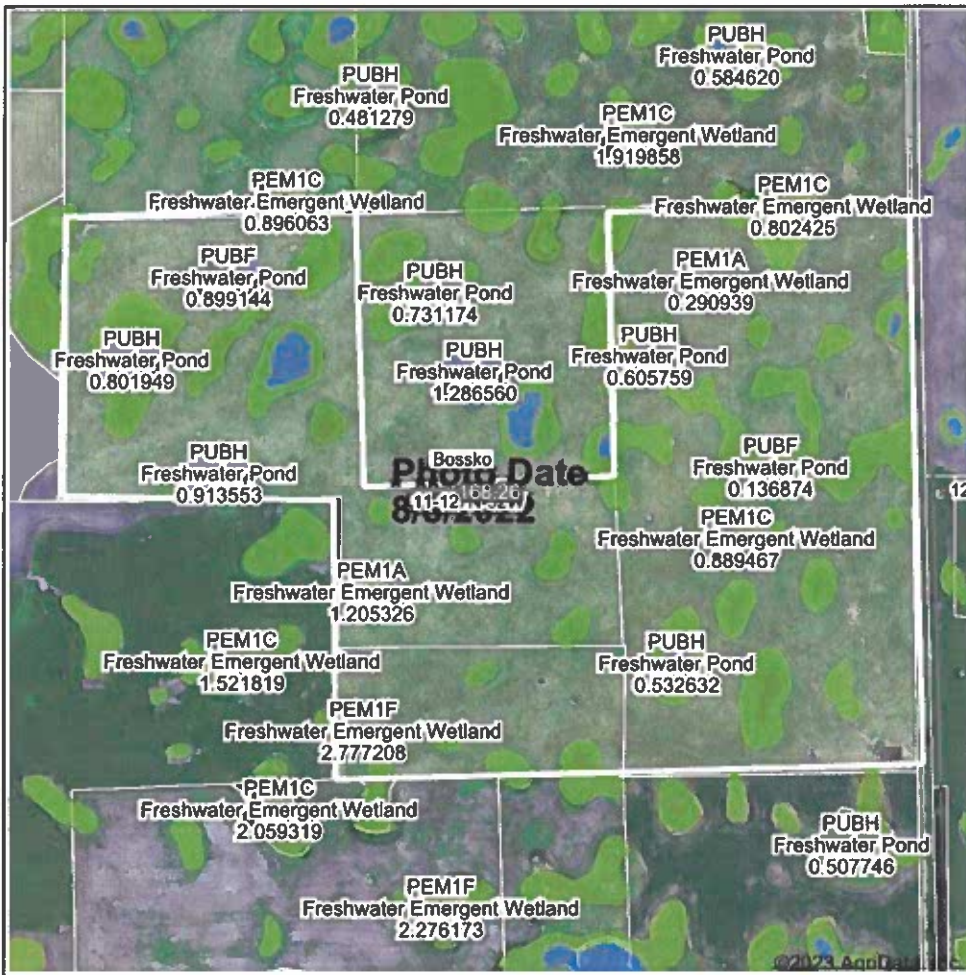
- (W) Wetland
- (FW) Ditched or tiled prior to 12-23-85 but still wetland
- (PC) Converted wetland prior to 12-23-85
- (CA) Converted wetland after 12-23-85
- (---) Ditched prior to 12-23-85
- (--->---) Tiled prior to 12-23-85

T 1185 1 - - - - -





# Wetlands Map



State: **South Dakota**  
 Location: **11-127N-52W**  
 County: **Roberts**  
 Township: **Bossko**  
 Date:

Maps Provided By:  
  
 CUSTOMIZED ONLINE MAPPING  
 © AgriData, Inc. 2023 www.AgriDataInc.com

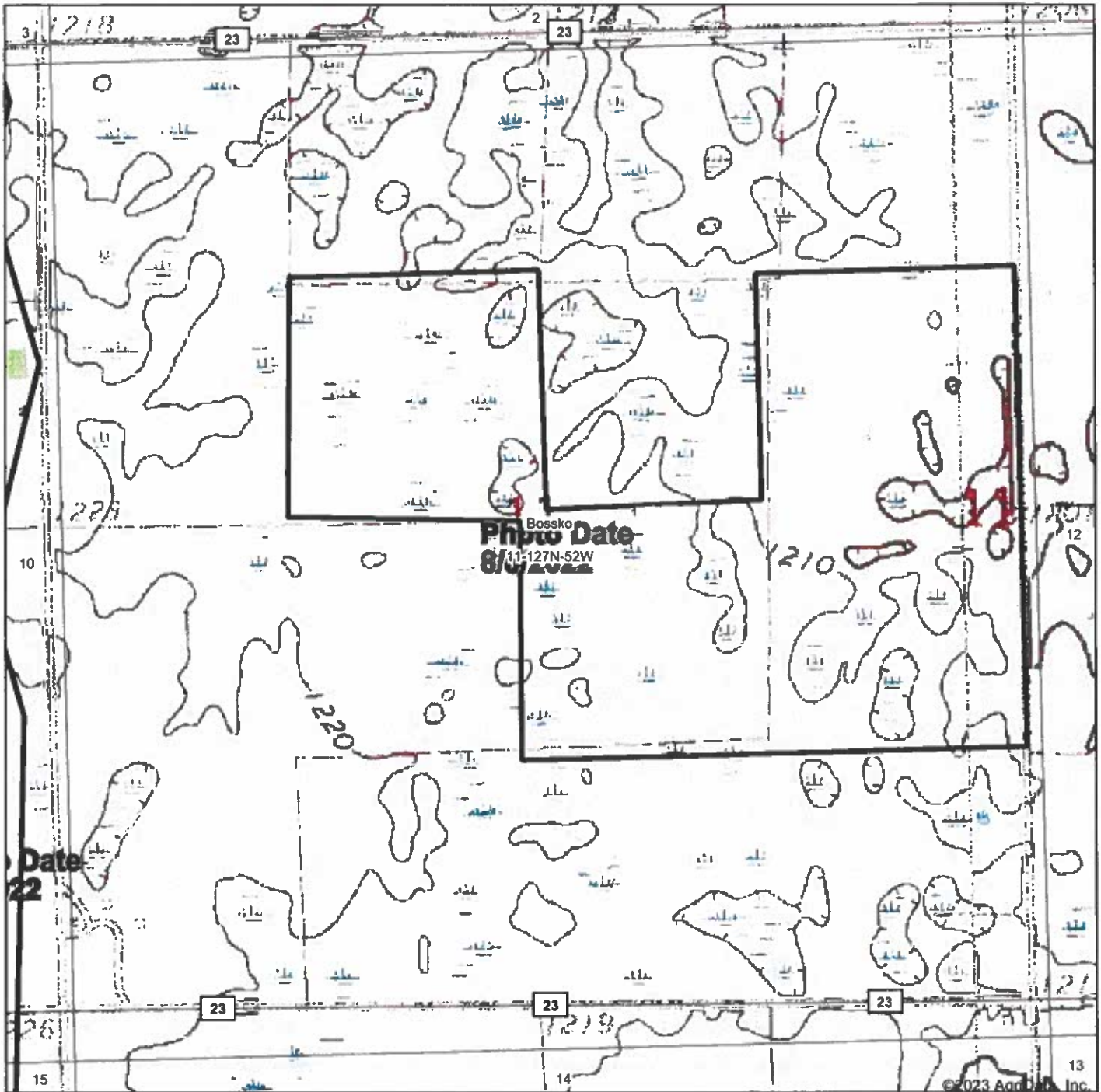


Classification Code	Type	Acres
PEM1C	Freshwater Emergent Wetland	25.57
PEM1A	Freshwater Emergent Wetland	10.34
PUBH	Freshwater Pond	2.86
PUBF	Freshwater Pond	2.11
PEM1F	Freshwater Emergent Wetland	1.47
<b>Total Acres</b>		<b>42.35</b>

Data Source: National Wetlands Inventory website. U.S. DoI, Fish and Wildlife Service, Washington, D.C. <http://www.fws.gov/wetlands/>

Field borders provided by Farm Service Agency as of 5/21/2008.

# Topography Map



map center: 45° 47' 50, -97° 8' 3.07



**11-127N-52W**  
**Roberts County**  
**South Dakota**



Field borders provided by Farm Service Agency as of 5/21/2008.