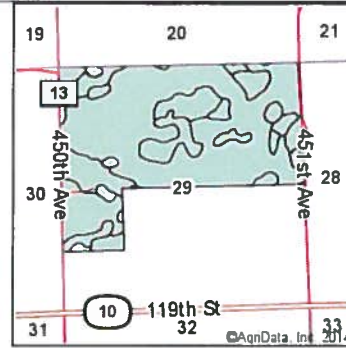
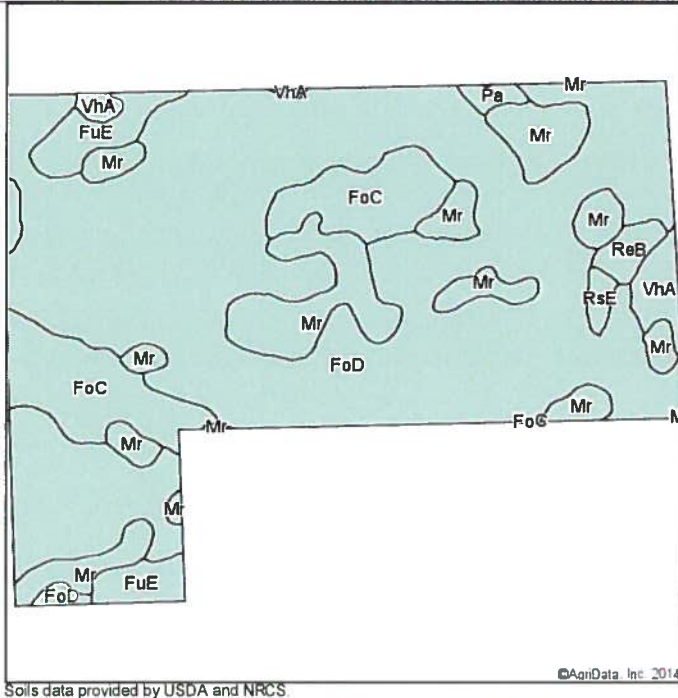




Soil Map

Soils Version
latest ▼

State: **South Dakota**
 County: **Roberts**
 Location: **29-126N-52W**
 Township: **Long Hollow**
 Acres: **368.77**
 Date: **7/16/2014**



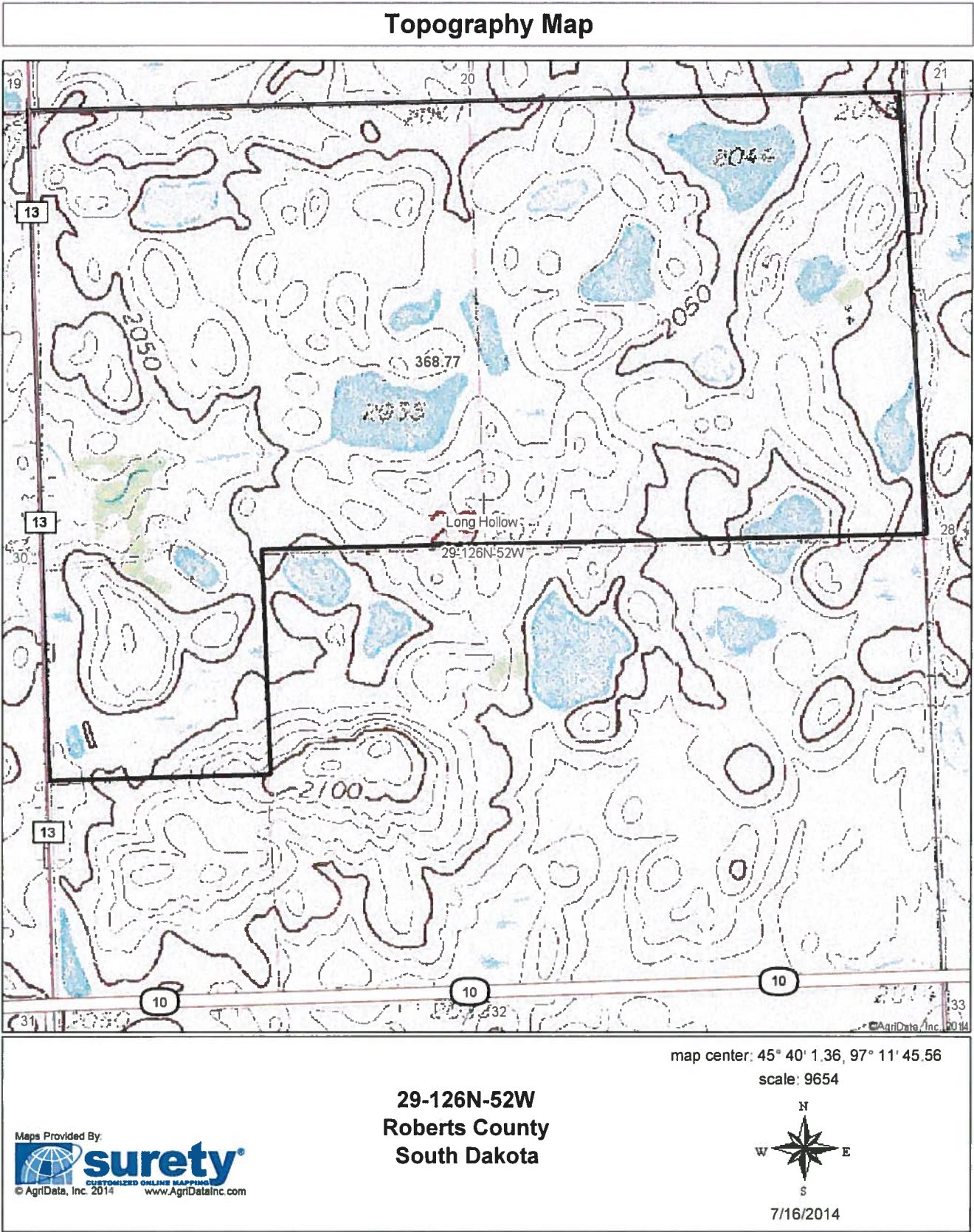
Maps Provided By:

 © AgriData, Inc. 2014 www.AgrDataInc.com

Area Symbol: SD109, Soil Area Version: 14

Code	Soil Description	Acres	Percent of field	Non-Irr Class	Productivity Index	Corn	Soybeans
FoD	Forman-Aastad loams, 9 to 15 percent slopes	250.82	68.0%	IIIe	56	58	22
Mr	Southam silty clay loam	51.91	14.1%	VIIIw	10	5	1
FoC	Forman-Aastad loams, 6 to 9 percent slopes	38.15	10.3%	IIIe	69	69	26
FuE	Forman-Buse loams, 15 to 25 percent slopes	12.88	3.5%	VIe	29	22	8
VhA	Vallers-Hamerly loams, 0 to 2 percent slopes	7.27	2.0%	IIIs	57	58	19
ReB	Renshaw loam, 3 to 9 percent slopes	3.80	1.0%	IVe	39	23	9
RsE	Renshaw-Sioux stony loams, 9 to 40 percent slopes	2.02	0.5%	VIIIs	4		
Pa	Parnell silty clay loam	1.92	0.5%	Vw	31	29	11
Weighted Average					49.4	49.6	18.6

Field borders provided by Farm Service Agency as of 5/21/2008. Aerial photography provided by Aerial Photography Field Office.



Aerial Map



map center: 45° 40' 9.02, 97° 10' 54.63

scale: 7545

Maps Provided By:



© AgriData, Inc. 2014 www.AgriDataInc.com

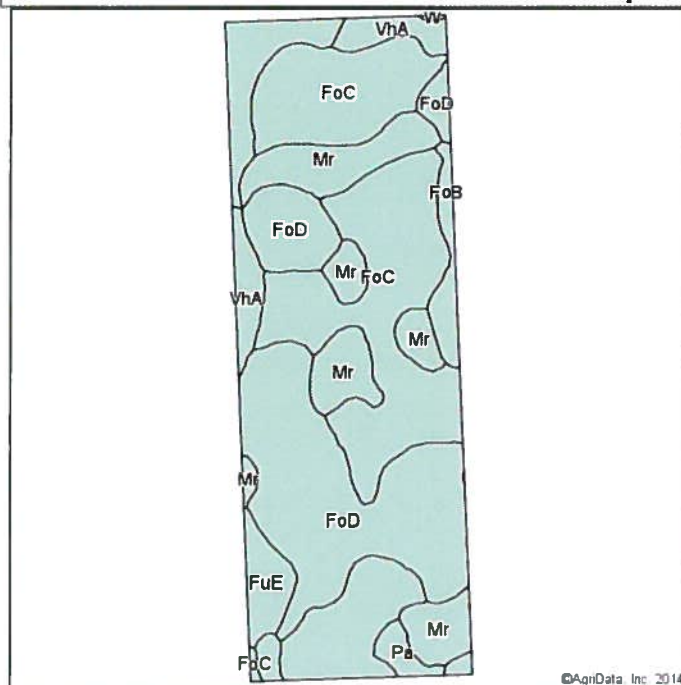
28-126N-52W
Roberts County
South Dakota



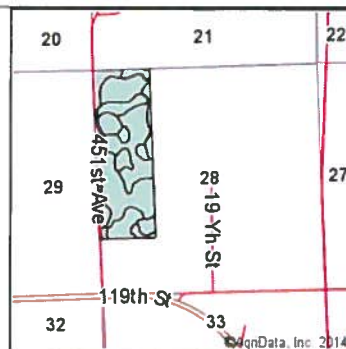
7/16/2014

Field borders provided by Farm Service Agency as of 5/21/2008. Aerial photography provided by Aerial Photography Field Office.

Soil Map

Soils Version
latest ▼

Soils data provided by USDA and NRCS



State: **South Dakota**
 County: **Roberts**
 Location: **28-126N-52W**
 Township: **Long Hollow**
 Acres: **122.21**
 Date: **7/16/2014**



Maps Provided By:
surety
 CUSTOMIZED ONLINE MAPPING
 © AgriData, Inc. 2014 www.AgriDataInc.com

Area Symbol: SD109, Soil Area Version: 14

Code	Soil Description	Acres	Percent of field	Non-Irr Class	Productivity Index	Corn	Soybeans
FoC	Forman-Aastad loams, 6 to 9 percent slopes	49.15	40.2%	IIIe	69	69	26
FoD	Forman-Aastad loams, 9 to 15 percent slopes	41.27	33.8%	IIIe	56	58	22
Mr	Southam silty clay loam	18.29	15.0%	VIIIw	10	5	1
VhA	Vallers-Hamerly loams, 0 to 2 percent slopes	5.28	4.3%	IIIs	57	58	19
FuE	Forman-Buse loams, 15 to 25 percent slopes	3.56	2.9%	VIe	29	22	8
FoB	Forman-Aastad loams, 2 to 6 percent slopes	3.04	2.5%	Ile	82	79	30
Pa	Parnell silty clay loam	1.54	1.3%	Vw	31	29	11
W	Water	0.08	0.1%		0		
Weighted Average					53.9	53.6	20

Field borders provided by Farm Service Agency as of 5/21/2008. Aerial photography provided by Aerial Photography Field Office.

Topography Map



map center: 45° 40' 9.02, 97° 10' 54.63
scale: 7545

28-126N-52W
Roberts County
South Dakota



7/16/2014

Maps Provided By:
 **surety**
CUSTOMIZED ONLINE MAPPING
© AgriData, Inc. 2014 www.AgriDataInc.com

Field borders provided by Farm Service Agency as of 5/21/2008. Aerial photography provided by Aerial Photography Field Office.