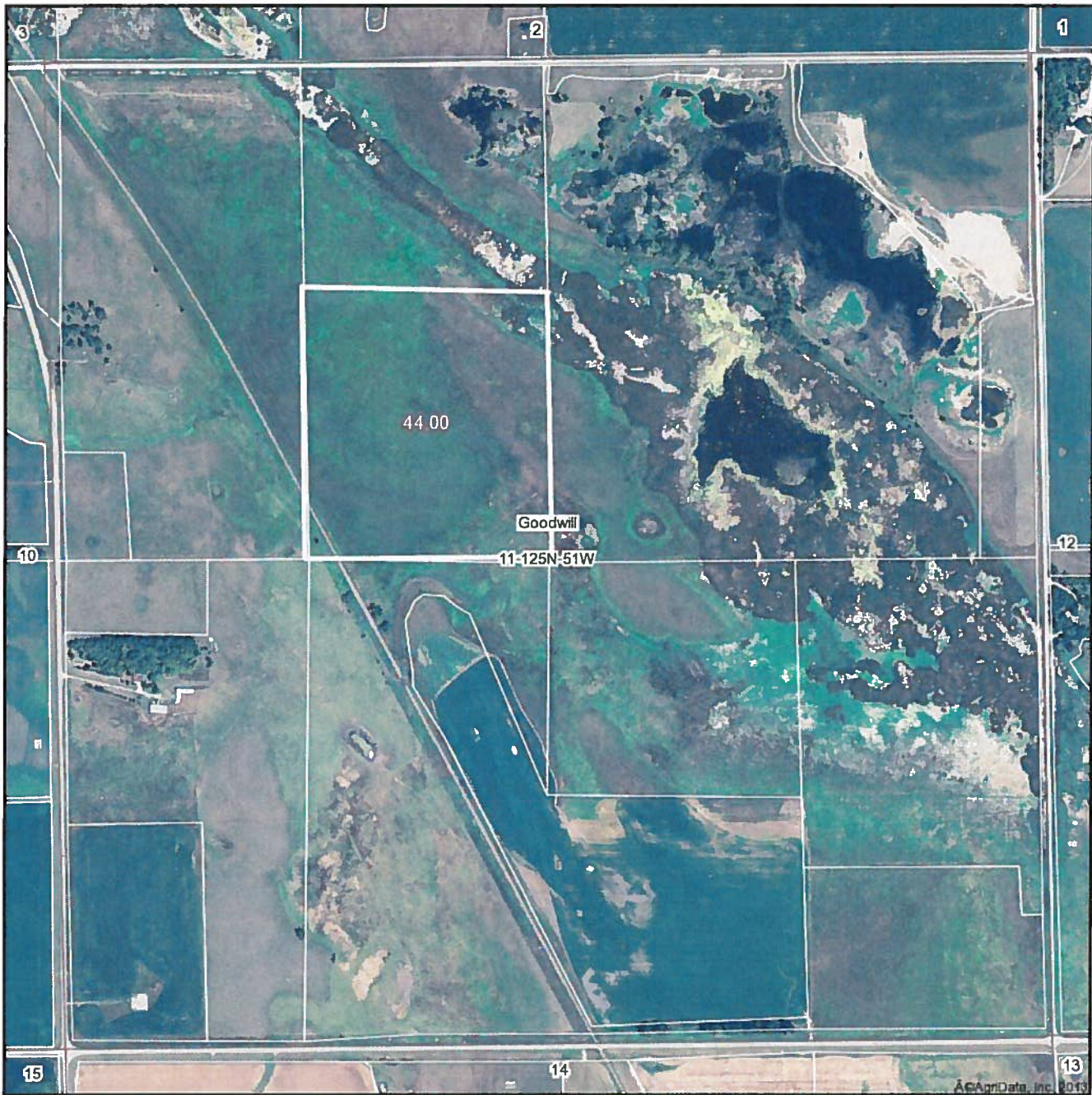


### Aerial Map



©AgriData, Inc. 2013

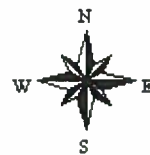
map center: 45° 37' 25.83, 97° 0' 34.3  
scale: 10170

Maps provided by:



©AgriData, Inc. 2013  
www.AgriDataInc.com

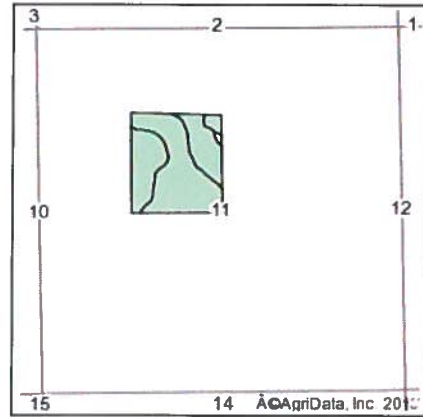
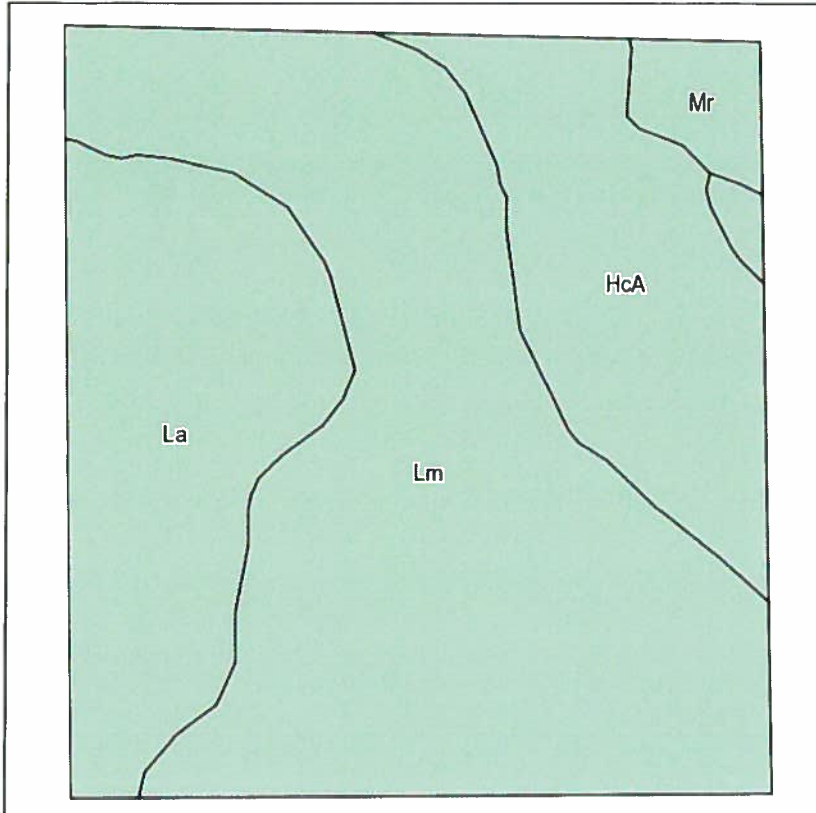
**11-125N-51W**  
**Roberts County**  
**South Dakota**



8/13/2013

Field borders provided by Farm Service Agency as of 5/21/2008. Aerial photography provided by Aerial Photography Field Office.

### Soils Map



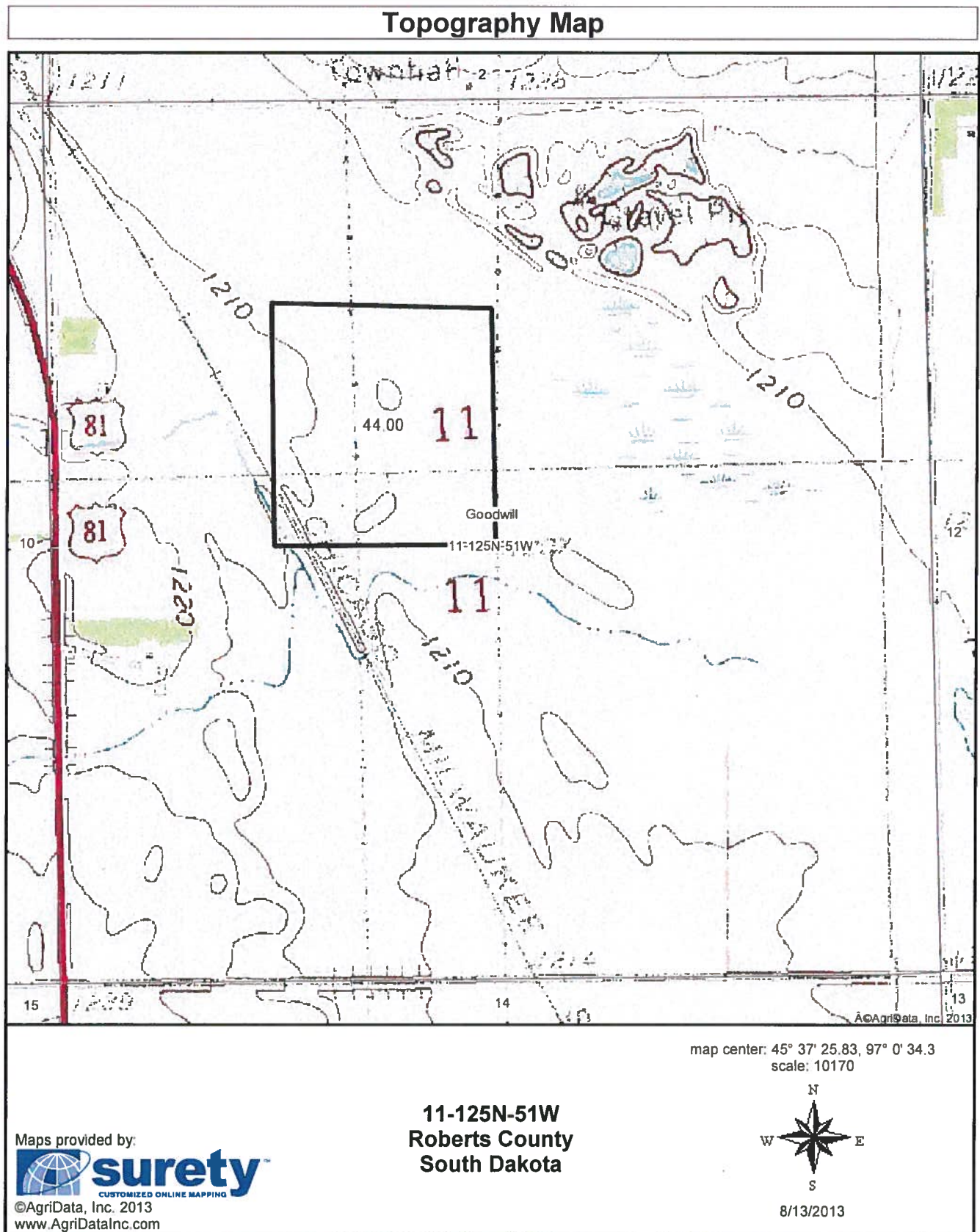
State: **South Dakota**  
 County: **Roberts**  
 Location: **11-125N-51W**  
 Township: **Goodwill**  
 Acres: **44**  
 Date: **8/13/2013**

Field borders provided by Farm Service Agency as of 5/21/2008.  
 Soils data provided by USDA and NRCS.

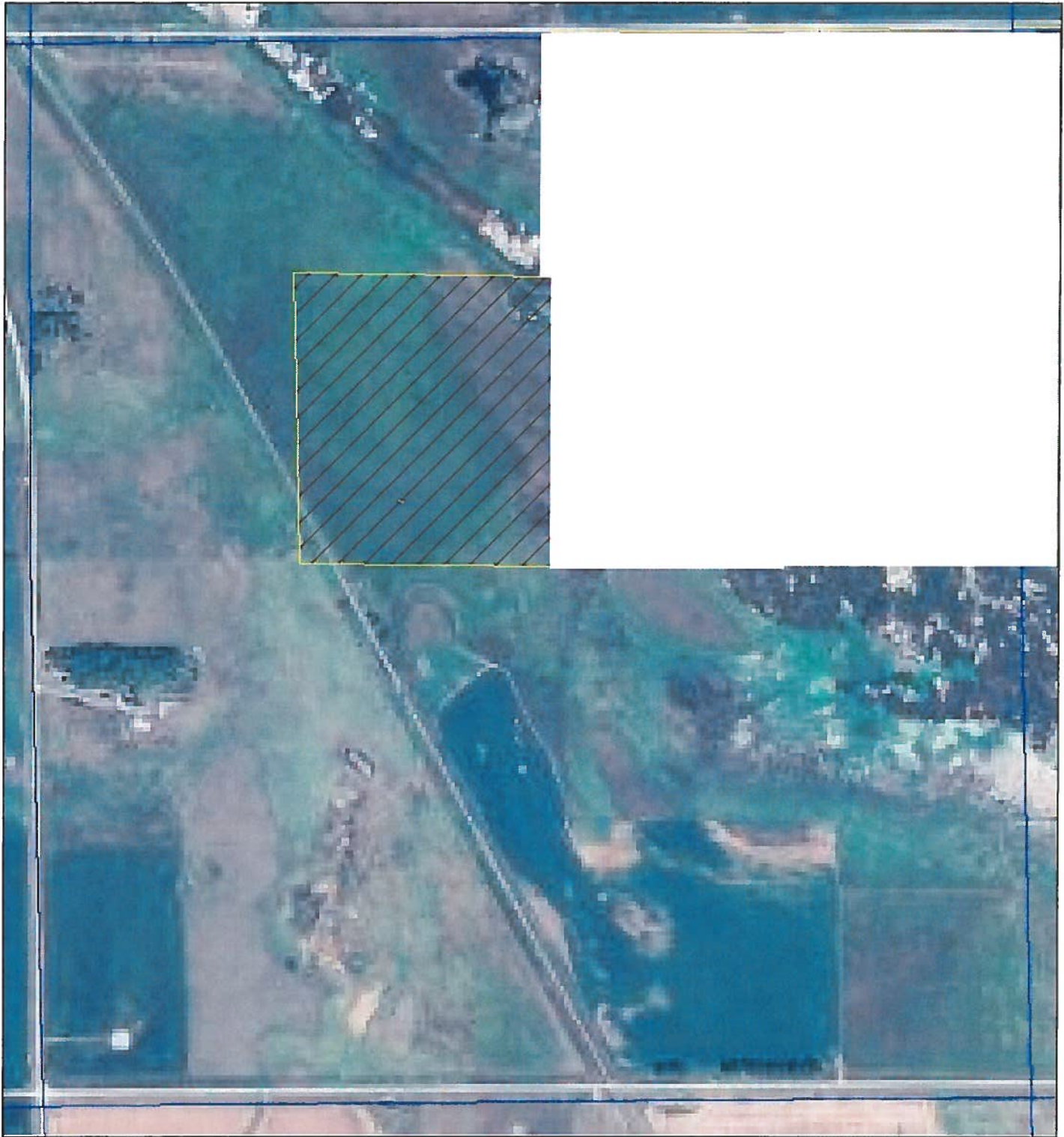


Code	Soil Description	Acres	Percent of field	Non-Irr Class	Productivity Index	Corn	Soybeans
Lm	Lamoure silty clay loam	23.9	54.4%	IIIw	69	69	22
La	LaDelle silt loam	10.5	23.9%	I	88	89	33
HcA	Hamerly-Vallers loams, 0 to 2 percent slopes	8.3	18.8%	IIw	71	70	22
Mr	Southam silty clay loam	1.3	2.9%	VIIIw	10	5	1
<b>Weighted Average</b>					<b>72.2</b>	<b>72.1</b>	<b>24</b>





Field borders provided by Farm Service Agency as of 5/21/2008. Aerial photography provided by Aerial Photography Field Office.



United States Department of Agriculture  
Farm Service Agency

PLSS: 11\_125N\_51W  
Farm: 4406

**Roberts County**

1:8,159 **2013 Maps**

December 20, 2012



Disclaimer: Wetland identifiers do not represent the size, shape or specific determination of the area.  
Refer to your original determination (CPA-026 and attached maps) for exact wetland  
boundaries and determinations, or contact NRCS.

**2012 Ortho-Photography - Not To Scale**

