



United States
Department of
Agriculture

Roberts County, South Dakota



- Common Land Unit**
- Other Ag
 - Cropland
 - Tract Boundary
 - PLSS

Wetland Determination Identifiers

- Restricted Use
- ▼ Limited Restrictions
- Exempt from Conservation
- Compliance Provisions



2017 Program Year

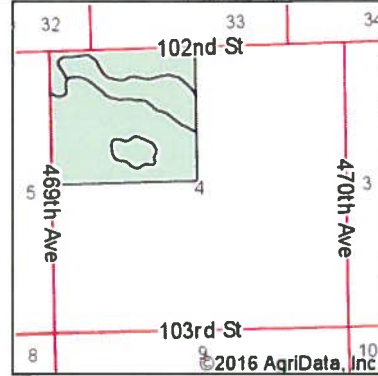
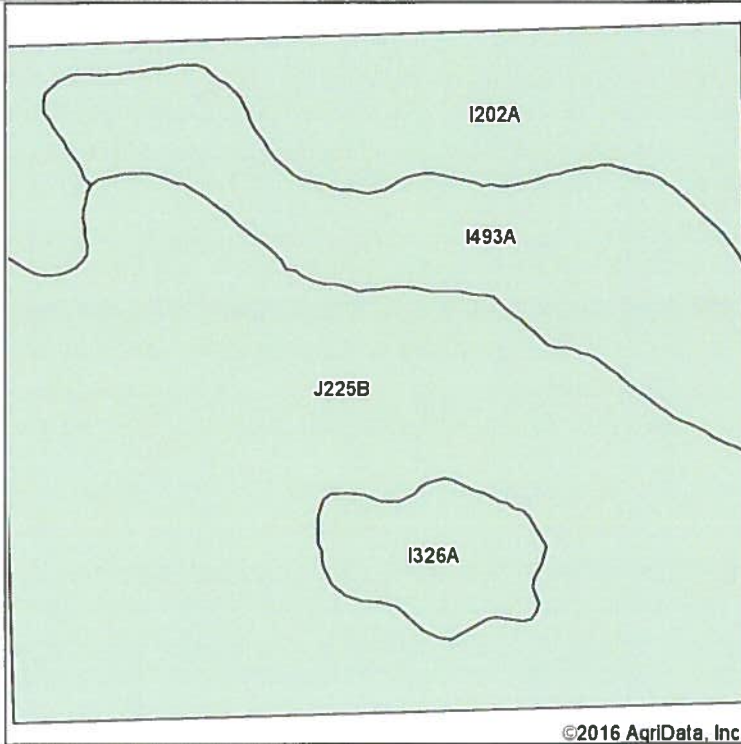
Map Created September 02, 2016

Farm 3838

4-128-49

United States Department of Agriculture (USDA) Farm Service Agency (FSA) maps are for FSA Program administration only. This map does not represent a legal survey or reflect actual ownership, rather it depicts the information provided directly from the producer and/or National Agricultural Imagery Program (NAIP) imagery. The producer accepts the data 'as is' and assumes all risks associated with its use. USDA-FSA assumes no responsibility for actual or consequential damage incurred as a result of any user's reliance on this data outside FSA Programs. Wetland identifiers do not represent the size, shape, or specific determination of the area. Refer to your original determination (CPA-026 and attached maps) for exact boundaries and determinations or contact USDA Natural Resources Conservation Service (NRCS).

Soils Map



State: **South Dakota**
 County: **Roberts**
 Location: **4-128N-49W**
 Township: **Victor**
 Acres: **146.7**
 Date: **9/30/2016**



Soils data provided by USDA and NRCS.

Area Symbol: SD109, Soil Area Version: 16

Code	Soil Description	Acres	Percent of field	Non-Irr Class *c	Irr Class *c	Productivity Index
J225B	Forman-Aastad complex, 1 to 4 percent slopes	83.07	56.6%	Ile		88
I202A	Gardena silt loam, 0 to 2 percent slopes	28.35	19.3%	Ile	Ile	94
I493A	Gardena-Eckman loams, 0 to 2 percent slopes	27.72	18.9%	Ile	Ile	88
I326A	Towner fine sandy loam, 0 to 3 percent slopes	7.56	5.2%	IIle		62
Weighted Average						87.8

*c: Using Capabilities Class Dominant Condition Aggregation Method

Soils data provided by USDA and NRCS.

Aerial Map



map center: 45° 53' 58.82, -96° 48' 10.97

0ft 843ft 1686ft

Maps Provided By:

CUSTOMIZED ONLINE MAPPING
© AgriData, Inc. 2016 www.AgriDataInc.com

4-128N-49W
Roberts County
South Dakota



9/30/2016

Field borders provided by Farm Service Agency as of 5/21/2008



Common Land Unit
 [] Other Ag
 [] Cropland
 [] Tract Boundary
 [] PLSS

Wetland Determination Identifiers
 ● Restricted Use
 ▽ Limited Restrictions
 □ Exempt from Conservation Compliance Provisions



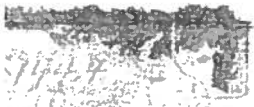
2017 Program Year
 Map Created September 02, 2016

Farm 3838

4-128-49

United States Department of Agriculture (USDA) Farm Service Agency (FSA) maps are for FSA Program administration only. This map does not represent a legal survey or reflect actual ownership, rather it depicts the information provided directly from the producer and/or National Agricultural Imagery Program (NAIP) imagery. The producer accepts the data 'as is' and assumes all risks associated with its use. USDA-FSA assumes no responsibility for actual or consequential damage incurred as a result of any user's reliance on this data outside FSA Programs. Wetland identifiers do not represent the size, shape, or specific determination of the area. Refer to your original determination (CPA-026 and attached maps) for exact boundaries and determinations or contact USDA Natural Resources Conservation Service (NRCS).

NOT TO



(W)

(W)

(S)

(W)

(W)

Topography Map



map center: 45° 53' 58.82, -96° 48' 10.97



4-128N-49W
Roberts County
South Dakota



9/30/2016

Maps Provided By

CUSTOMIZED ONLINE MAPPING
© AgriData, Inc. 2016 www.AgriDataInc.com

Field borders provided by Farm Service Agency as of 5/21/2008



United States
Department of
Agriculture

Roberts County, South Dakota



- Common Land Unit**
- Other Ag
 - Cropland
 - PLSS
 - Tract Boundary

- Wetland Determination Identifiers**
- Restricted Use
 - Limited Restrictions
 - Exempt from Conservation Compliance Provisions



2017 Program Year

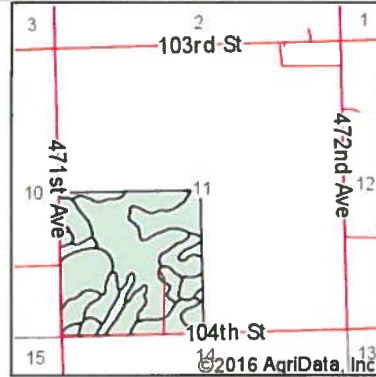
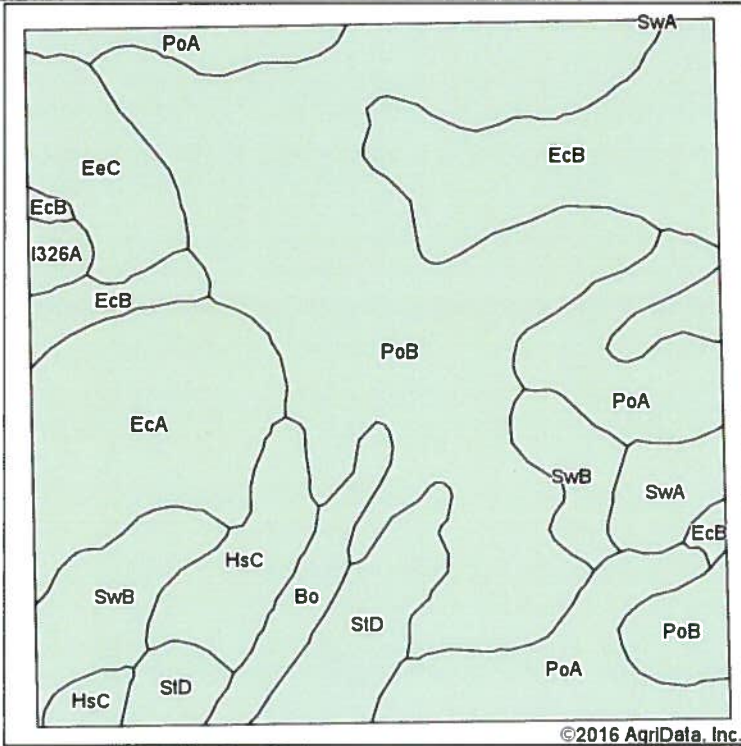
Map Created September 02, 2016

Farm 3838

11-128-49

United States Department of Agriculture (USDA) Farm Service Agency (FSA) maps are for FSA Program administration only. This map does not represent a legal survey or reflect actual ownership, rather it depicts the information provided directly from the producer and/or National Agricultural Imagery Program (NAIP) imagery. The producer accepts the data 'as is' and assumes all risks associated with its use. USDA-FSA assumes no responsibility for actual or consequential damage incurred as a result of any user's reliance on this data outside FSA Programs. Wetland identifiers do not represent the size, shape, or specific determination of the area. Refer to your original determination (CPA-026 and attached maps) for exact boundaries and determinations or contact USDA Natural Resources Conservation Service (NRCS).

Soils Map



State: **South Dakota**
 County: **Roberts**
 Location: **11-128N-49W**
 Township: **Victor**
 Acres: **160.6**
 Date: **9/30/2016**



Soils data provided by USDA and NRCS.

Area Symbol: SD109, Soil Area Version: 16

Code	Soil Description	Acres	Percent of field	Non-Irr Class *c	Productivity Index	Corn	Soybeans
PoB	Poinsett-Waubay silty clay loams, 1 to 6 percent slopes	57.48	35.8%	Ile	89		
PoA	Poinsett-Waubay silty clay loams, 0 to 2 percent slopes	21.58	13.4%	Is	93		
EcB	Eckman loam, 2 to 6 percent slopes	18.86	11.7%	Ile	83	84	31
EcA	Eckman loam, 0 to 2 percent slopes	16.95	10.6%	Is	90	90	34
SwB	Sverdrup sandy loam, 2 to 6 percent slopes	10.12	6.3%	Ille	51		
StD	Sisseton-Heimdal loams, 9 to 25 percent slopes	9.25	5.8%	Vle	35	36	13
HsC	Heimdal-Sisseton loams, 6 to 9 percent slopes	7.76	4.8%	Ille	62	59	21
EeC	Eckman-Zell complex, 6 to 9 percent slopes	7.51	4.7%	Ille	67	65	24
SwA	Sverdrup sandy loam, 0 to 2 percent slopes	5.24	3.3%	Ills	53		
Bo	Borup silt loam	4.54	2.8%	IVw	57	54	17
I326A	Towner fine sandy loam, 0 to 3 percent slopes	1.31	0.8%	Ille	62		
Weighted Average					78.8	28.9	10.6

*c Using Capabilities Class Dominant Condition Aggregation Method

Aerial Map



©2016 AgriData, Inc.

map center: 45° 53' 7.32, -96° 45' 40.71



Maps Provided By:

CUSTOMIZED ONLINE MAPPING
© AgriData, Inc. 2016 www.AgriDataInc.com

11-128N-49W
Roberts County
South Dakota



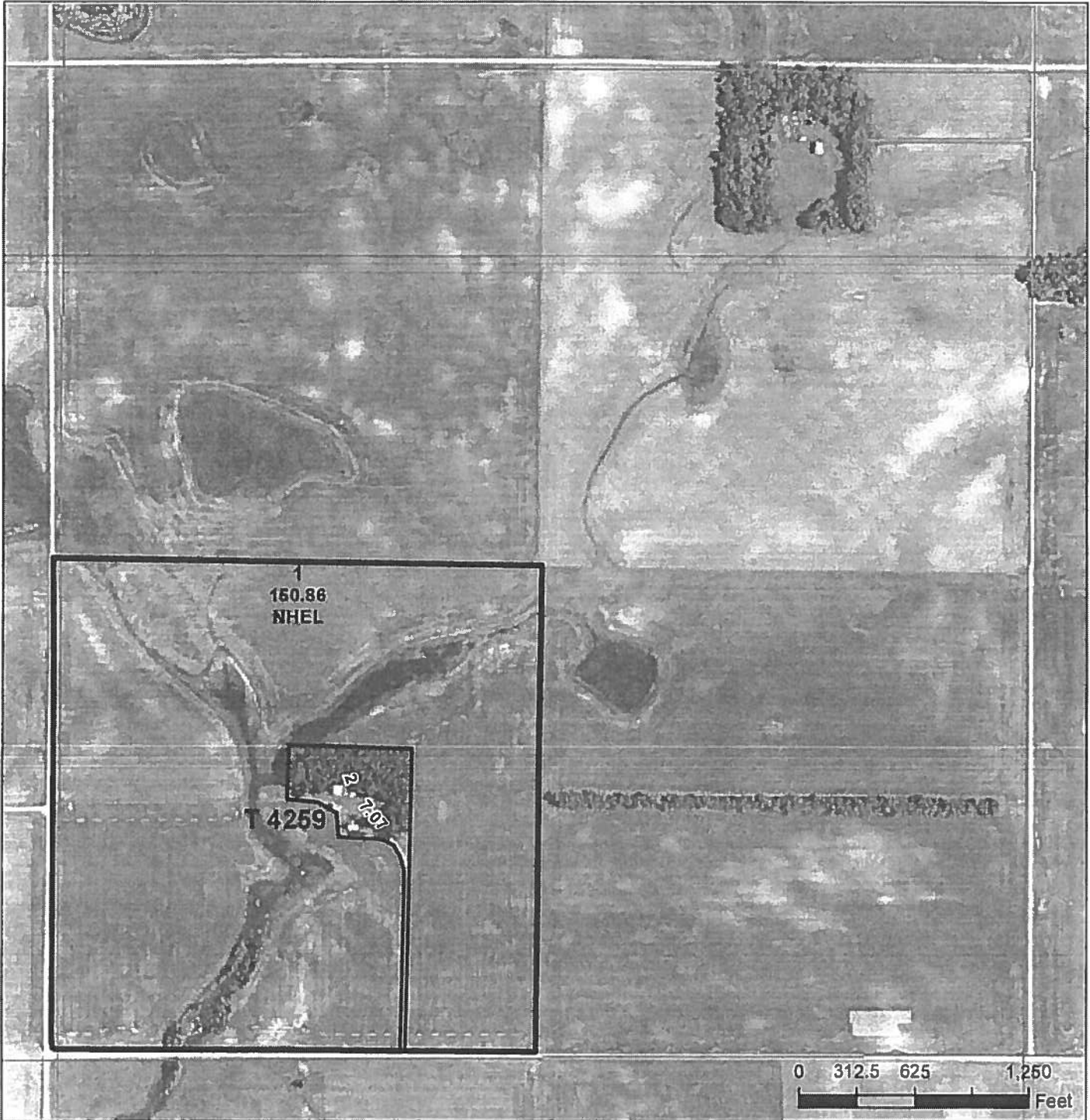
9/30/2016

Field borders provided by Farm Service Agency as of 5/21/2008.



United States
Department of
Agriculture

Roberts County, South Dakota



- Common Land Unit**
- Other Ag
 - Cropland
 - Tract Boundary
 - PLSS

- Wetland Determination Identifiers**
- Restricted Use
 - Limited Restrictions
 - Exempt from Conservation Compliance Provisions



2017 Program Year
Map Created September 02, 2016

Farm 3838

11-128-49

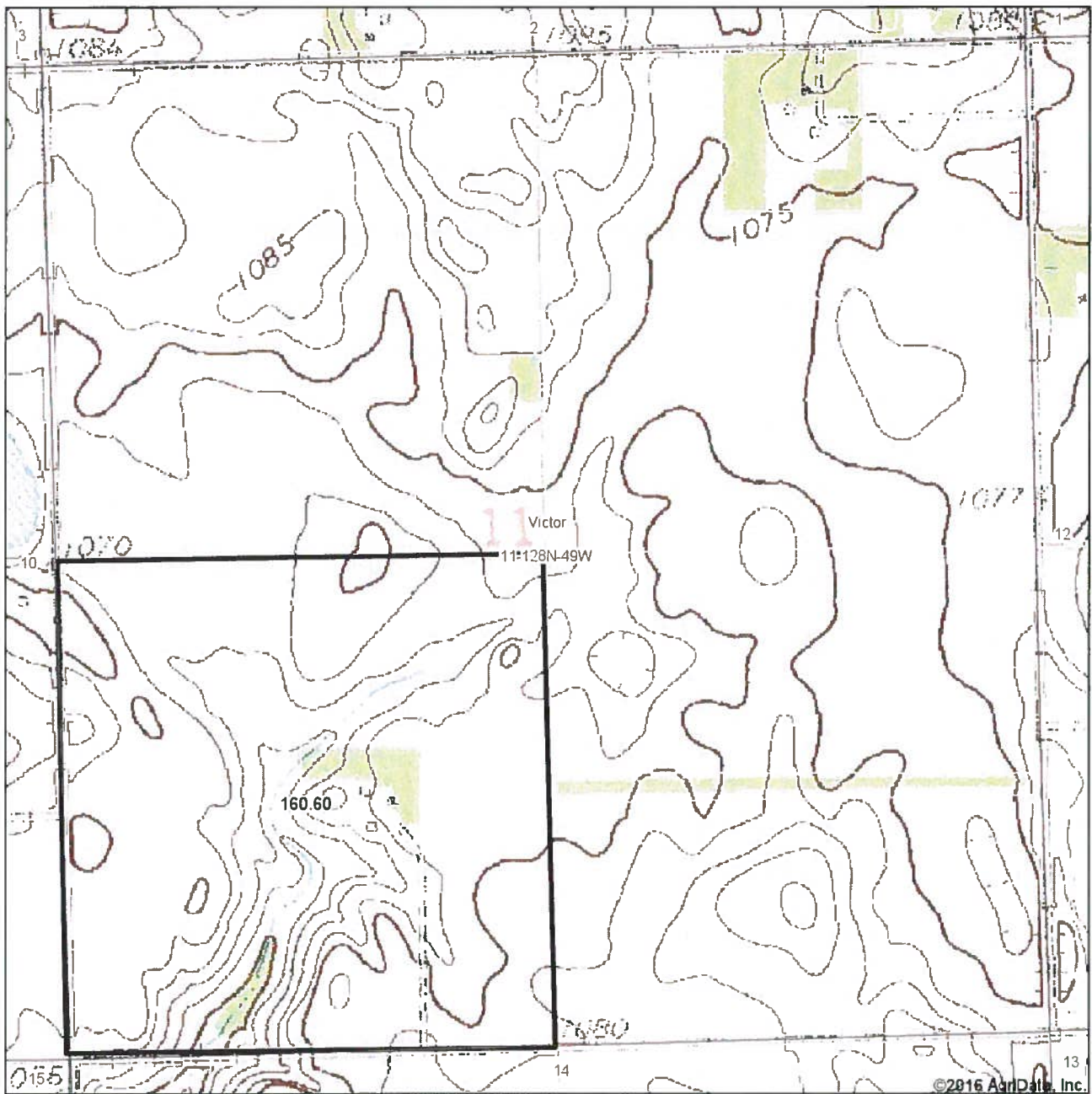
United States Department of Agriculture (USDA) Farm Service Agency (FSA) maps are for FSA Program administration only. This map does not represent a legal survey or reflect actual ownership; rather it depicts the information provided directly from the producer and/or National Agricultural Imagery Program (NAIP) imagery. The producer accepts the data 'as is' and assumes all risks associated with its use. USDA-FSA assumes no responsibility for actual or consequential damage incurred as a result of any user's reliance on this data outside FSA Programs. Wetland identifiers do not represent the size, shape, or specific determination of the area. Refer to your original determination (CPA-026 and attached maps) for exact boundaries and determinations or contact USDA Natural Resources Conservation Service (NRCS).

7-4

Blanca Nid

7-4259

Topography Map



map center: 45° 53' 7.32, -96° 45' 40.71

0ft 837ft 1673ft

11-128N-49W
Roberts County
South Dakota



9/30/2016

Maps Provided By

CUSTOMIZED ONLINE MAPPING
© AgriData, Inc. 2016 www.AgriDataInc.com

Field borders provided by Farm Service Agency as of 5/21/2008