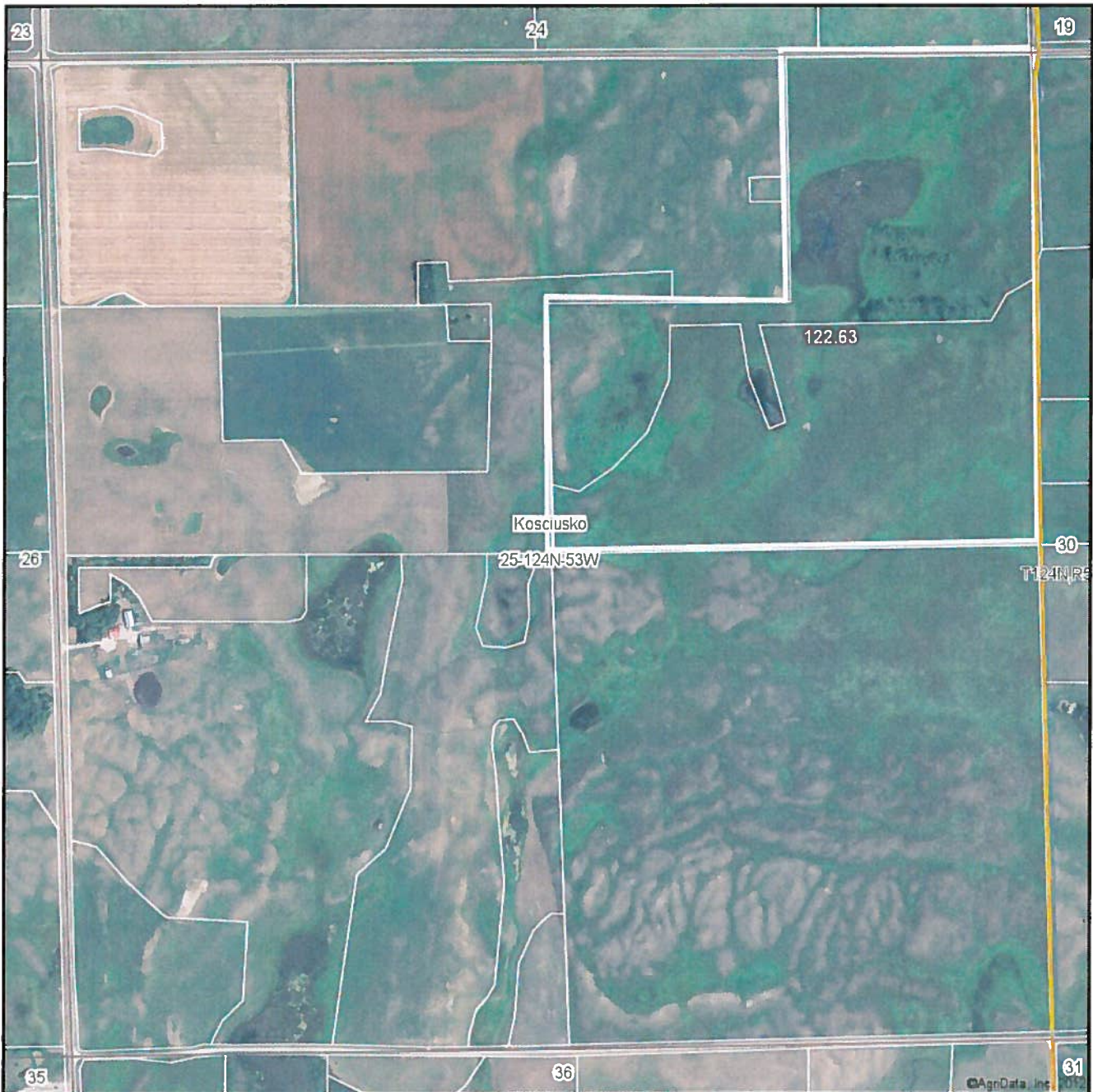


Aerial Map



map center: 45° 29' 35.5, 97° 14' 14.41
scale: 10184

Maps provided by:



©AgriData, Inc. 2012
www.AgriDataInc.com

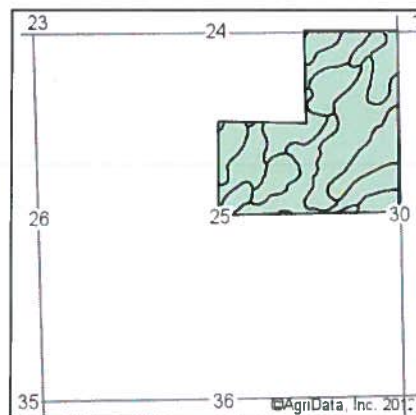
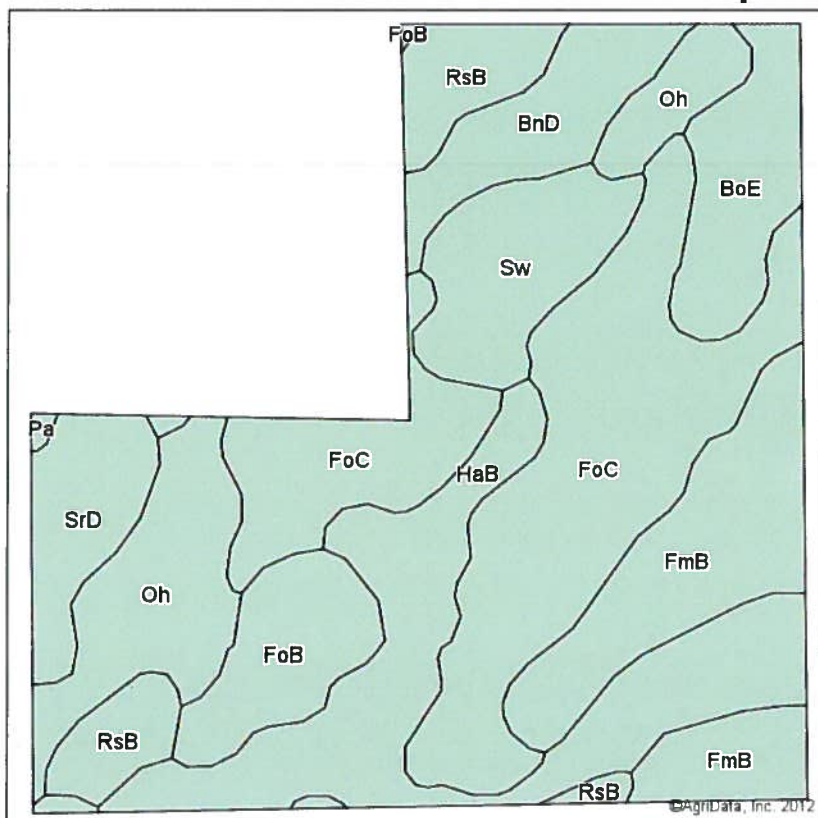
25-124N-53W
Day County
South Dakota



10/17/2012

Field borders provided by Farm Service Agency as of 5/21/2008. Aerial photography provided by Aerial Photography Field Office.

Soils Map



State: **South Dakota**
 County: **Day**
 Location: **25-124N-53W**
 Township: **Kosciusko**
 Acres: **122.6**
 Date: **10/17/2012**

Field borders provided by Farm Service Agency as of 5/21/2008.
 Soils data provided by USDA and NRCS.



Code	Soil Description	Acres	Percent of field	Non-Irr Class	Productivity Index	Corn	Soybeans
FoC	Forman-Buse-Aastad loams, 2 to 9 percent slopes	32.2	26.3%	IIIe	65	54	20
HaB	Hamerly loam, 2 to 6 percent slopes	20.1	16.4%	IIIs	65	60	19
FmB	Forman-Aastad loams, 1 to 6 percent slopes	15.3	12.5%	Ile	84	70	26
Oh	Oldham silty clay loam	12.5	10.2%	Vw	30	25	8
Sw	Southam silty clay loam	8.4	6.8%	VIIIw	10	4	1
BoE	Buse-Barnes loams, 9 to 40 percent slopes, very stony	7.3	6.0%	VIIIs	6		
RsB	Renshaw-Sioux complex, 2 to 9 percent slopes	7.3	5.9%	Vs	29	15	6
FoB	Forman-Buse-Aastad loams, 1 to 6 percent slopes	6.7	5.4%	Ile	79	64	23
BnD	Buse-Barnes loams, 9 to 20 percent slopes	6.6	5.4%	Ve	34	33	12
SrD	Sioux-Renshaw complex, 9 to 15 percent slopes	6	4.9%	VIe	18	5	2
Pa	Parnell silty clay loam	0.2	0.2%	Vw	34	25	9
Weighted Average					51.1	42	14.9