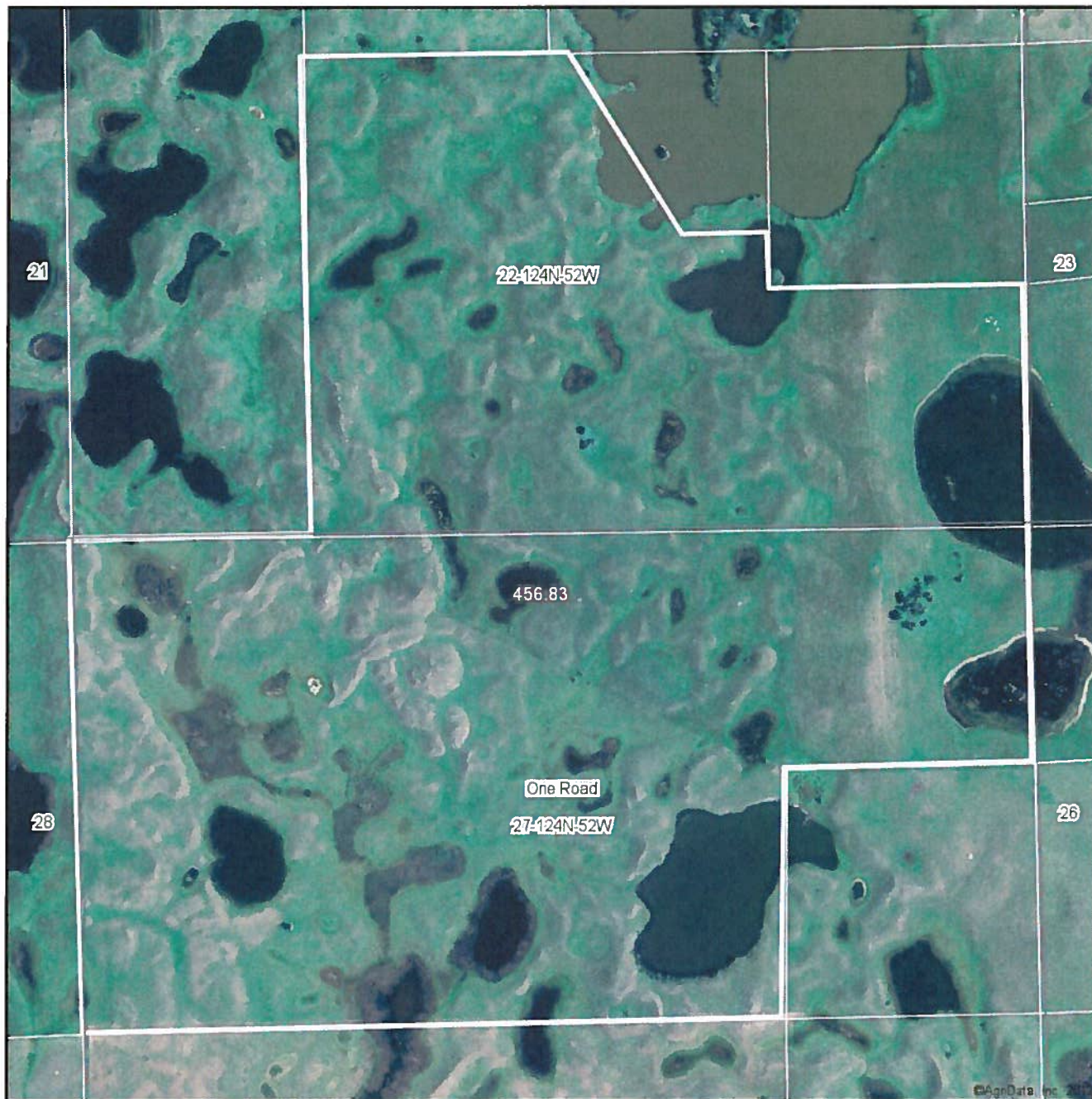


### Aerial Map



map center: 45° 30' 1.26, 97° 9' 17.06  
scale: 10391

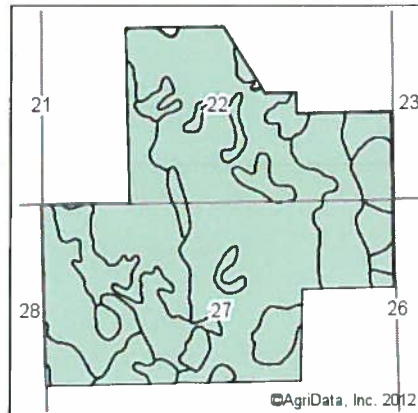
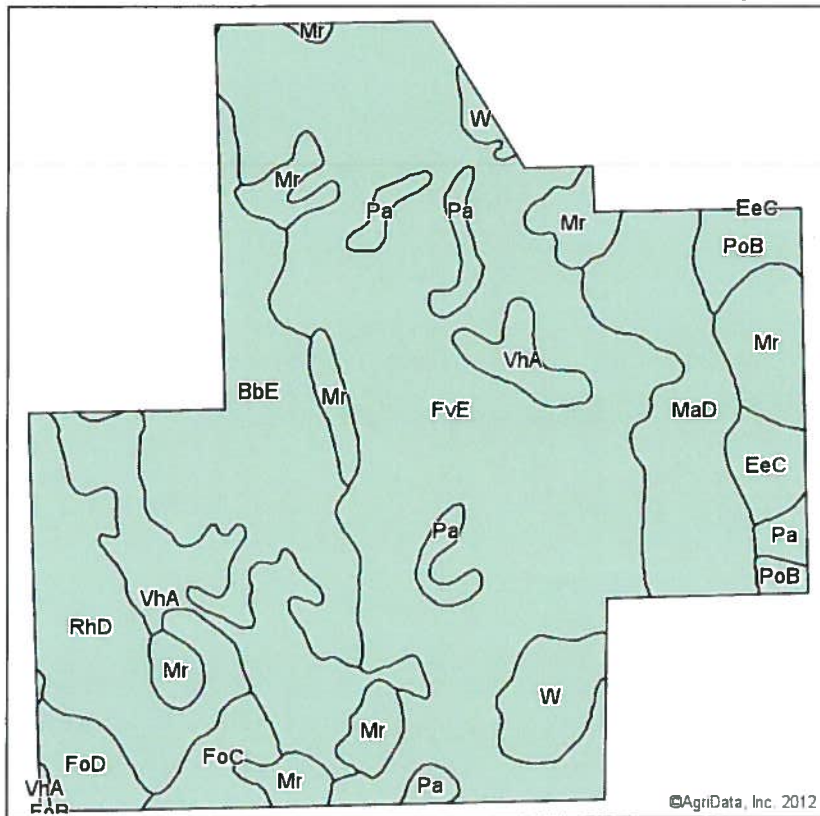
Maps provided by:  
  
CUSTOMIZED ONLINE MAPPING  
©AgriData, Inc. 2012  
www.AgriDataInc.com

**27-124N-52W**  
**Roberts County**  
**South Dakota**



Field borders provided by Farm Service Agency as of 5/21/2008. Aerial photography provided by Aerial Photography Field Office.

### Soils Map

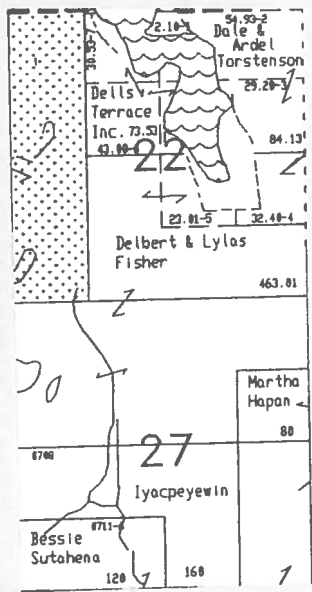


State: **South Dakota**  
 County: **Roberts**  
 Location: **27-124N-52W**  
 Township: **One Road**  
 Acres: **456.8**  
 Date: **10/17/2012**

Field borders provided by Farm Service Agency as of 5/21/2008.  
 Soils data provided by USDA and NRCS.



Code	Soil Description	Acres	Percent of field	Non-Irr Class	Productivity Index	Corn	Soybeans
FvE	Forman-Buse stony complex, 9 to 40 percent slopes	188.1	41.2%	Vlls	25	17	7
BbE	Barnes-Buse stony complex, 9 to 40 percent slopes	53.4	11.7%	Vlls	24	17	6
VhA	Vallers-Hamerly loams, 0 to 2 percent slopes	41.9	9.2%	llls	57	58	19
MaD	Maddock loamy fine sand, 6 to 25 percent slopes	38.7	8.5%	Vlle	11	22	9
Mr	Southam silty clay loam	38	8.3%	Vlllw	10	5	1
RhD	Renshaw-Sioux loams, 9 to 21 percent slopes	36.3	8.0%	Vls	20	6	2
W	Water	13.3	2.9%		0		
Pa	Parnell silty clay loam	13	2.8%	Vvw	31	29	11
PoB	Poinsett silt loam, 2 to 6 percent slopes	9.7	2.1%	lle	86	86	32
FoC	Forman-Aastad loams, 6 to 9 percent slopes	8.7	1.9%	llle	69	69	26
FoD	Forman-Aastad loams, 9 to 15 percent slopes	8.7	1.9%	llle	56	58	22
EeC	Eckman-Zell complex, 6 to 9 percent slopes	7	1.5%	llle	67	65	24
<b>Weighted Average</b>					<b>27.8</b>	<b>23.1</b>	<b>8.6</b>



54.59-2  
Dale & Ardel  
Tarstenson  
25.28-3  
2.10-4  
Dells Terrace  
Inc. 73.51  
51.10-0  
84.13-1  
22.01-5  
32.48-4  
Delbert & Lylas  
Fisher  
463.01

30  
27  
Martha Hapan  
80  
Iyacpeyewin  
Bessie Sutaheha  
120  
168  
1