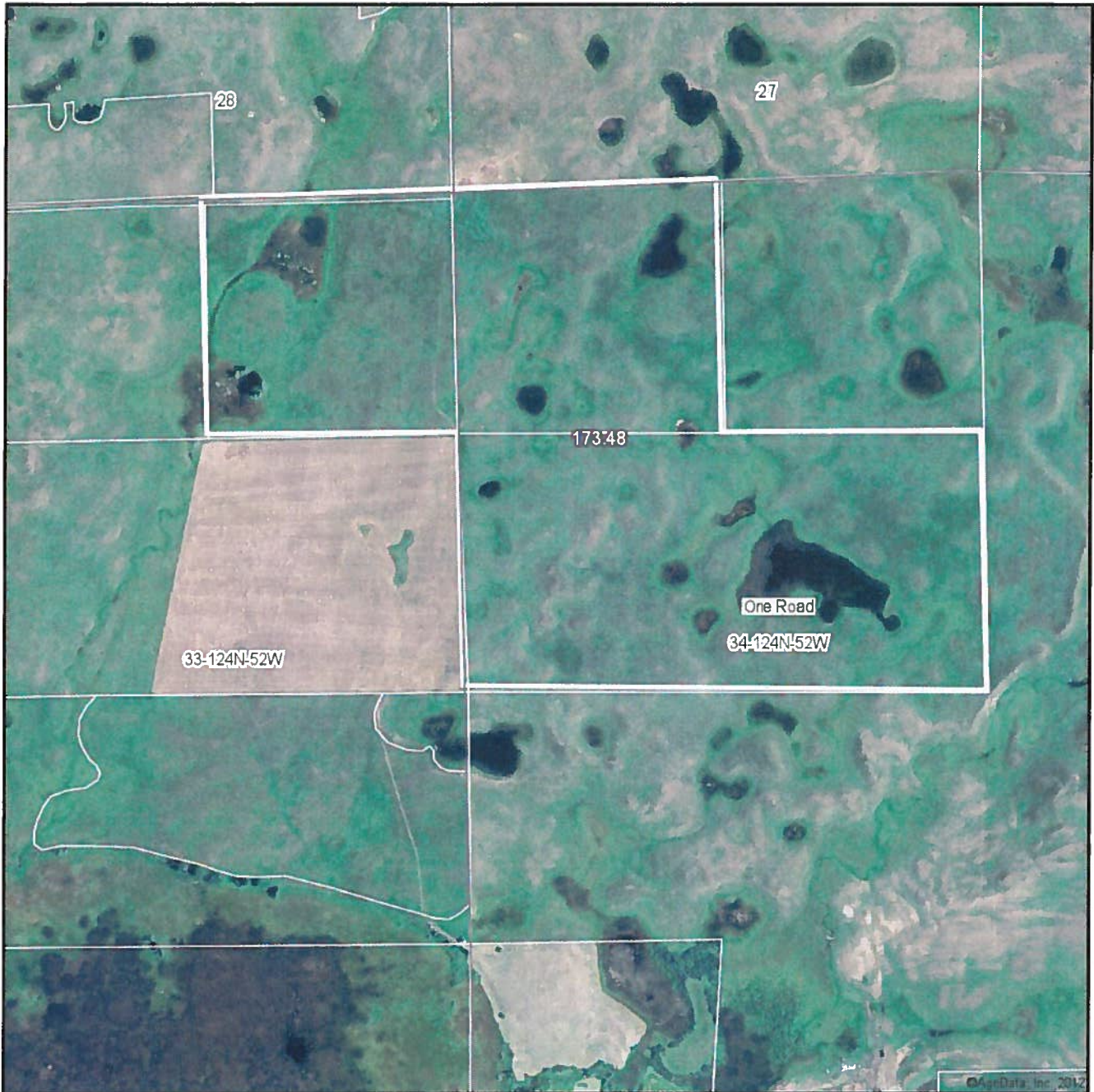


### Aerial Map



map center: 45° 28' 51.24, 97° 9' 47.42  
scale: 10181

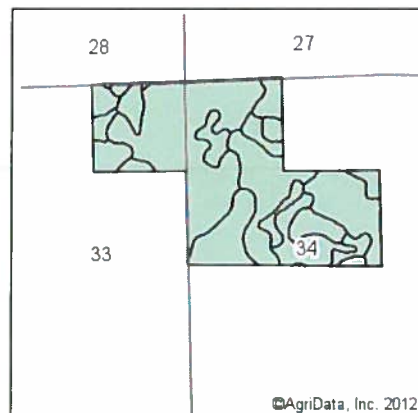
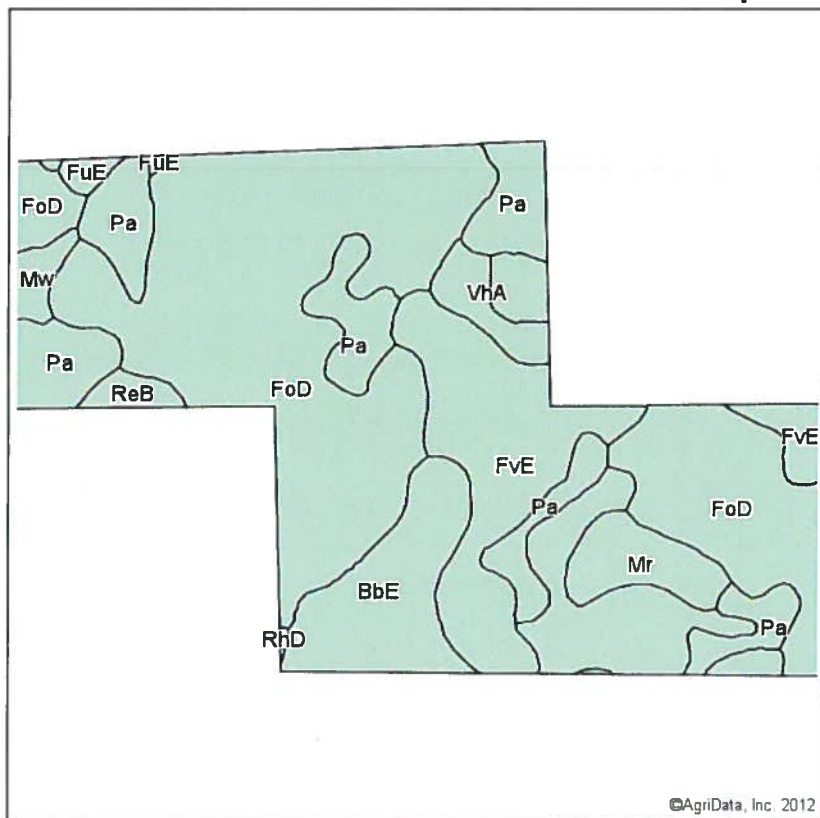
Maps provided by:  
  
CUSTOMIZED ONLINE MAPPING  
©AgriData, Inc. 2012  
www.AgriDataInc.com

**34-124N-52W**  
**Roberts County**  
**South Dakota**



Field borders provided by Farm Service Agency as of 5/21/2008. Aerial photography provided by Aerial Photography Field Office.

### Soils Map



State: **South Dakota**  
 County: **Roberts**  
 Location: **34-124N-52W**  
 Township: **One Road**  
 Acres: **173.5**  
 Date: **10/17/2012**

Field borders provided by Farm Service Agency as of 5/21/2008.  
 Soils data provided by USDA and NRCS.



Code	Soil Description	Acres	Percent of field	Non-Irr Class	Productivity Index	Corn	Soybeans
FoD	Forman-Aastad loams, 9 to 15 percent slopes	83.4	48.0%	IIIe	56	58	22
BbE	Barnes-Buse stony complex, 9 to 40 percent slopes	26.4	15.2%	VIIIs	24	17	6
Pa	Parnell silty clay loam	25	14.4%	Vw	31	29	11
FvE	Forman-Buse stony complex, 9 to 40 percent slopes	24	13.9%	VIIIs	25	17	7
Mr	Southam silty clay loam	5.9	3.4%	VIIIw	10	5	1
VhA	Vallers-Hamerly loams, 0 to 2 percent slopes	3.6	2.1%	IIIs	57	58	19
Mw	Marysland silt loam, wet	2.2	1.3%	IVw	48	46	14
ReB	Renshaw loam, 3 to 9 percent slopes	1.7	1.0%	IVe	39	23	9
FuE	Forman-Buse loams, 15 to 25 percent slopes	1.1	0.6%	VIe	29	22	8
FoC	Forman-Aastad loams, 6 to 9 percent slopes	0.1	0.1%	IIIe	69	69	26
RhD	Renshaw-Sioux loams, 9 to 21 percent slopes	0.1	0.1%	VIIs	20	6	2
<b>Weighted Average</b>					<b>41.3</b>	<b>39.4</b>	<b>14.8</b>