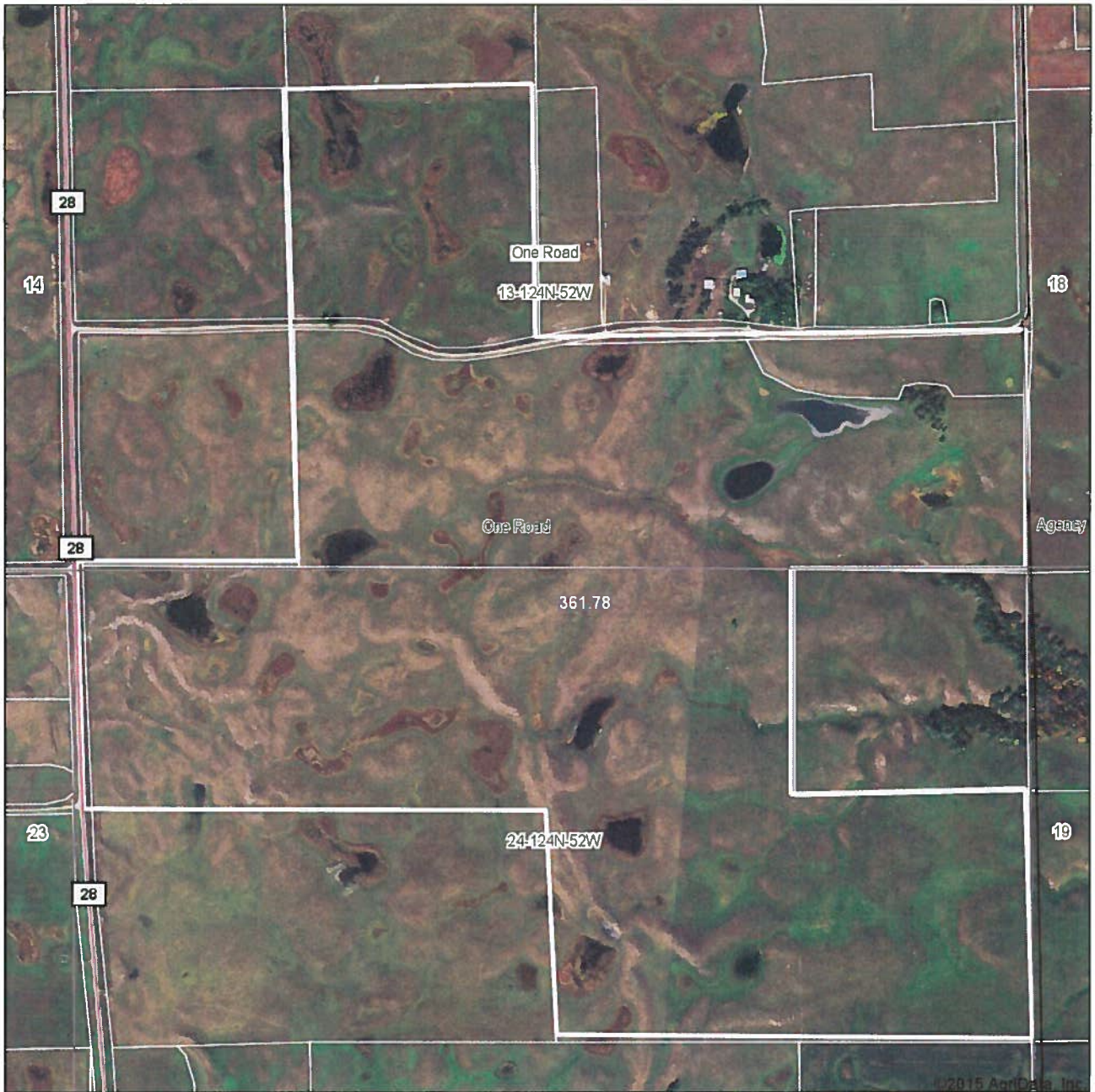


Aerial Map



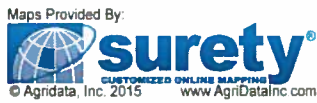
©2015 AgriData, Inc.

map center: 45° 30' 55.62, 97° 6' 48.35
scale: 9858

13-124N-52W
Roberts County
South Dakota

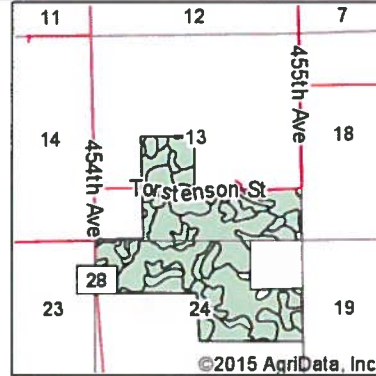
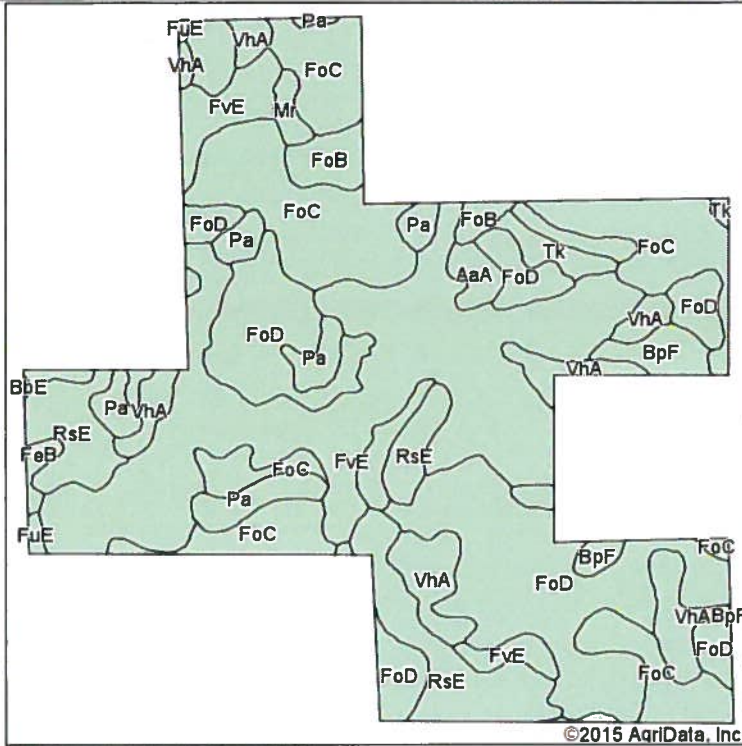


9/29/2015



Field borders provided by Farm Service Agency as of 5/21/2008

Soil Map



State: **South Dakota**
 County: **Roberts**
 Location: **13-124N-52W**
 Township: **One Road**
 Acres: **361.78**
 Date: **9/29/2015**



Soils data provided by USDA and NRCS.

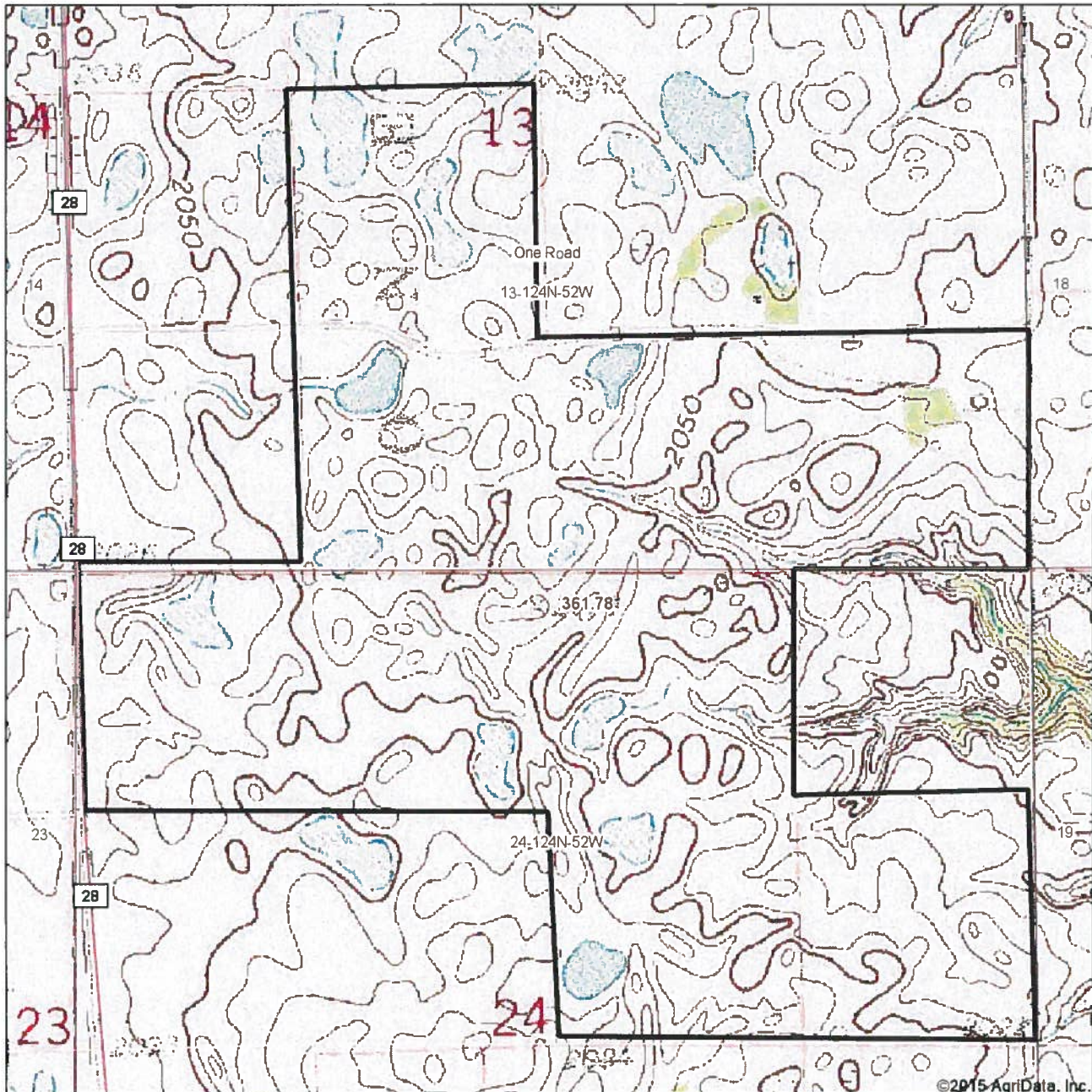
Area Symbol: SD109, Soil Area Version: 15

Code	Soil Description	Acres	Percent of field	Non-Irr Class *c	Productivity Index	Corn	Soybeans
FvE	Forman-Buse stony complex, 9 to 40 percent slopes	100.84	27.9%	Vlls	25	17	7
FoD	Forman-Aastad loams, 9 to 15 percent slopes	82.34	22.8%	IVe	56	58	22
FoC	Forman-Aastad loams, 6 to 9 percent slopes	72.94	20.2%	IIIe	69	69	26
RsE	Renshaw-Sioux stony loams, 9 to 40 percent slopes	31.88	8.8%	Vlls	4		
VhA	Vallers-Ham eryl loams, 0 to 2 p percent slopes	27.84	7.7%	IVw	57	58	19
Pa	Parnell silty clay loam	15.12	4.2%	Vw	31	29	11
BpF	Buse-Forman loams, 20 to 40 percent slopes	7.58	2.1%	Vllle	20	6	2
FoB	Forman-Aastad loams, 2 to 6 percent slopes	6.92	1.9%	IIe	82	79	30
Mr	Southam silty clay loam	5.97	1.7%	Vlllw	10	5	1
Tk	Tonka silt loam	4.20	1.2%	IVw	60	56	21
AaA	Aastad loam, 0 to 2 percent slopes	3.28	0.9%	Is	92	92	34
FeB	Fordville-Renshaw loams, 3 to 6 per cent slopes	1.62	0.4%	IIe	49	40	15
FuE	Forman-Buse loams, 15 to 25 percent slopes	1.08	0.3%	VIe	29	22	8
BbE	Barnes-Buse stony complex, 9 to 40 percent slopes	0.17	0.0%	Vlls	24	17	6
Weighted Average					43.7	41	15.4

*c: Using Capabilities Class Dominant Condition Aggregation Method

Soils data provided by USDA and NRCS.

Topography Map



©2015 AgriData, Inc.

map center: 45° 30' 55.62, 97° 6' 48.35
scale: 9858

13-124N-52W
Roberts County
South Dakota



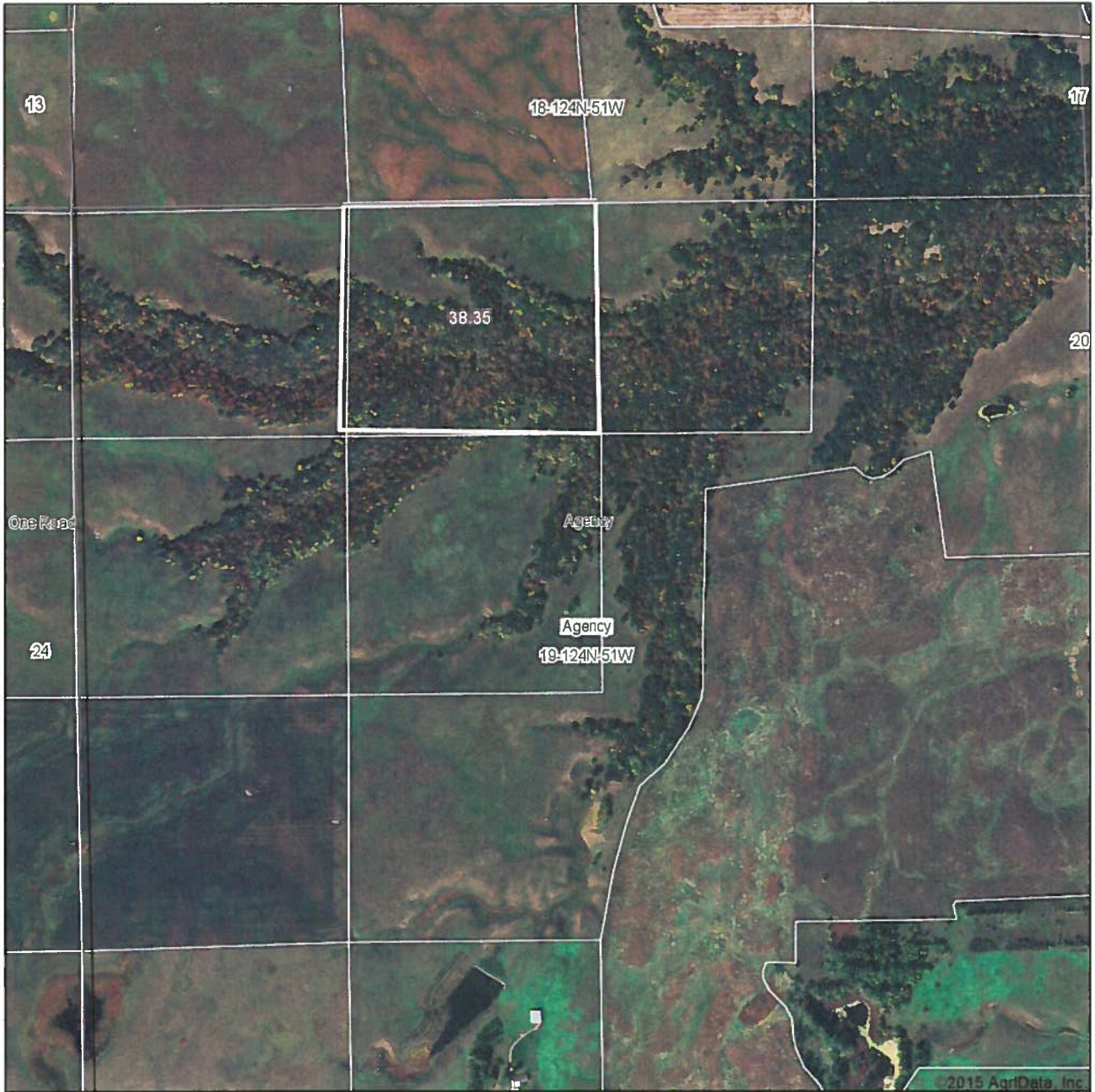
9/29/2015

Maps Provided By

CUSTOMIZED ONLINE MAPPING
© AgriData, Inc. 2015 www.AgridataInc.com

Field borders provided by Farm Service Agency as of 5/21/2008

Aerial Map



map center: 45° 30' 35.47, 97° 5' 36.04
scale: 9548

19-124N-51W
Roberts County
South Dakota

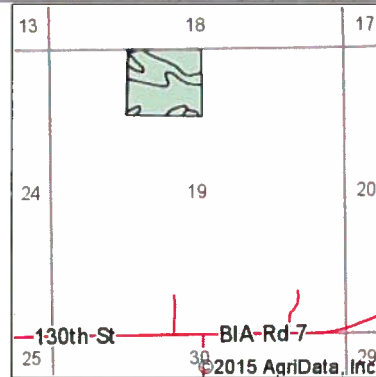
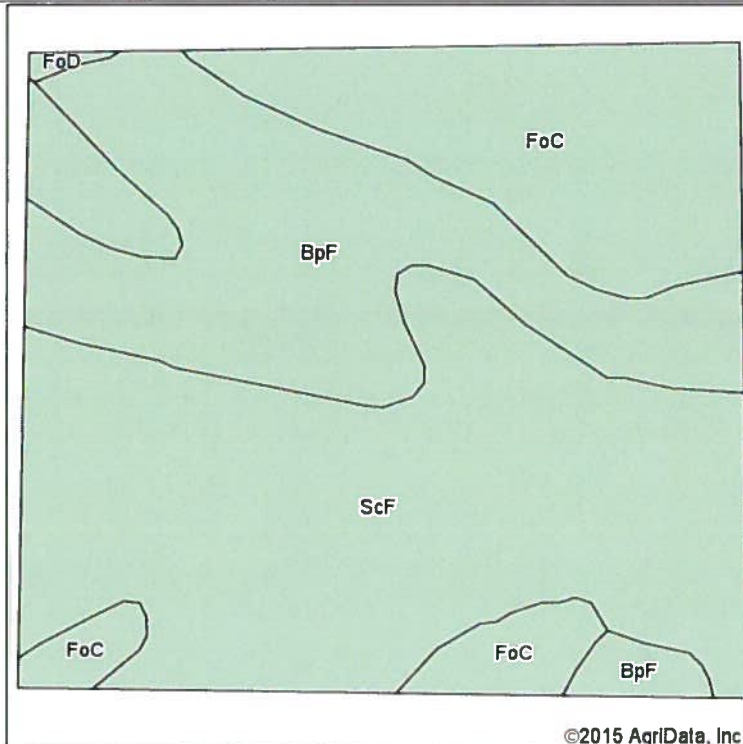


9/29/2015



Field borders provided by Farm Service Agency as of 5/21/2008.

Soil Map



State: **South Dakota**
 County: **Roberts**
 Location: **19-124N-51W**
 Township: **Agency**
 Acres: **38.35**
 Date: **9/29/2015**

Soils data provided by USDA and NRCS.

©2015 AgriData, Inc.



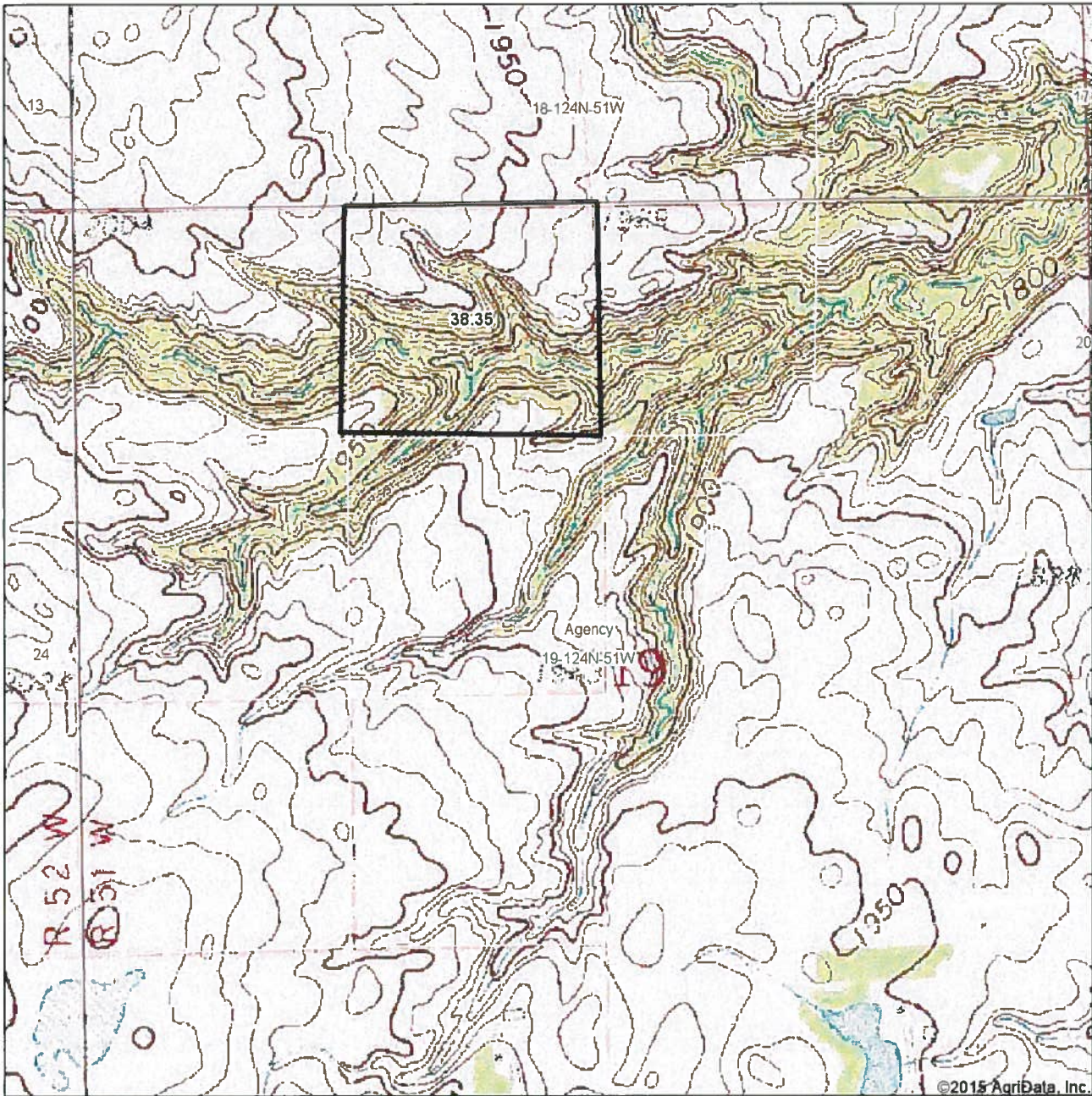
Area Symbol: SD109, Soil Area Version: 15

Code	Soil Description	Acres	Percent of field	Non-Irr Class *c	Productivity Index	Corn	Soybeans
ScF	Sieche loam, 15 to 40 percent slopes	17.81	46.4%	Vle	16	12	4
BpF	Buse-Forman loams, 20 to 40 percent slopes	10.88	28.4%	Vlle	20	6	2
FoC	Forman-Aastad loams, 6 to 9 percent slopes	9.55	24.9%	Ille	69	69	26
FoD	Forman-Aastad loams, 9 to 15 percent slopes	0.11	0.3%	IVe	56	58	22
Weighted Average					30.4	24.6	9

*c: Using Capabilities Class Dominant Condition Aggregation Method

Soils data provided by USDA and NRCS.

Topography Map



©2015 AgriData, Inc.

map center: 45° 30' 35.47, 97° 5' 36.04
scale: 9548

19-124N-51W
Roberts County
South Dakota



9/29/2015



Field borders provided by Farm Service Agency as of 5/21/2008