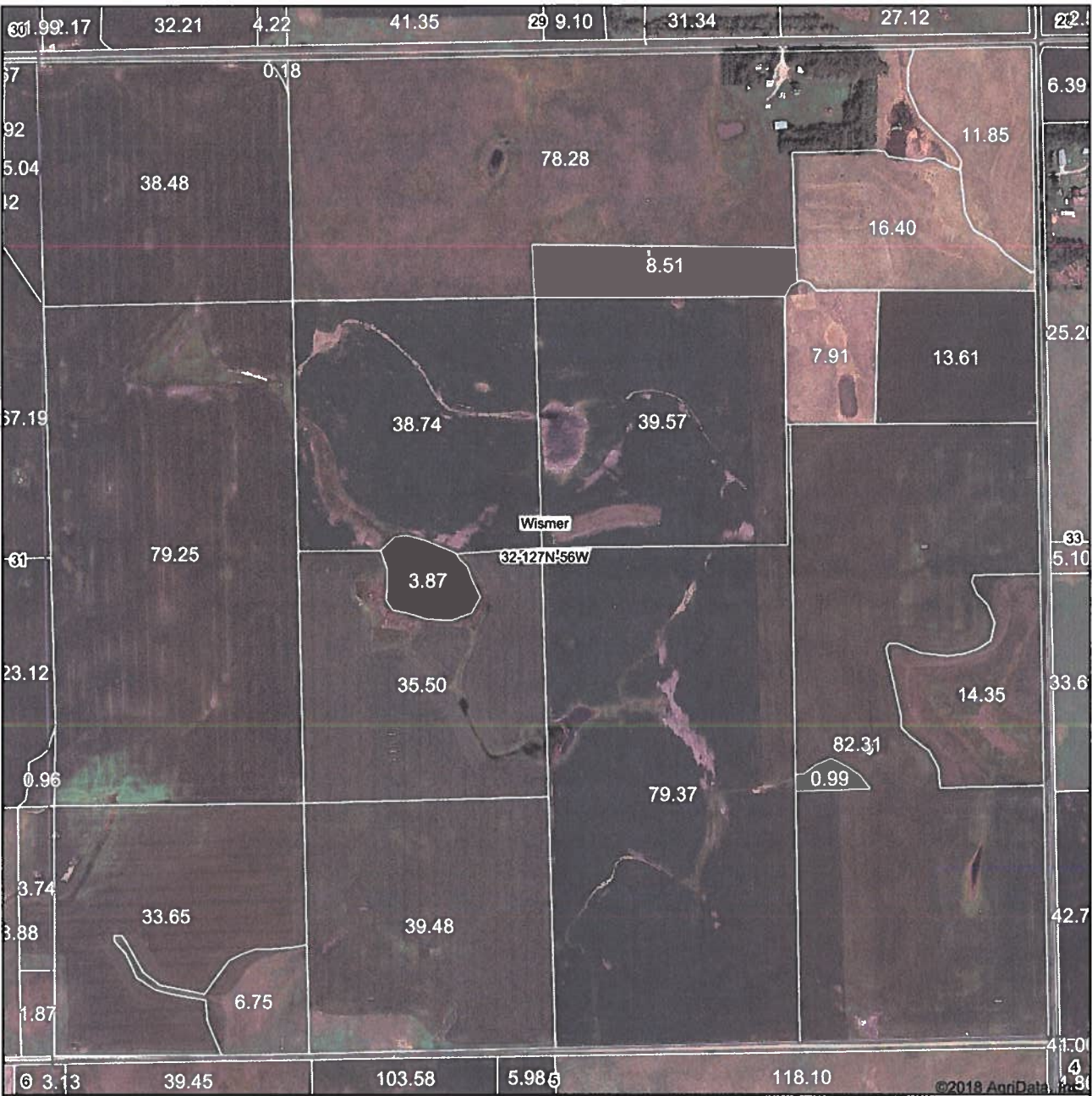


Aerial Map



0ft 820ft 1640ft

410ft 410ft 820ft 410ft

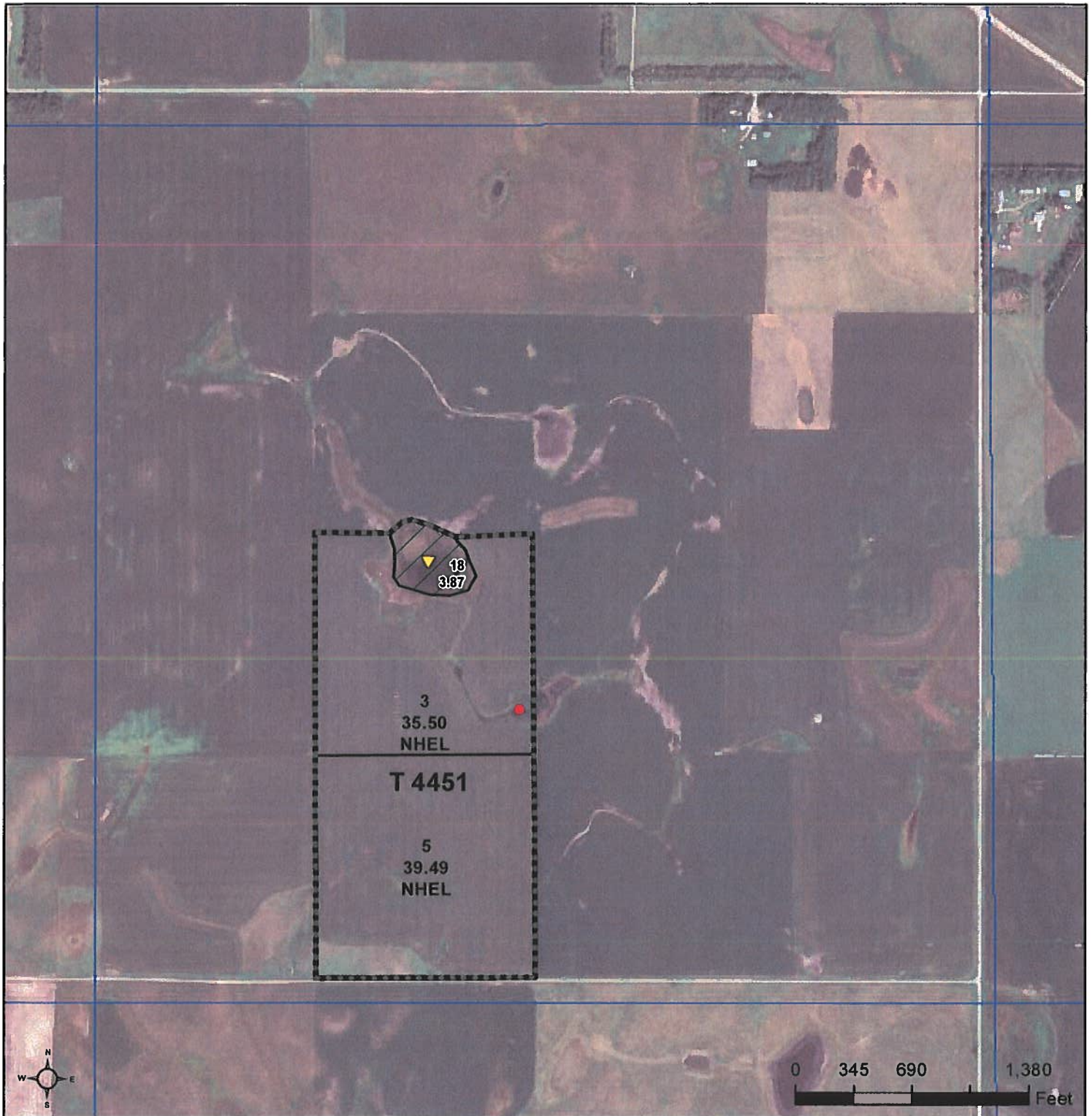
 **surety**[®]
CUSTOMIZED ONLINE MAPPING
© AgriData, Inc. 2018 www.AgrIDataInc.com

Field borders provided by Farm Service Agency as of 5/21/2008.



United States
Department of
Agriculture

Marshall County, South Dakota



Common Land Unit

	Tract Boundary
	Non-Cropland
	Cropland
	PLSS

Wetland Determination Identifiers

- Restricted Use
- Limited Restrictions
- Exempt from Conservation
- Compliance Provisions

Tract Cropland Total: 74.99 acres

2018 Program Year

Map Created March 14, 2018

Farm 5189

Tract 4451

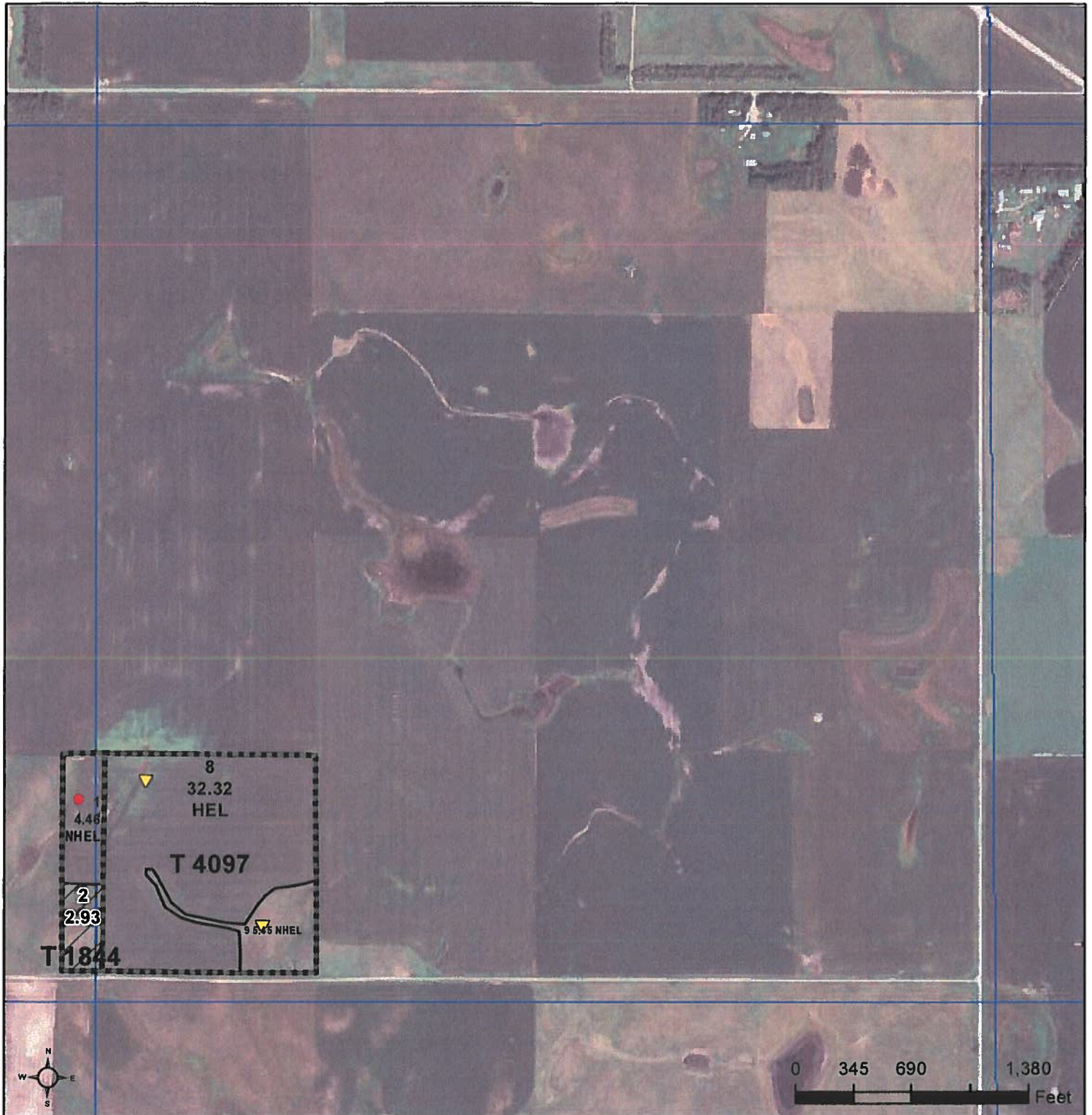
32-127N-56W

United States Department of Agriculture (USDA) Farm Service Agency (FSA) maps are for FSA Program administration only. This map does not represent a legal survey or reflect actual ownership; rather it depicts the information provided directly from the producer and/or National Agricultural Imagery Program (NAIP) imagery. The producer accepts the data 'as is' and assumes all risks associated with its use. USDA-FSA assumes no responsibility for actual or consequential damage incurred as a result of any user's reliance on this data outside FSA Programs. Wetland identifiers do not represent the size, shape, or specific determination of the area. Refer to your original determination (CPA-026 and attached maps) for exact boundaries and determinations or contact USDA Natural Resources Conservation Service (NRCS).



United States
Department of
Agriculture

Marshall County, South Dakota



Common Land Unit

	Non-Cropland
	Cropland

Tract Boundary

	Tract Boundary
	PLSS

Wetland Determination Identifiers

- Restricted Use
- Limited Restrictions
- Exempt from Conservation
- Compliance Provisions

United States Department of Agriculture (USDA) Farm Service Agency (FSA) maps are for FSA Program administration only. This map does not represent a legal survey or reflect actual ownership; rather it depicts the information provided directly from the producer and/or National Agricultural Imagery Program (NAIP) imagery. The producer accepts the data 'as is' and assumes all risks associated with its use. USDA-FSA assumes no responsibility for actual or consequential damage incurred as a result of any user's reliance on this data outside FSA Programs. Wetland identifiers do not represent the size, shape, or specific determination of the area. Refer to your original determination (CPA-026 and attached maps) for exact boundaries and determinations or contact USDA Natural Resources Conservation Service (NRCS).

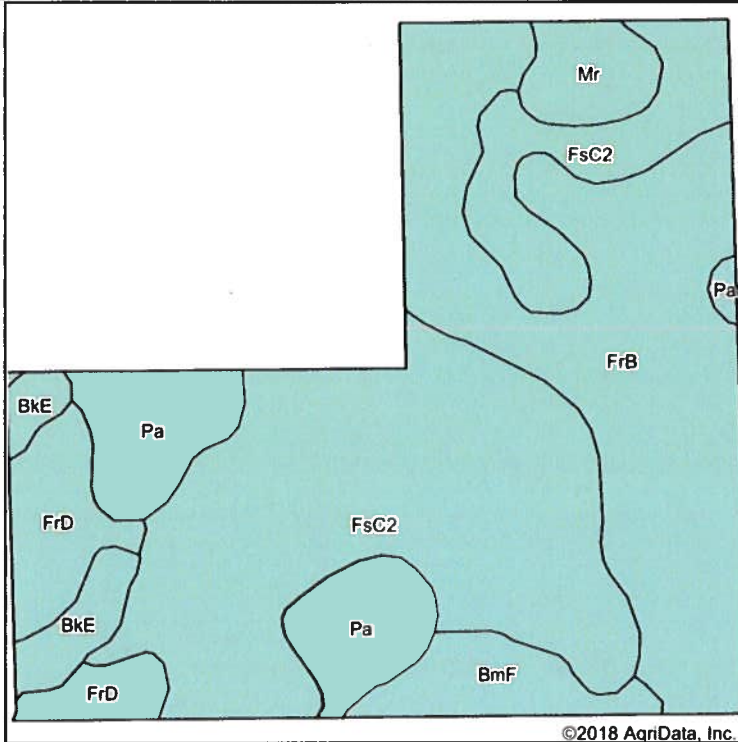
2018 Program Year

Map Created March 13, 2018

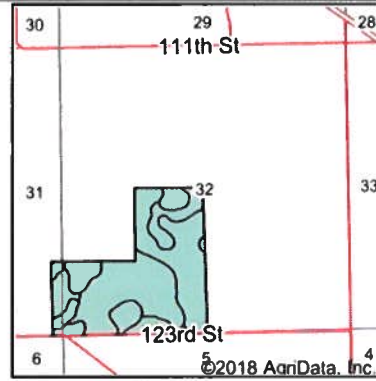
Farm 4375

32-127N-56W

Soils Map



Soils data provided by USDA and NRCS.



State: **South Dakota**
 County: **Marshall**
 Location: **32-127N-56W**
 Township: **Wisner**
 Acres: **127.16**
 Date: **10/25/2018**

Maps Provided By



surety
 CUSTOMIZED ONLINE MAPPING
 © AgriData, Inc. 2018 www.AgrDataInc.com



Area Symbol: SD091, Soil Area Version: 19

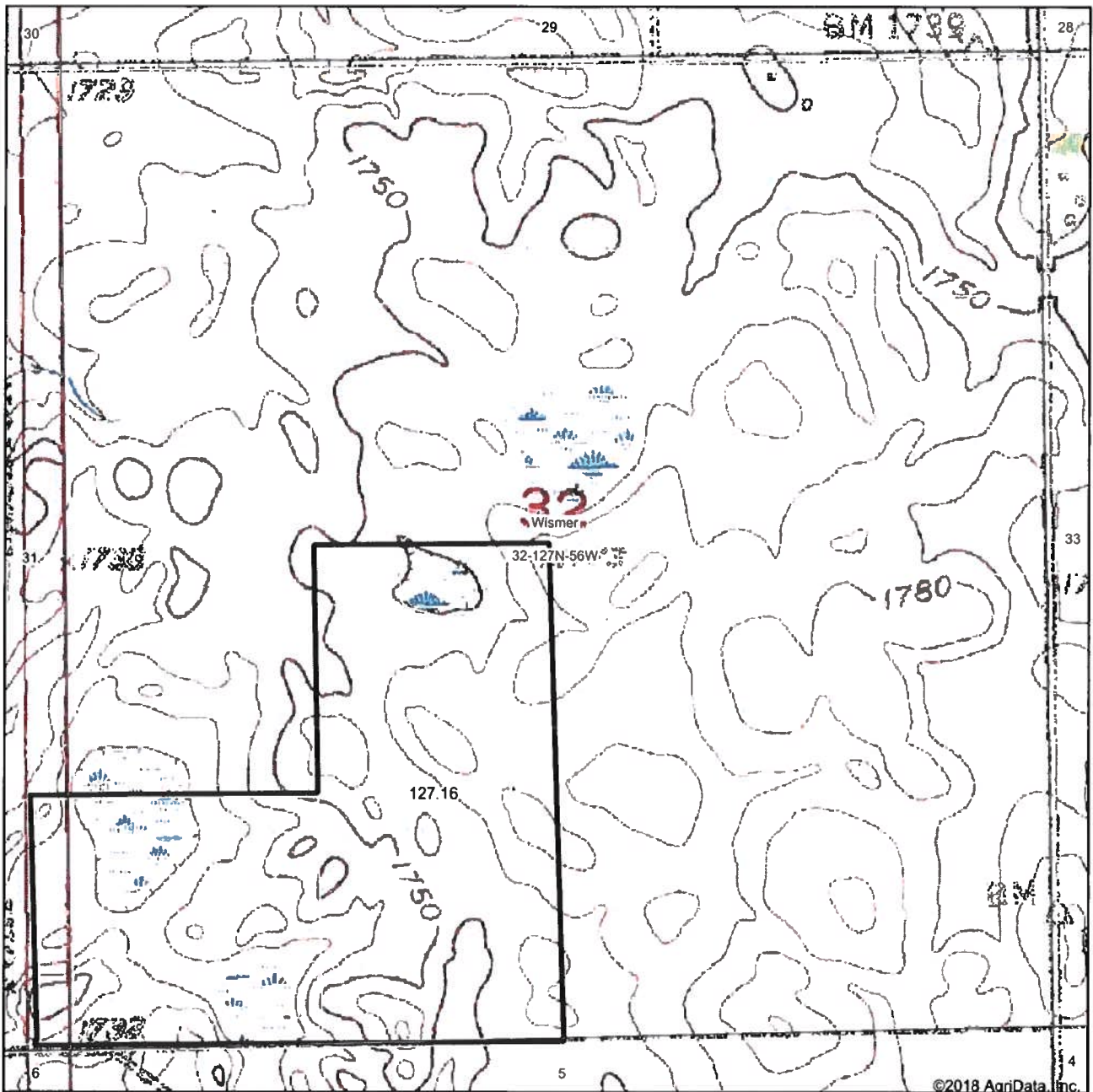
Code	Soil Description	Acres	Percent of field	Non-Irr Class *c	Productivity Index	Corn	Soybeans	*n NCCPI Soybeans
FsC2	Forman-Buse loams, 6 to 9 percent slopes, eroded	52.90	41.6%	IIIe	61	49	18	46
FrB	Forman-Aastad loams, 2 to 6 percent slopes	39.59	31.1%	Ile	81	67	26	57
Pa	Parnell silty clay loam	12.25	9.6%	Vw	30	24	9	2
FrD	Forman-Aastad loams, 9 to 15 percent slopes	8.45	6.6%	IVe	53	49	19	54
BmF	Buse-Forman stony complex, 9 to 40 percent slopes	5.60	4.4%	Vlls	10	2	1	9
Mr	Southam silty clay loam, 0 to 1 percent slopes	4.21	3.3%	Vlllw	10			2
BkE	Buse-Forman loams, 9 to 21 percent slopes	4.16	3.3%	Vle	27	17	6	48
Weighted Average					58.7	47.5	18	*n 42.7

*n: The aggregation method is "Weighted Average using major components"

*c: Using Capabilities Class Dominant Condition Aggregation Method

Soils data provided by USDA and NRCS

Topography Map



map center: 45° 46' 7.14, -97° 34' 38.32

0ft 837ft 1673ft

32-127N-56W
Marshall County
South Dakota

Maps Provided By:
 **surety**
CUSTOMIZED ONLINE MAPPING
© AgriData, Inc. 2018 www.AgridataInc.com



10/25/2018

Field borders provided by Farm Service Agency as of 5/21/2008.