






- Common Land Unit**
-  Rangeland
 -  Tract Boundary
 -  PLSS
 -  Cropland

Wetland Determination Identifiers

-  Restricted Use
-  Limited Restrictions
-  Exempt from Conservation Compliance Provisions



2016 Program Year

Map Created May 09, 2016

Farm 1168

12 -122N -55W

United States Department of Agriculture (USDA) Farm Service Agency (FSA) maps are for FSA Program administration only. This map does not represent a legal survey or reflect actual ownership; rather it depicts the information provided directly from the producer and/or National Agricultural Imagery Program (NAIP) imagery. The producer accepts the data 'as is' and assumes all risks associated with its use. USDA-FSA assumes no responsibility for actual or consequential damage incurred as a result of any user's reliance on this data outside FSA Programs. Wetland identifiers do not represent the size, shape, or specific determination of the area. Refer to your original determination (CPA-026 and attached maps) for exact boundaries and determinations or contact USDA Natural Resources Conservation Service (NRCS).



Common Land Unit
 Other Ag
 Cropland
 Rangeland
 Tract Boundary

Wetland Determination Identifiers

- Restricted Use
- ▼ Limited Restrictions
- Exempt from Conservation Compliance Provisions



2016 Program Year

Map Created May 09, 2016

Farm 1168




7 -122N -54W

United States Department of Agriculture (USDA) Farm Service Agency (FSA) maps are for FSA Program administration only. This map does not represent a legal survey or reflect actual ownership; rather it depicts the information provided directly from the producer and/or National Agricultural Imagery Program (NAIP) imagery. The producer accepts the data 'as is' and assumes all risks associated with its use. USDA-FSA assumes no responsibility for actual or consequential damage incurred as a result of any user's reliance on this data outside FSA Programs. Wetland identifiers do not represent the size, shape, or specific determination of the area. Refer to your original determination (CPA-026 and attached maps) for exact boundaries and determinations or contact USDA Natural Resources Conservation Service (NRCS).



- Common Land Unit**
-  Rangeland
 -  Tract Boundary
 -  PLSS
 -  Cropland

Wetland Determination Identifiers

-  Restricted Use
-  Limited Restrictions
-  Exempt from Conservation Compliance Provisions



2016 Program Year

Map Created May 09, 2016

Farm 1168

12 -122N -55W

United States Department of Agriculture (USDA) Farm Service Agency (FSA) maps are for FSA Program administration only. This map does not represent a legal survey or reflect actual ownership, rather it depicts the information provided directly from the producer and/or National Agricultural Imagery Program (NAIP) imagery. The producer accepts the data 'as is' and assumes all risks associated with its use. USDA-FSA assumes no responsibility for actual or consequential damage incurred as a result of any user's reliance on this data outside FSA Programs. Wetland identifiers do not represent the size, shape, or specific determination of the area. Refer to your original determination (CPA-026 and attached maps) for exact boundaries and determinations or contact USDA Natural Resources Conservation Service (NRCS).



United States
Department of
Agriculture

Day County, South Dakota



Common Land Unit
 Other Ag
 Cropland
 Rangeland
 Tract Boundary

Wetland Determination Identifiers

- Restricted Use
- ▼ Limited Restrictions
- Exempt from Conservation Compliance Provisions



2016 Program Year

Map Created May 09, 2016

Farm 1168

7 -122N -54W

United States Department of Agriculture (USDA) Farm Service Agency (FSA) maps are for FSA Program administration only. This map does not represent a legal survey or reflect actual ownership; rather it depicts the information provided directly from the producer and/or National Agricultural Imagery Program (NAIP) imagery. The producer accepts the data 'as is' and assumes all risks associated with its use. USDA-FSA assumes no responsibility for actual or consequential damage incurred as a result of any user's reliance on this data outside FSA Programs. Wetland identifiers do not represent the size, shape, or specific determination of the area. Refer to your original determination (CPA-026 and attached maps) for exact boundaries and determinations or contact USDA Natural Resources Conservation Service (NRCS).

Aerial Map



map center: 45° 24' 7.58, -97° 22' 4.68

0ft 1929ft 3858ft

Maps Provided By:

CUSTOMIZED ONLINE MAPPING
© AgriData, Inc. 2016 www.AgriDataInc.com

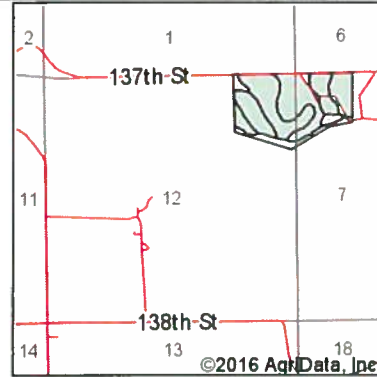
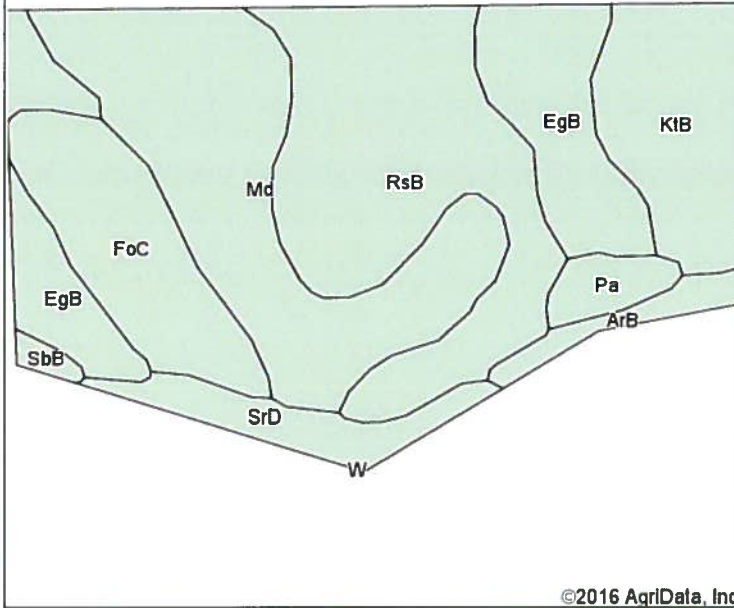
1-122N-55W
Day County
South Dakota



10/27/2016

Field borders provided by Farm Service Agency as of 5/21/2008.

Soils Map



State: **South Dakota**
 County: **Day**
 Location: **1-122N-55W**
 Township: **Racine**
 Acres: **76.62**
 Date: **10/27/2016**

Maps Provided By:



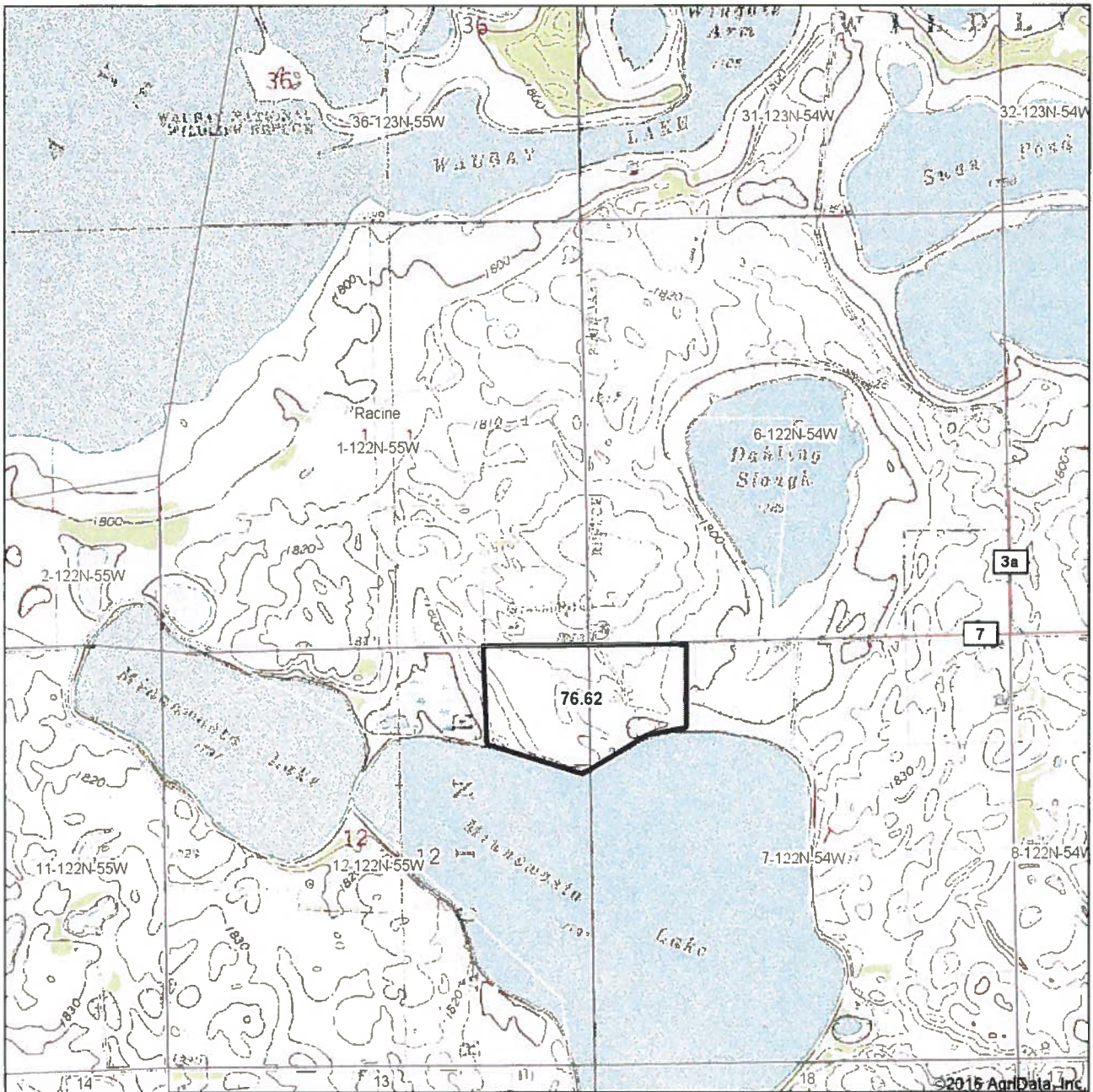
Soils data provided by USDA and NRCS.

Area Symbol: SD037, Soil Area Version: 21

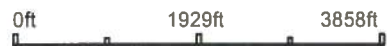
Code	Soil Description	Acres	Percent of field	Non-Irr Class *c	Productivity Index	Corn	Soybeans
RsB	Renshaw-Sioux complex, 2 to 6 percent slopes	21.07	27.5%	IVs	34		
Md	Marysland-Divide loams	19.21	25.1%	IVw	51	47	15
EgB	Egeland-Embsen complex, 2 to 6 percent slopes	10.40	13.6%	IIIe	56	48	18
FoC	Forman-Buse-Aastad loams, 2 to 9 percent slopes	9.08	11.9%	IIIe	65	54	20
KtB	Kranzburg-Forman complex, 2 to 6 percent slopes	8.80	11.5%	Ile	83	68	26
SrD	Sioux-Renshaw complex, 9 to 15 percent slopes	3.92	5.1%	VIIs	18	5	2
Pa	Parnell silty clay loam	1.83	2.4%	Vw	34	25	9
ArB	Arvilla sandy loam, 2 to 6 percent slopes	1.80	2.3%	IVs	23	17	7
SbB	Sioux gravelly loamy sand, 2 to 6 percent slopes	0.51	0.7%	VIIs	18	9	4
Weighted Average					49.4	33.8	12.1

*c: Using Capabilities Class Dominant Condition Aggregation Method

Topography Map



map center: 45° 24' 7.58, -97° 22' 4.68



1-122N-55W
Day County
South Dakota



10/27/2016

Field borders provided by Farm Service Agency as of 5/21/2008