

### Aerial Map



map center: 45° 46' 8.16, 97° 35' 54.05  
scale: 22102

Maps Provided By:  
  
© AgriData, Inc. 2014 www.AgrDataInc.com

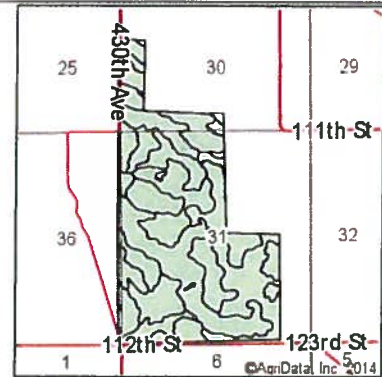
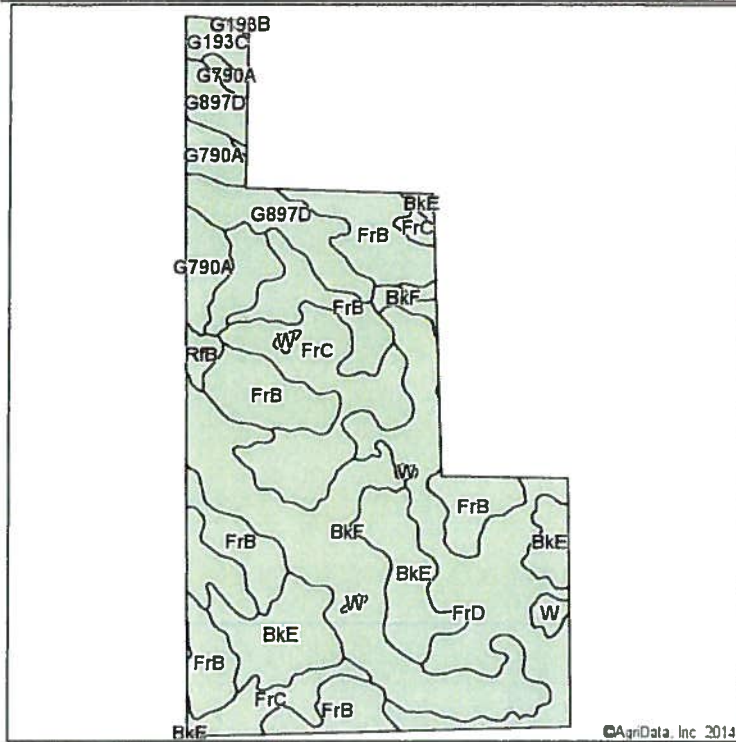
**31-127N-56W**  
**Marshall County**  
**South Dakota**



10/28/2014

Field borders provided by Farm Service Agency as of 5/21/2008. Aerial photography provided by Aerial Photography Field Office.

### Soil Map



State: South Dakota  
 County: Marshall  
 Location: 31-127N-56W  
 Township: Wismer



Maps Provided By:  
**surety**  
 CUSTOMIZED ONLINE MAPPING  
 © AgriData, Inc. 2014 www.AgriDataInc.com

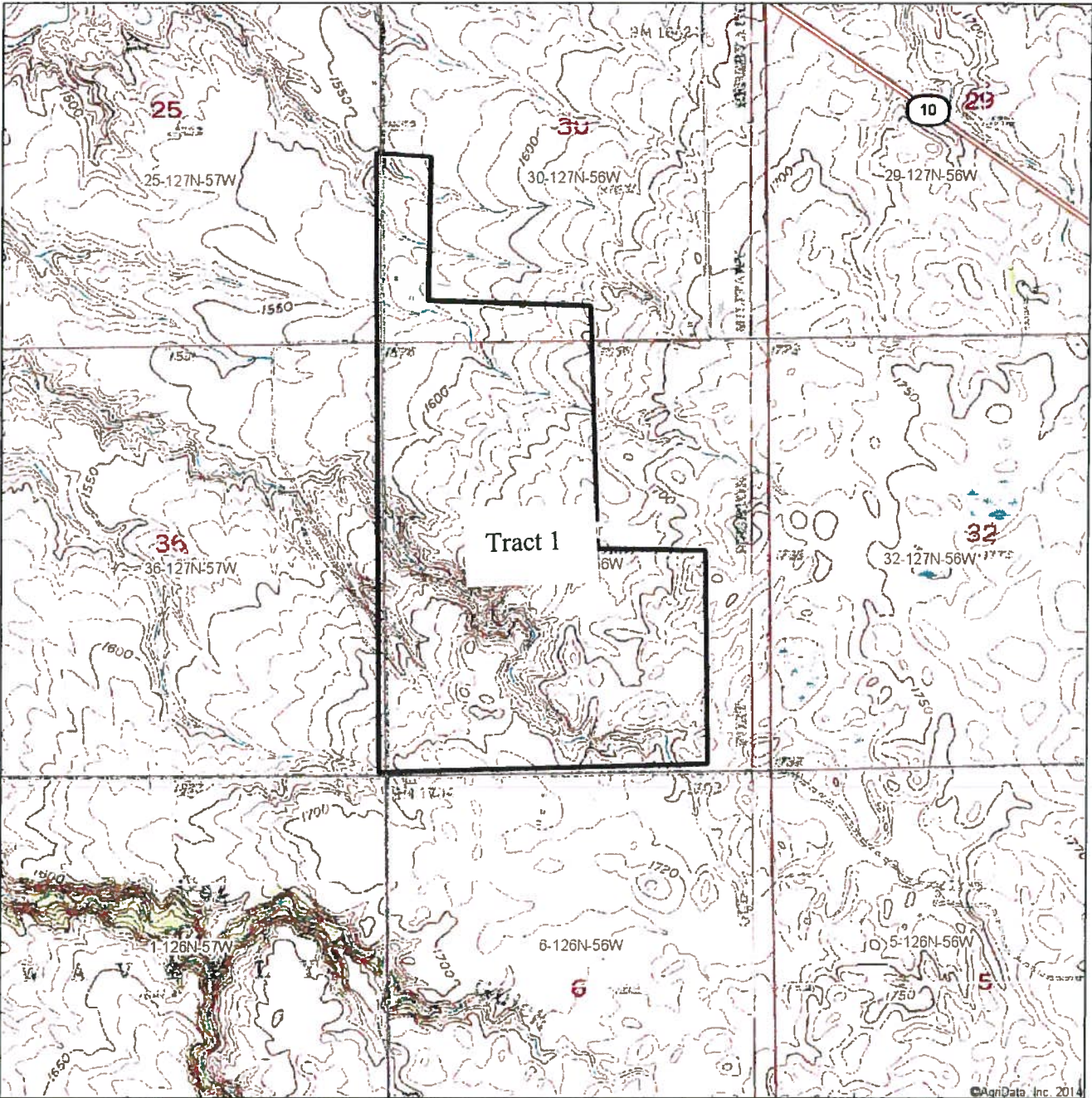
Area Symbol: SD091, Soil Area Version: 14

Code	Soil Description	Acres	Percent of field	Non-Irr Class	Productivity Index	Corn	Soybeans
FrB	Forman-Aastad loams, 2 to 6 percent slopes	106.48	23.1%	Ile	81	67	26
BkF	Buse-Forman loams, 21 to 40 percent slopes	89.01	19.3%	Vlle	19	5	2
FrD	Forman-Aastad loams, 9 to 15 percent slopes	74.88	16.2%	IIle	53	49	19
FrC	Forman-Aastad loams, 6 to 9 percent slopes	59.80	13.0%	IIIle	67	58	22
BkE	Buse-Forman loams, 9 to 21 percent slopes	55.34	12.0%	Vle	26	17	6
G897D	Forman-Buse-Lowe, occasionally flooded loams, 0 to 15 percent slopes	29.70	6.4%	Vw	53		
G790A	Kranzburg-Brookings silt loams, 0 to 2 percent slopes	19.63	4.3%	IIc	92		
KnB	Kranzburg silt loam, 2 to 6 percent slopes	10.76	2.3%	Ile	86	76	29
G193C	Forman-Buse-Langhei loams, 6 to 9 percent slopes	6.48	1.4%	IVe	53		
W	Water	4.85	1.1%		0		
RfB	Renshaw-Fordville loams, 3 to 6 percent slopes	3.74	0.8%	IIIle	40	25	10
G193B	Forman-Aastad loams, 3 to 6 percent slopes	0.54	0.1%	Ile	86		
<b>Weighted Average</b>					<b>53.3</b>	<b>35.9</b>	<b>13.8</b>

Field borders provided by Farm Service Agency as of 5/21/2008. Aerial photography provided by Aerial Photography Field Office.



# Topography Map



map center: 45° 46' 8.16, 97° 35' 54.05  
 scale: 22102

**31-127N-56W**  
**Marshall County**  
**South Dakota**

Maps Provided By:  
  
 © AgriData, Inc. 2014 www.AgriDataInc.com

N  
 W E  
 S  
 10/28/2014

Field borders provided by Farm Service Agency as of 5/21/2008. Aerial photography provided by Aerial Photography Field Office.