

Marshall County, SD

County Seat Britton, SD

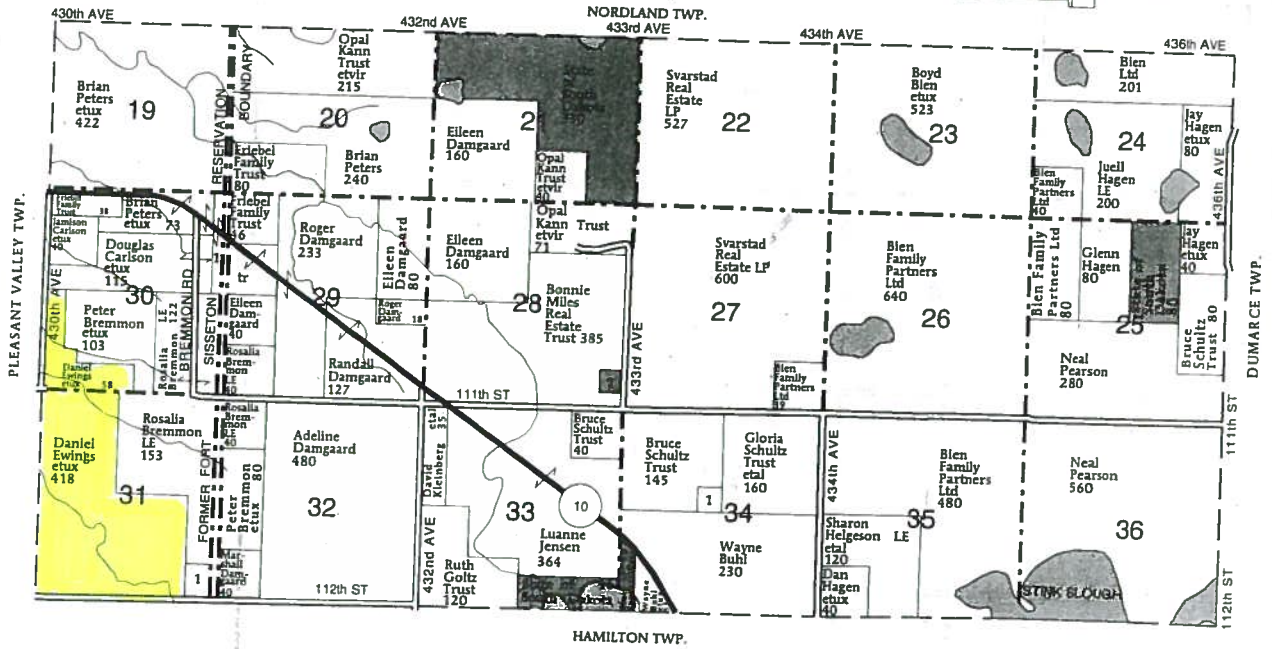
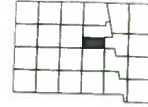
	R-59-W	R-58-W	R-57-W	R-56-W	R-54-W	R-53-W
T-128-N	Dayton Pages 16-17	Newark Pages 38-39	White Pages 62-63	Victor Pages 56-57	La Belle Pages 28-29	Veblen Pages 54-55
T-127-N	Stena Pages 52-53	Miller Pages 36-37	Pleasant Valley Pages 46-47	Nordland Pages 44-45 Wisner Pages 64-65	Dumasce Pages 18-19	McKinley Pages 34-35
T-126-N	Weston Pages 60-61	Lowell Pages 32-33	Waverly Pages 58-59	Hamilton Pages 24-25	Lake Pages 30-31	Red Iron Lake Pages 48-49
T-125-N	Newport Pages 42-43	Hickman Pages 26-27	Sisseton Pages 50-51	Fort Pages 22-23	Eden Pages 20-21	Buffalo Pages 14-15
	R-59-W	R-58-W	R-57-W	R-56-W	R-55-W	R-53-W

T-127-N

WISMER PLAT

(Landowners)

R-56-W



WISMER TOWNSHIP

- SECTION 28
- 1. County of Marshall 9
- SECTION 30
- 1. Friebel Family Trust 10
- SECTION 31
- 1. Damgaard, Marshall 7
- SECTION 34
- 1. Wismer, Holly 15

© Farm & Home Publishers, Ltd.

MARSHALL CO., SD