

United States Department of Agriculture
Farm Service Agency

April 28, 2011

PLSS: 13_124N_53W
Farm: 809

Day County

1:8,668



Wetland Determination Identifiers

- Restricted Use
- ▲ Limited Restrictions
- Exempt from Conservation Compliance Provisions

□ Common Land Units

▨ Non Cropland

Disclaimer: Wetland identifiers do not represent the size, shape or specific determination of the area. Refer to your original determination (CPA-026 and attached maps) for exact wetland boundaries and determinations, or contact NRCS.

2010 Ortho-Photography - Not to Scale

Tract Number: 1676 Description: M19 SE; SENE 13 124 53

FAV/WR
History

BIA Range Unit Number:

N

HEL Status: HEL: conservation system is being actively applied

Wetland Status: Tract contains a wetland or farmed wetland

WL Violations: None

Farmland	Cropland	DCP Cropland	WBP	WRP/EWP	CRP Cropland	GRP
187.4	134.9	134.9	0.0	0.0	0.0	0.0
State Conservation	Other Conservation	Effective DCP Cropland	Double Cropped	MPL/FWP		
0.0	0.0	134.9	0.0	0.0		

Crop	Base Acreage	Direct Yield	CC Yield	CCC-505 CRP Reduction
WHEAT	19.7	20	20	0.0
CORN	12.0	47	47	0.0
SOYBEANS	7.4	30	30	0.0
BARLEY	21.2	38	38	0.0
Total Base Acres:	60.3			

Owners: WAYNE A OPITZ

Other Producers: None

Aerial Map



map center: 45° 31' 19.7, 97° 14' 14.3
scale: 10080

13-124N-53W
Day County
South Dakota



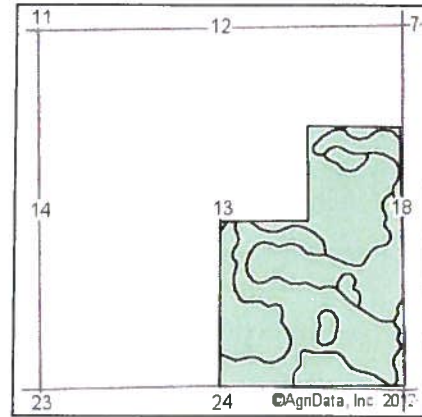
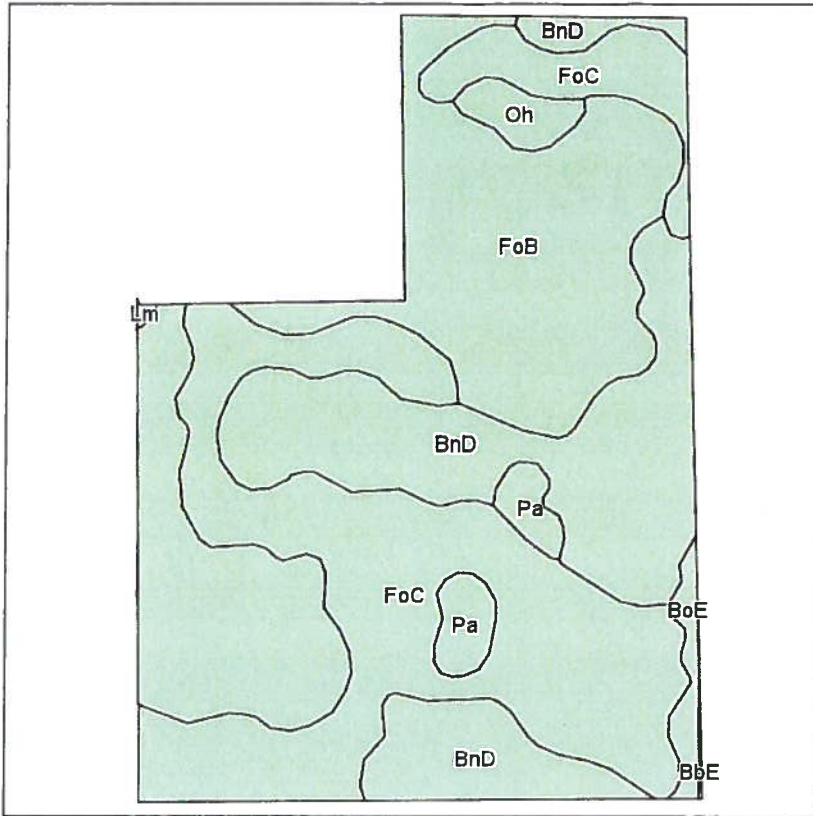
11/16/2012

Maps provided by:

CUSTOMIZED ONLINE MAPPING
©AgriData, Inc. 2012
www.AgriDataInc.com

Field borders provided by Farm Service Agency as of 5/21/2008. Aerial photography provided by Aerial Photography Field Office.

Soils Map

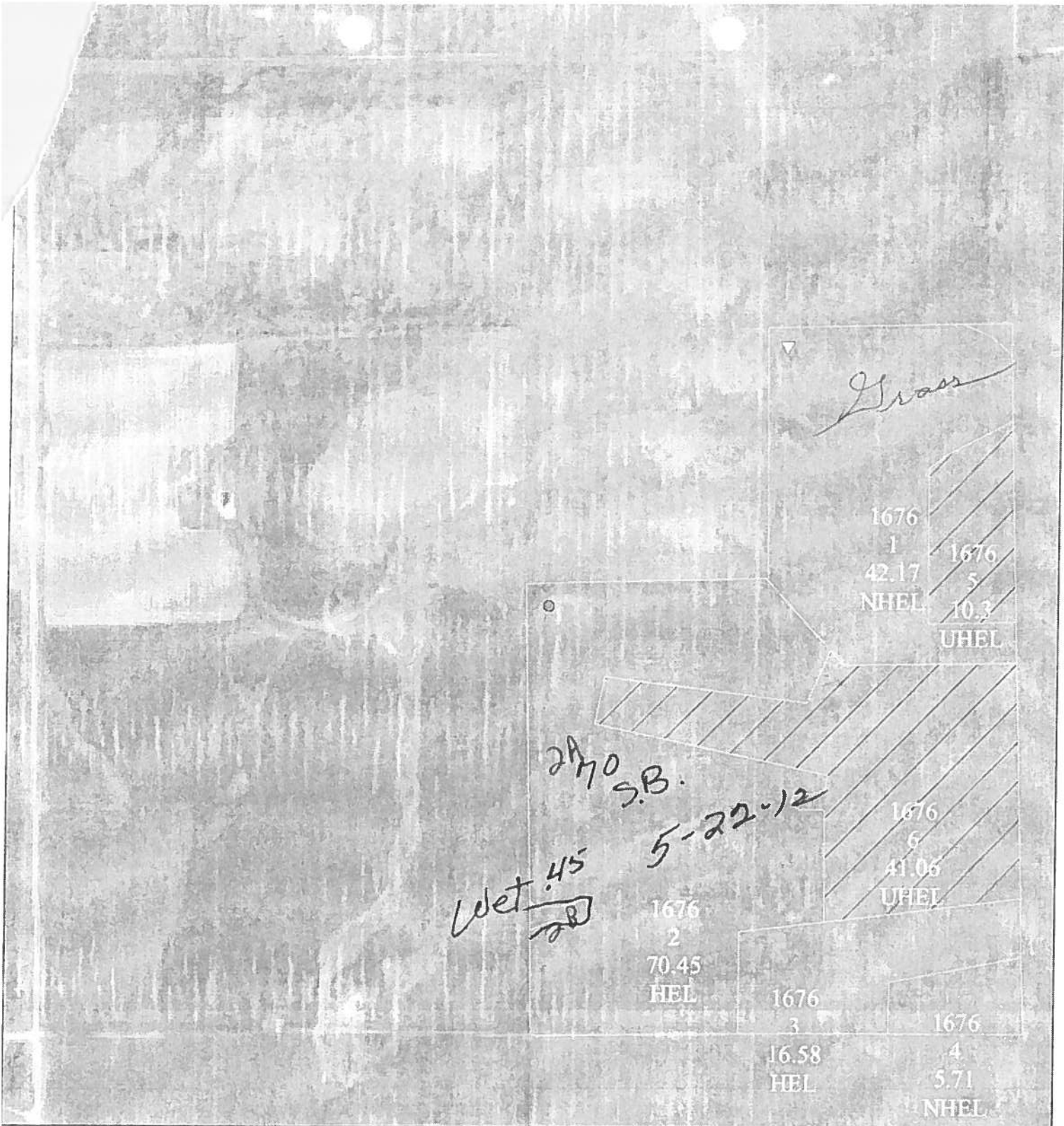


State: **South Dakota**
 County: **Day**
 Location: **13-124N-53W**
 Township: **Kosciusko**
 Acres: **189.5**
 Date: **11/16/2012**

Field borders provided by Farm Service Agency as of 5/21/2008.
 Soils data provided by USDA and NRCS.



Code	Soil Description	Acres	Percent of field	Non-Irr Class	Productivity Index	Corn	Soybeans	
FoC	Forman-Buse-Aastad loams, 2 to 9 percent slopes	67.4	35.6%	IIIe	65	54	20	
FoB	Forman-Buse-Aastad loams, 1 to 6 percent slopes	64.7	34.2%	Ile	79	64	23	
BnD	Buse-Barnes loams, 9 to 20 percent slopes	46.6	24.6%	Ve	34	33	12	
Pa	Parnell silty clay loam	4.8	2.5%	Vw	34	25	9	
Oh	Oldham silty clay loam	3	1.6%	Vw	30	25	8	
BoE	Buse-Barnes loams, 9 to 40 percent slopes, very stony	2.6	1.4%	VIIIs	6			
Lm	Lamoure silty clay loam	0.2	0.1%	IIIw	68	64	20	
BbE	Barnes-Buse stony complex, 9 to 40 percent slopes	0.2	0.1%	VIIIs	24	17	6	
Weighted Average						60	50.3	18.3



United States Department of Agriculture
Farm Service Agency

April 28, 2011

PLSS: 13_124N_53W
Farm: 809

Day County

1:8,668



Wetland Determination identifiers

- ⊙ Restricted Use
- Limited Restrictions
- Exempt from Conservation Compliance Provisions

Common Land Units

//// Non Cropland

Disclaimer: Wetland identifiers do not represent the size, shape or specific determination of the area. Refer to your original determination (CPA-026 and attached maps) for exact wetland boundaries and determinations, or contact NRCS.

2010 Ortho-Photography - Not to Scale

**HIGHLY ERODIBLE LAND AND WETLAND
CONSERVATION DETERMINATION**

Wayne Opitz
RR 1 Box 81
Roslyn, SD 57261

April 18, 1991

Day

4. Name of USDA Agency or Person Requesting Determination

ASCS

5. Farm No. and Tract No.

#809 T1676,1677,1678,1679

SECTION I - HIGHLY ERODIBLE LAND

6. Is soil survey now available for making a highly erodible land determination?	Yes	No	Field No.(s)	Total Acres
7. Are there highly erodible soil map units on this farm?				
8. List highly erodible fields that, according to ASCS records, were used to produce an agricultural commodity in any crop year during 1981-1985.				
9. List highly erodible fields that have been or will be converted for the production of agricultural commodities and, according to ASCS records, were not used for this purpose in any crop year during 1981-1985; and were not enrolled in a USDA set-aside or diversion program.				

10. This Highly Erodible Land determination was completed in the : Office Field

NOTE: If you have highly erodible cropland fields, you may need to have a conservation plan developed for these fields. For further information, contact the local office of the Soil Conservation Service.

SECTION II - WETLAND

11. Are there hydric soils on this farm?	Yes	No	Field No.(s)	Total Wetland Acres
	X			
List field number and acres, where appropriate, for the following:				
12. Wetlands (W), including abandoned wetlands, or Farmed Wetlands (FW). Wetlands may be farmed under natural conditions. Farmed Wetlands may be farmed and maintained in the same manner as they were prior to December 23, 1985, as long as they are not abandoned.			see continuation form	Approximately 93,5 acres
13. Prior Converted Wetlands (PC) - The use, management, drainage, and alteration of prior converted wetlands (PC) are not subject to FSA unless the area reverts to wetland as a result of abandonment. You should inform SCS of any area to be used to produce an agricultural commodity that has not been cropped, managed, or maintained for 5 years or more.				
14. Artificial Wetlands (AW) - Artificial Wetlands includes Irrigation Induced wetlands. These Wetlands are not subject to FSA.				
15. Minimal Effect Wetlands (MW) - These wetlands are to be farmed according to the minimal effect agreement signed at the time the minimal effect determination was made.				
16. Converted Wetlands (CW) - In any year that an agricultural commodity is planted on these Converted Wetlands, you will be ineligible for USDA benefits. If you believe that the conversion was commenced before December 23, 1985, or that the conversion was caused by a third party, contact the ASCS office to request a commenced or third party determination.				

17. The planned alteration measures on wetlands in fields _____ are considered maintenance and are in compliance with FSA.

18. The planned alteration measures on wetlands in fields _____ are not considered to be maintenance and if installed will cause the area to become a Converted Wetland (CW). See item 16 for information on CW.

19. This wetland determination was completed in the : Office Field

20. This determination was: Delivered Mailed To the Person on Date: April 18, 1991

NOTE: If you do not agree with this determination, you may request a reconsideration from the person that signed this form in Block 22 below. The reconsideration is a prerequisite for any further appeal. The request for the reconsideration must be in writing and must state your reasons for the request. The request must be mailed or delivered within 15 days after this determination is mailed to or otherwise made available to you. Please see reverse side of the producer's copy of this form for more information on appeals procedure.

NOTE: If you intend to convert additional land to cropland or alter any wetlands, you must initiate another Form AD-1026 at the local office of ASCS. Abandonment is where land has not been cropped, managed, or maintained for 5 years or more. You should inform SCS if you plan to produce an agricultural commodity on abandoned wetlands.

21. Remarks

FINAL WETLAND DETERMINATION
See continuation form for tract and field numbers.

22. Signature of SCS District Conservationist

Thomas J. Quinn/KL

23. Date

April 18, 1991