



United States Department of Agriculture  
Farm Service Agency

October 31, 2011

PLSS: 18\_120N\_55W  
Farm: 1352

**Day County**  
1:8,672



**Wetland Determination Identifiers**

- Restricted Use
- ▲ Limited Restrictions
- Exempt from Conservation Compliance Provisions

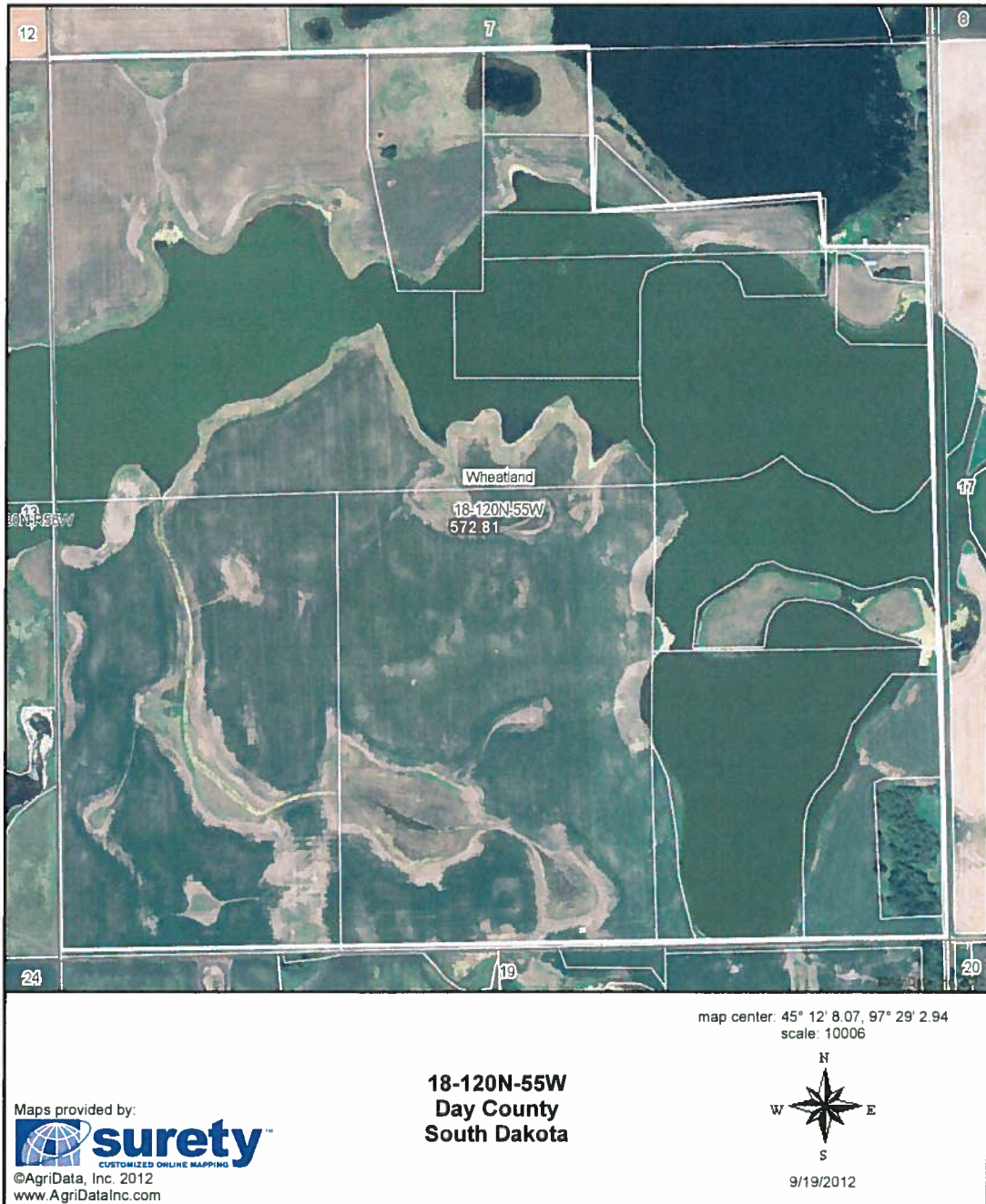
□ Common Land Units

▨ Non Cropland

Disclaimer: Wetland identifiers do not represent the size, shape or specific determination of the area. Refer to your original determination (CPA-026 and attached maps) for exact wetland boundaries and determinations, or contact NRCS.

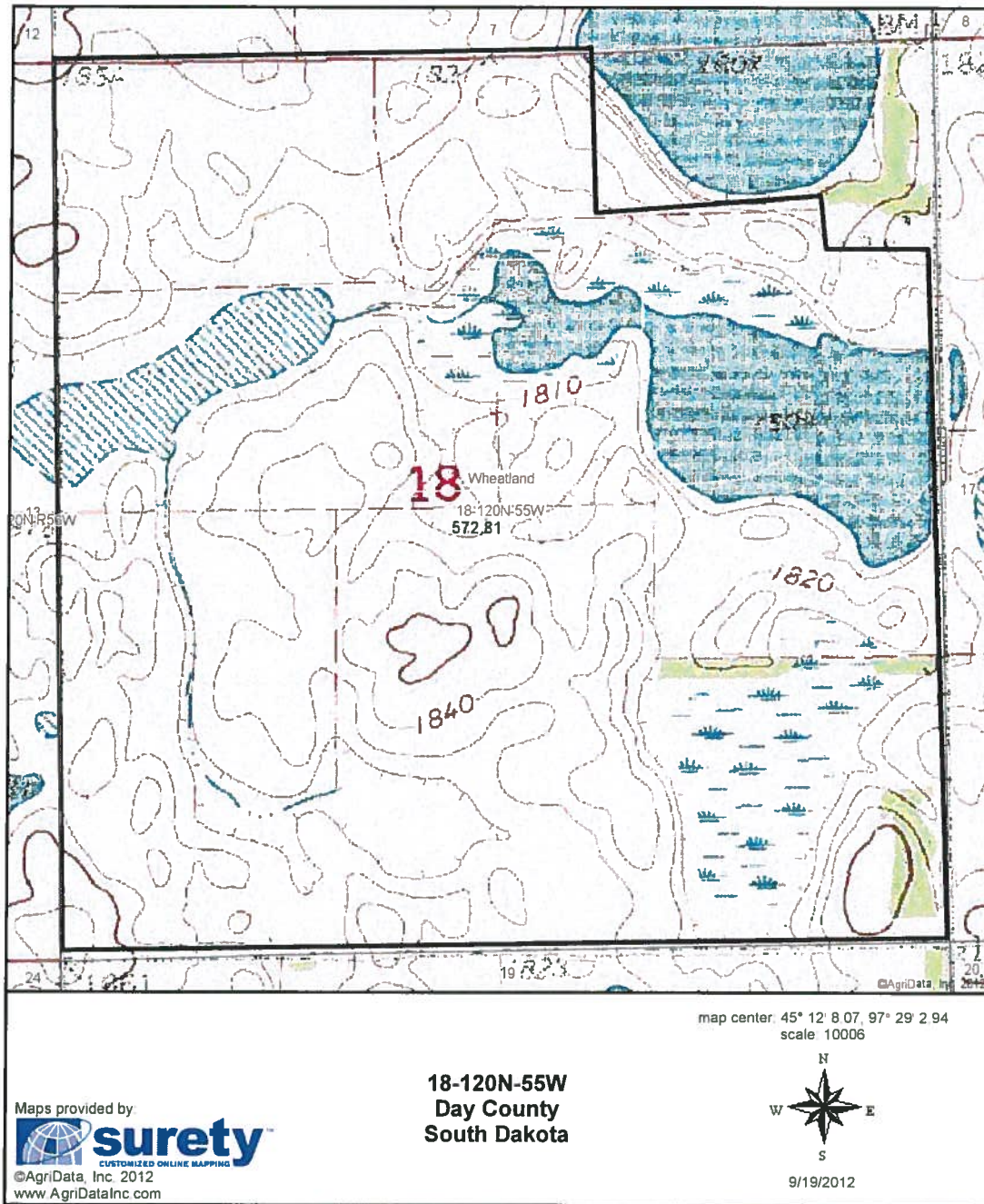
2008 Ortho-Photography - Not to Scale

### Aerial Map



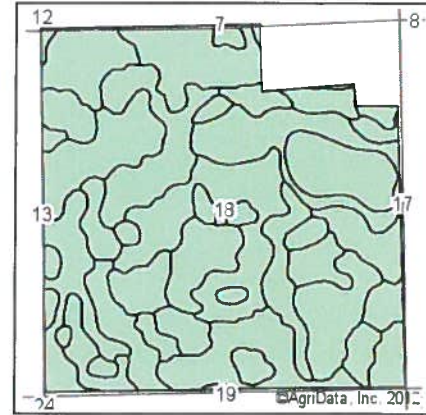
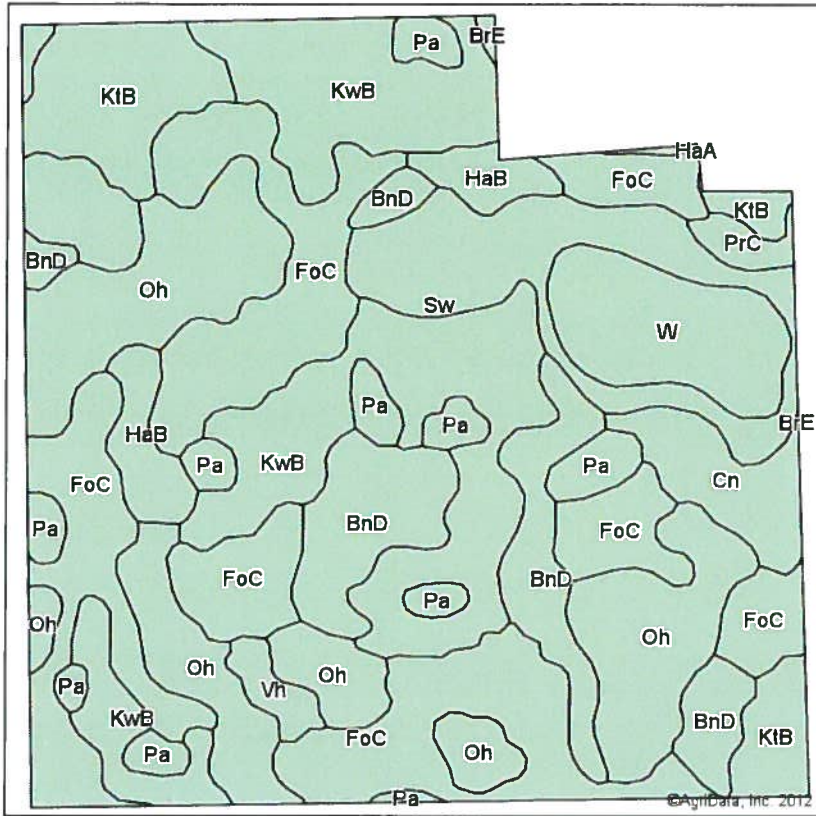
Field borders provided by Farm Service Agency as of 5/21/2008. Aerial photography provided by Aerial Photography Field Office.

### Topography Map



Field borders provided by Farm Service Agency as of 5/21/2008. Aerial photography provided by Aerial Photography Field Office.

### Soils Map



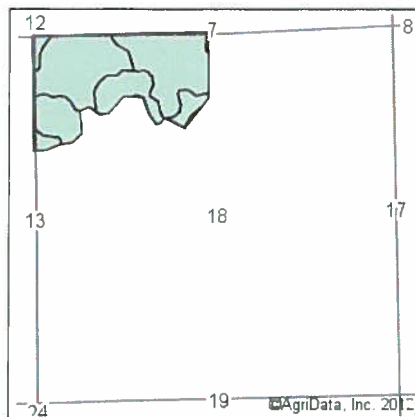
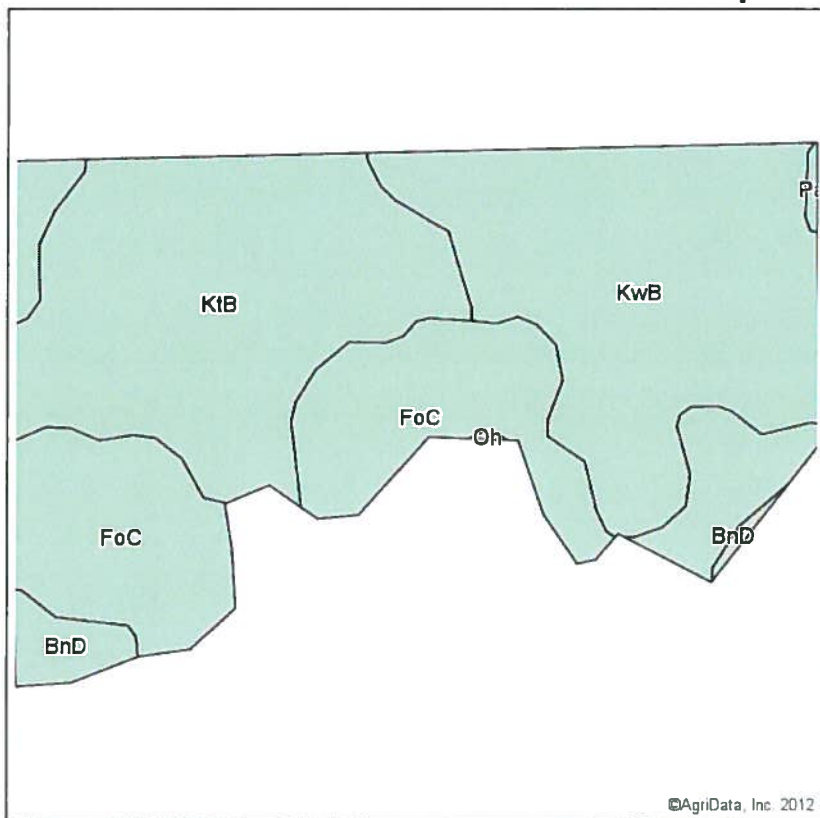
State: **South Dakota**  
 County: **Day**  
 Location: **18-120N-55W**  
 Township: **Wheatland**  
 Acres: **572.8**  
 Date: **9/19/2012**

Field borders provided by Farm Service Agency as of 5/21/2008.  
 Soils data provided by USDA and NRCS.



Code	Soil Description	Acres	Percent of field	Non-Irr Class	Productivity Index	Corn	Soybeans
FoC	Forman-Buse-Aastad loams, 2 to 9 percent slopes	153.2	26.8%	IIIe	65	54	20
KwB	Kranzburg-Buse-Waubay complex, 1 to 6 percent slopes	104.1	18.2%	Ile	83		
Oh	Oldham silty clay loam	94.5	16.5%	Vw	30	25	8
BnD	Buse-Barnes loams, 9 to 20 percent slopes	51.1	8.9%	Ve	34	33	12
Sw	Southam silty clay loam	40	7.0%	VIIIw	10	4	1
KtB	Kranzburg-Forman complex, 2 to 6 percent slopes	36.3	6.3%	Ile	83	68	26
W	Water	28.1	4.9%		0		
Pa	Parnell silty clay loam	23.9	4.2%	Vw	34	25	9
Cn	Colvin silty clay loam	15.9	2.8%	IVw	55	47	15
HaB	Hamerly loam, 2 to 6 percent slopes	15.6	2.7%	IIs	65	60	19
Vh	Vallers-Hamerly loams	4.9	0.9%	IIIs	57	50	16
PrC	Poinsett-Rusklyn silty clay loams, 6 to 9 percent slopes	4	0.7%	IIIe	68	57	21
BrE	Buse-Langhei complex, 15 to 40 percent slopes	1.2	0.2%	VIIe	18	11	4
<b>Weighted Average</b>					<b>52.2</b>	<b>31</b>	<b>11.1</b>

### Soils Map



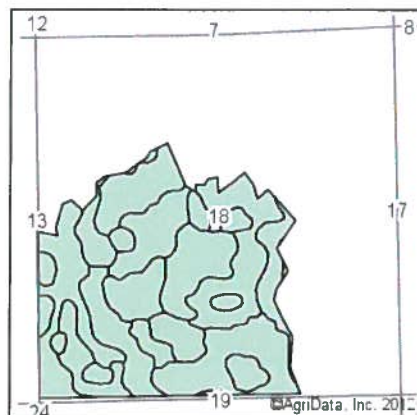
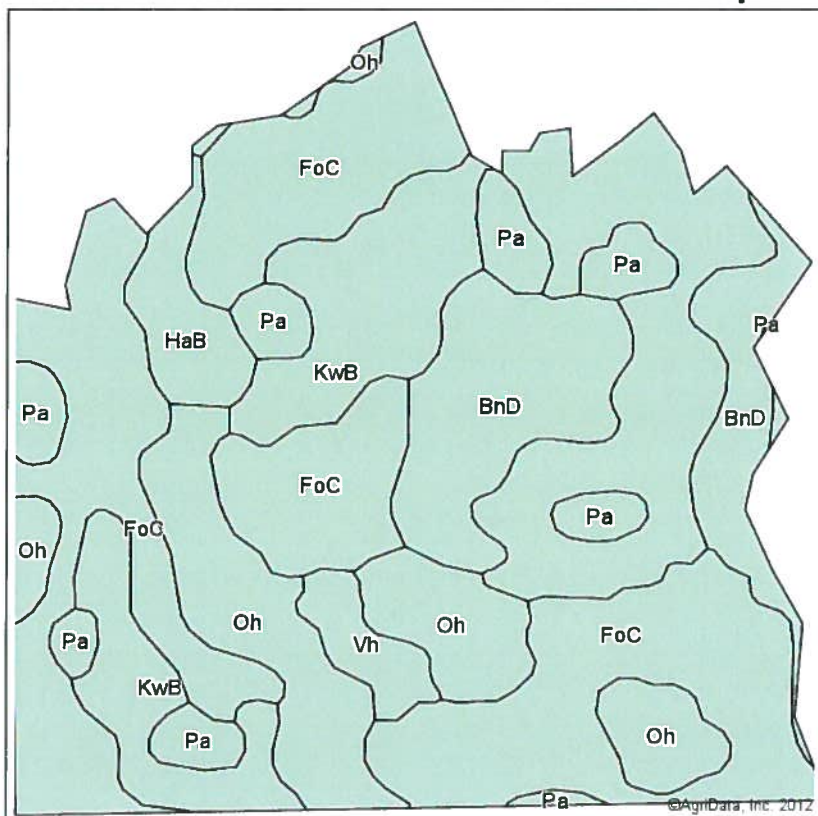
State: **South Dakota**  
 County: **Day**  
 Location: **18-120N-55W**  
 Township: **Wheatland**  
 Acres: **72**  
 Date: **8/27/2012**

Field borders provided by Farm Service Agency as of 5/21/2008.  
 Soils data provided by USDA and NRCS.



Code	Soil Description	Acres	Percent of field	Non-Irr Class	Productivity Index	Corn	Soybeans
KtB	Kranzburg-Forman complex, 2 to 6 percent slopes	23.7	32.9%	Ile	83	68	26
KwB	Kranzburg-Buse-Waubay complex, 1 to 6 percent slopes	23.5	32.6%	Ile	83		
FoC	Forman-Buse-Aastad loams, 2 to 9 percent slopes	22.7	31.5%	IIle	65	54	20
BnD	Buse-Barnes loams, 9 to 20 percent slopes	1.9	2.6%	Ve	34	33	12
Pa	Parnell silty clay loam	0.2	0.3%	Vw	34	25	9
<b>Weighted Average</b>					<b>75.8</b>	<b>40.3</b>	<b>15.2</b>

### Soils Map



State: **South Dakota**  
 County: **Day**  
 Location: **18-120N-55W**  
 Township: **Wheatland**  
 Acres: **248.1**  
 Date: **8/27/2012**

Field borders provided by Farm Service Agency as of 5/21/2008.  
 Soils data provided by USDA and NRCS.



Code	Soil Description	Acres	Percent of field	Non-Irr Class	Productivity Index	Corn	Soybeans
FoC	Forman-Buse-Aastad loams, 2 to 9 percent slopes	91.6	36.9%	IIIe	65	54	20
KwB	Kranzburg-Buse-Waubay complex, 1 to 6 percent slopes	61.8	24.9%	Ile	83		
Oh	Oldham silty clay loam	34.7	14.0%	Vw	30	25	8
BnD	Buse-Barnes loams, 9 to 20 percent slopes	31.2	12.6%	Ve	34	33	12
Pa	Parnell silty clay loam	16.4	6.6%	Vw	34	25	9
HaB	Hamerly loam, 2 to 6 percent slopes	7.5	3.0%	IIIs	65	60	19
Vh	Vallers-Hamerly loams	4.9	2.0%	IIIs	57	50	16
<b>Weighted Average</b>					<b>58.5</b>	<b>32</b>	<b>11.5</b>

Wh ↑

# NOT TO SCALE

